



Tel.	+370 706 94 613	VĮ „ORO NAVIGACIJA“	AIP SUP: 001/2023
AFS:	EYVNYOYX	Oro navigacijos informacijos skyrius	Galioja nuo: 23-Mar-2023
URL:	www.ans.lt	Balio Karvelio g. 25	iki:
El.p.	ais@ans.lt	02184 Vilnius, Lietuva	Paskelbtas: 10-Nov-2022

S 001. NAUJI SKRYDŽIŲ PAGAL PRIETAISUS ŽEMĖLAPIAI SRAIGTASPARNIAMS PALUKNIO/AV AERODROME

Šiame AIP papildyme pateikiami patvirtinti nauji Standartinio išskridimo pagal prietaisus (SID) žemėlapis RWY 32 ir Artėjimo tūpti pagal prietaisus žemėlapis RNP (LNAV only) RWY 14, kurie yra skirti sraigtasparnių skrydžiams Paluknio/AV aerodrome (EYPH) ir įsigalioja nuo 2023 m. kovo 23 d.

Žemėlapiai ir susiję navigaciniai duomenys:

- 1 Priedas. Standartinio išskridimo pagal prietaisus (SID) žemėlapis - Instrument (SID) RWY 32 BILDI 1A.
- 2 Priedas. Artėjimo tūpti pagal prietaisus žemėlapis - RNP (LNAV only) RWY 14 (CAT H).

-PABAIGA-

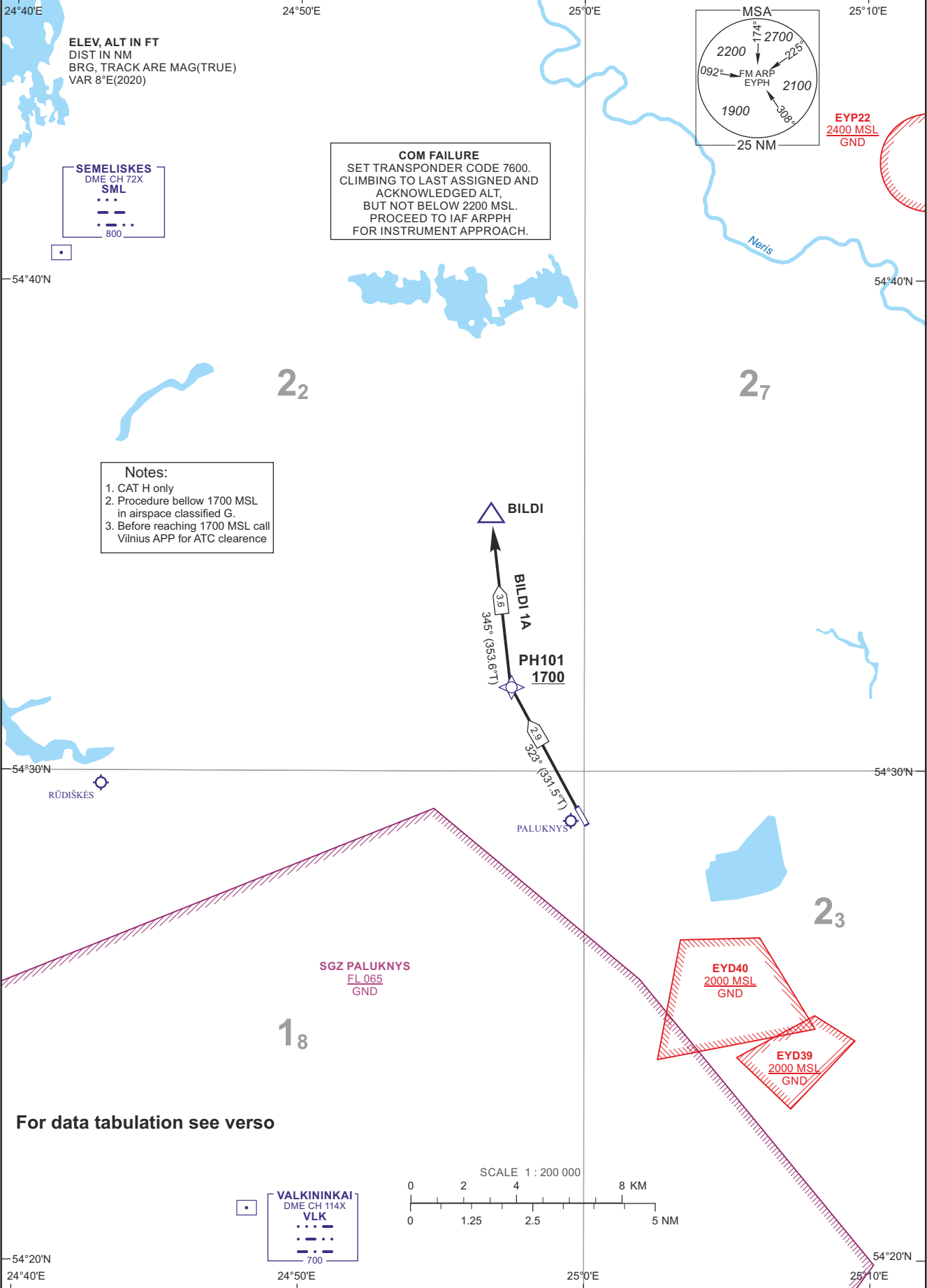
SPECIALUSIS TUŠČIAS PUSLAPIS

RNP 1
STANDARD DEPARTURE CHART
INSTRUMENT (SID) - ICAO

PALUKNYS RADIO 119.100
VILNIUS APP 120.705
VILNIUS ATIS 125.805

TRANSITION ALT 5000

PALUKNYS/AV
RWY 32
BILDI 1A



PALUKNYS/AV
RNP 1 SID
RWY 32

TABULAR DESCRIPTION

BILDI 1A PDG 7.0% REQUIRED DUE TO OPERATIONAL REASONS UNTIL PH101

<i>Serial Number</i>	<i>Path Descriptor</i>	<i>Waypoint Identifier</i>	<i>Fly-over</i>	<i>Course/Track °M(°T)</i>	<i>Magnetic Variation</i>	<i>Distance (NM)</i>	<i>Turn Direction</i>	<i>Altitude (FT)/ Flight level</i>	<i>Speed (KT)</i>	<i>Navigation Specification</i>
001	CF	PH101	—	323(331.5)	8.3	2.9	—	+1700	—	RNP1
002	TF	BILDI	—	345(353.6)	8.3	3.6	—	—	—	RNP1

WAYPOINT COORDINATES

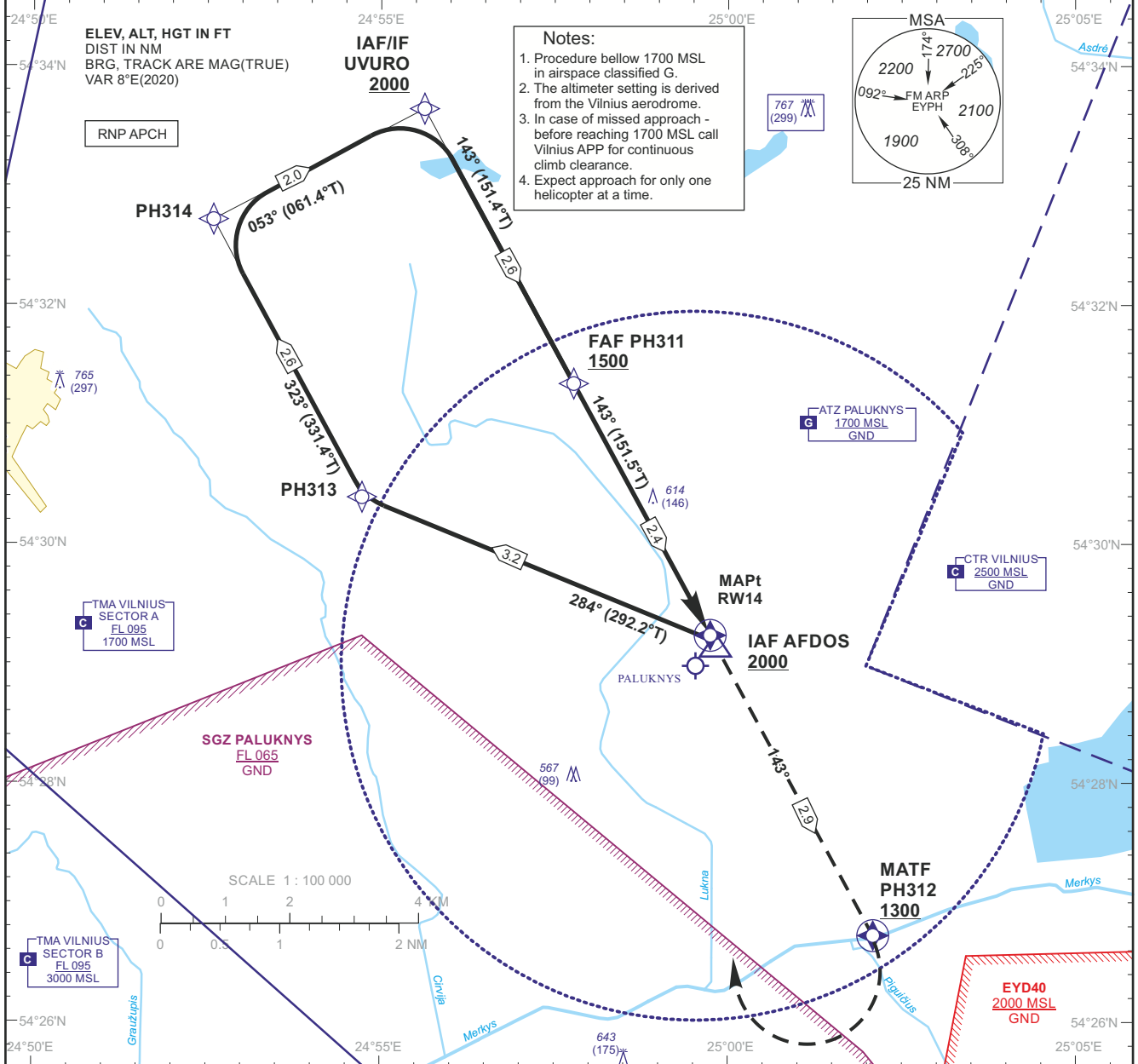
FIX/POINTS	COORDINATES
PH101	54 31 44.8N 024 57 24.0E
BILDI	54 35 16.4N 024 56 43.1E

**INSTRUMENT
APPROACH
CHART - ICAO**

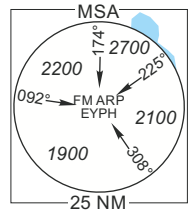
AERODROME ELEV 468
HEIGHTS RELATED TO AD ELEV
THR RWY 14 - ELEV 467

VILNIUS APP 120.705
PALUKNYS RADIO 119.100
VILNIUS ATIS 125.805

**PALUKNYS/AV
RNP (LNAV only)
RWY 14 (CAT H)**

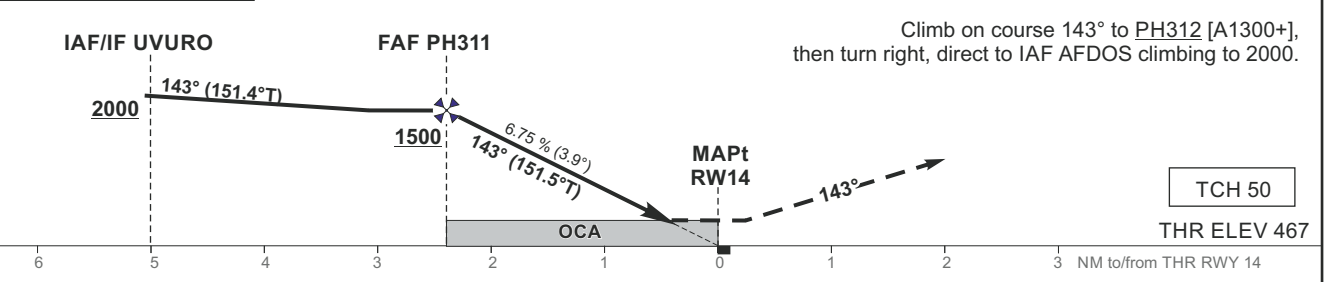


- Notes:**
1. Procedure below 1700 MSL in airspace classified G.
 2. The altimeter setting is derived from the Vilnius aerodrome.
 3. In case of missed approach - before reaching 1700 MSL call Vilnius APP for continuous climb clearance.
 4. Expect approach for only one helicopter at a time.



TRANSITION ALT 5000

MISSED APPROACH



OCA(OCH)		H	Timing not authorized for defining the MAPt					
STRAIGHT-IN APPROACH	LNAV	940 (470)	GS	Kts	60	70	80	90
			FAF-MAPt 2.4 NM	min:sec	2:24	2:03	1:48	1:36
			Rate of descent (6.75%)	ft/min	413	482	551	620
For data tabulation see verso								

**INSTRUMENT
APPROACH
CHART - ICAO**

AERODROME ELEV 468
HEIGHTS RELATED TO AD ELEV
THR RWY 14 - ELEV 467

VILNIUS APP 120.705
PALUKNYS RADIO 119.100
VILNIUS ATIS 125.805

**PALUKNYS/AV
RNP (LNAV only)
RWY 14 (CAT H)**

TABULAR DESCRIPTION

IAF AFDOS											
Serial Number	Path Descriptor	Waypoint Identifier	Fly-over	Course/Track °M(°T)	Magnetic Variation	Distance (NM)/ Time	Turn Direction	Altitude (FT)/ Flight level	Speed (KT)	VPA/TCH	Navigation Specification
001	IF	AFDOS	—	—	8.3	—	—	+2000	—	—	RNP APCH
002	TF	PH313	—	284(292.2)	8.3	3.2	—	—	—	—	RNP APCH
003	TF	PH314	—	323(331.4)	8.3	2.6	—	—	—	—	RNP APCH
004	TF	UVURO	—	053(061.4)	8.3	2.0	—	+2000	—	—	RNP APCH
005	TF	PH311	—	143(151.4)	8.3	2.6	—	+1500	—	—	RNP APCH
006	TF	RW14	Y	143(151.5)	8.3	2.4	—	@940	—	-3.86/50	RNP APCH
007	CF	PH312	Y	143(151.5)	8.3	2.9	—	+1300	—	—	RNP APCH
008	DF	AFDOS	—	—	8.3	—	L	+2000	—	—	RNP APCH
IAF UVURO											
001	IF	UVURO	—	—	8.3	—	—	+2000	—	—	RNP APCH
002	TF	PH311	—	143(151.4)	8.3	2.6	—	+1500	—	—	RNP APCH
003	TF	RW14	Y	143(151.5)	8.3	2.4	—	@940	—	-3.86/50	RNP APCH
004	CF	PH312	Y	143(151.5)	8.3	2.9	—	+1300	—	—	RNP APCH
005	DF	AFDOS	—	—	8.3	—	L	+2000	—	—	RNP APCH

WAYPOINT COORDINATES	
FIX/POINTS	COORDINATES
AFDOS (IAF)	54 29 11.6N 024 59 47.1E
UVURO (IAF/IF)	54 33 39.4N 024 55 36.8E
PH314	54 32 42.0N 024 52 35.8E
PH313	54 30 23.1N 024 54 45.9E
PH311 (FAF)	54 31 20.6N 024 57 46.6E
RW14 (MAPt)	54 29 14.2N 024 59 44.6E
PH312 (MATF)	54 26 44.2N 025 02 04.5E