



Phone:	+370 706 94 613	SE "ORO NAVIGACIJA"	AIP SUP: 001/2023
AFS:	EYVNYOYX	Aeronautical Information Service	Effective Date: 23-Mar-2023
URL:	www.ans.lt	Balio Karvelio Str. 25	End Date:
Email:	ais@ans.lt	LT-02184 Vilnius, Lithuania	Publication Date: 10-Nov-2022

S 001. NEW INSTRUMENT CHARTS FOR HELICOPTERS AT PALUKNYS/AV AERODROME

This AIP supplement provides information on implementation of new Standard Instrument Departure Chart RWY 32 and Instrument Approach Chart RNP (LNAV only) RWY 14 for helicopters at Paluknys/AV (EYPH) aerodrome, with effect from 23 MAR 2023.

Charts and related aeronautical data tabulations:

Appendix 1. Standard Departure Chart - Instrument (SID) RWY 32 BILDI 1A.

Appendix 2. Instrument Approach Chart - RNP (LNAV only) RWY 14 (CAT H).

-END-

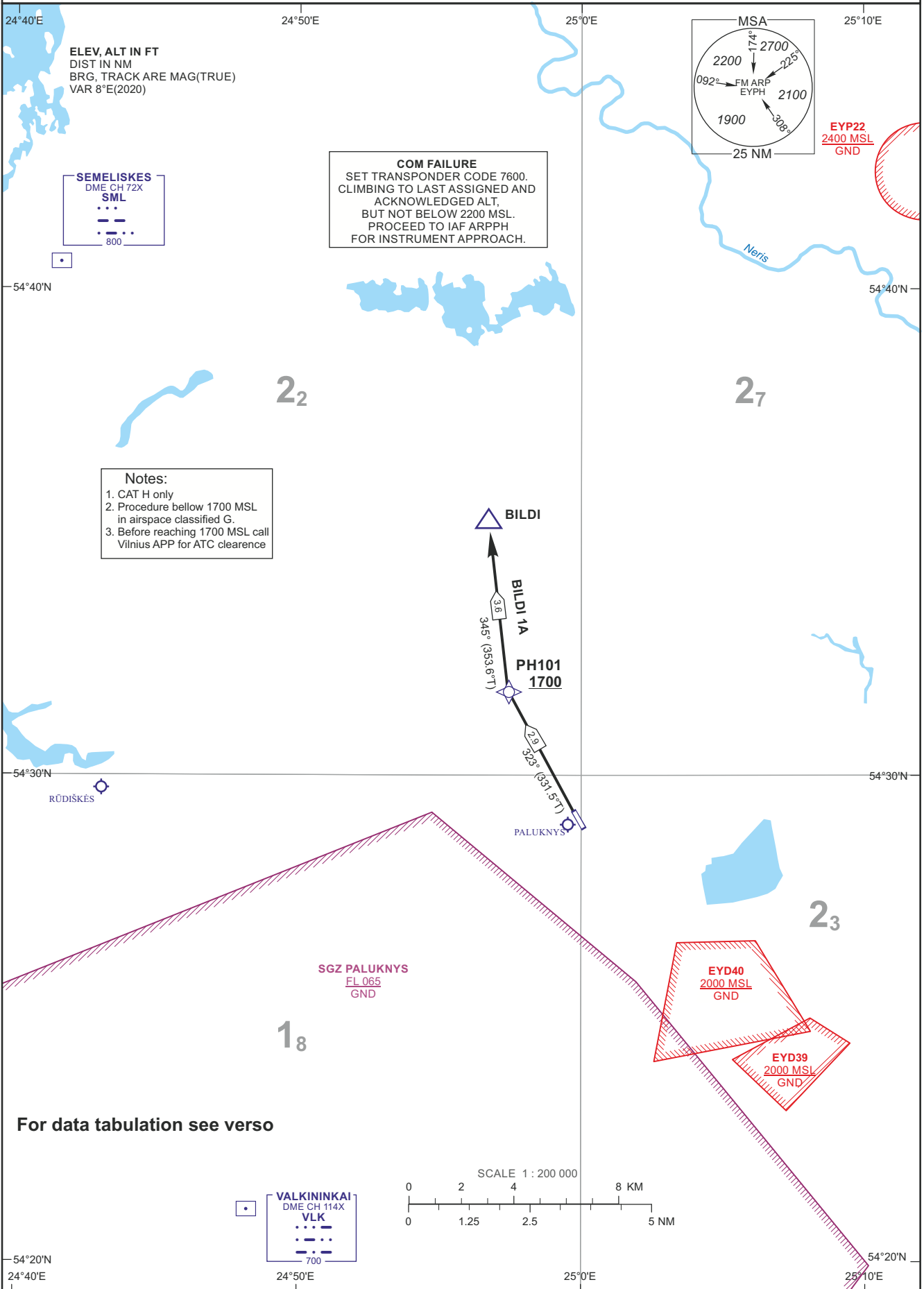
THIS PAGE INTENTIONALLY LEFT BLANK

RNP 1
STANDARD DEPARTURE CHART
INSTRUMENT (SID) - ICAO

PALUKNYS RADIO 119.100
VILNIUS APP 120.705
VILNIUS ATIS 125.805

TRANSITION ALT 5000

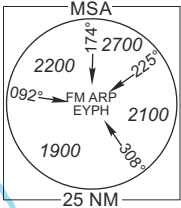
PALUKNYS/AV
RWY 32
BILD1 1A



ELEV, ALT IN FT
DIST IN NM
BRG, TRACK ARE MAG(TRUE)
VAR 8°E(2020)

SEMELISKES
DME CH 72X
SML
800

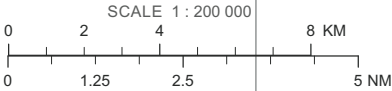
COM FAILURE
SET TRANSPONDER CODE 7600.
CLIMBING TO LAST ASSIGNED AND
ACKNOWLEDGED ALT,
BUT NOT BELOW 2200 MSL.
PROCEED TO IAF ARPPH
FOR INSTRUMENT APPROACH.



EYP22
2400 MSL
GND

Notes:
1. CAT H only
2. Procedure below 1700 MSL
in airspace classified G.
3. Before reaching 1700 MSL call
Vilnius APP for ATC clearance

For data tabulation see verso



VALKININKAI
DME CH 114X
VLK
700

**PALUKNYS/AV
RNP 1 SID
RWY 32**

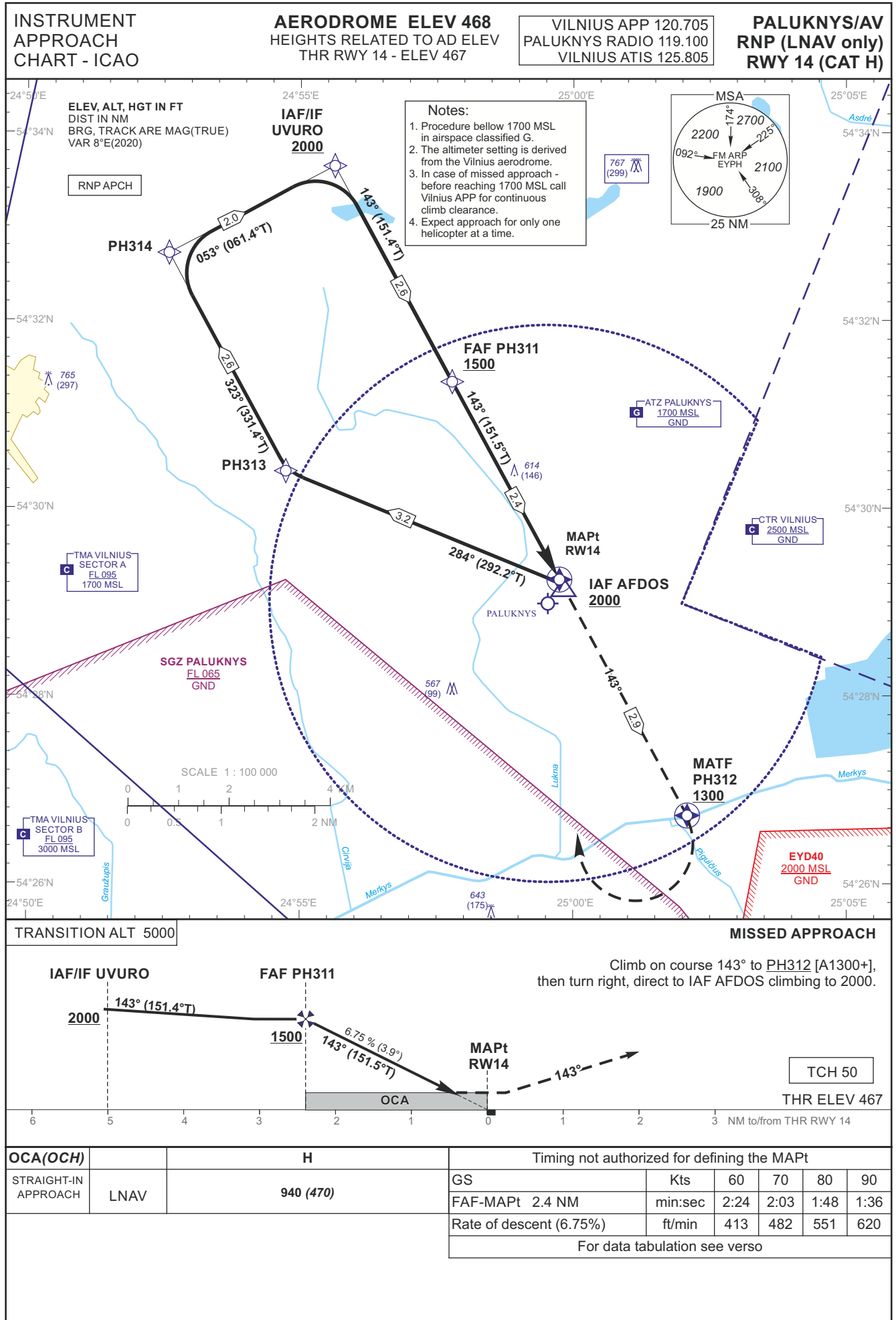
TABULAR DESCRIPTION

BILDI 1A PDG 7.0% REQUIRED DUE TO OPERATIONAL REASONS UNTIL PH101

<i>Serial Number</i>	<i>Path Descriptor</i>	<i>Waypoint Identifier</i>	<i>Fly-over</i>	<i>Course/Track °M(°T)</i>	<i>Magnetic Variation</i>	<i>Distance (NM)</i>	<i>Turn Direction</i>	<i>Altitude (FT)/ Flight level</i>	<i>Speed (KT)</i>	<i>Navigation Specification</i>
001	CF	PH101	—	323(331.5)	8.3	2.9	—	+1700	—	RNP1
002	TF	BILDI	—	345(353.6)	8.3	3.6	—	—	—	RNP1

WAYPOINT COORDINATES

FIX/POINTS	COORDINATES
PH101	54 31 44.8N 024 57 24.0E
BILDI	54 35 16.4N 024 56 43.1E



INSTRUMENT
APPROACH
CHART - ICAO

AERODROME ELEV 468
HEIGHTS RELATED TO AD ELEV
THR RWY 14 - ELEV 467

VILNIUS APP 120.705
PALUKNYS RADIO 119.100
VILNIUS ATIS 125.805

PALUKNYS/AV
RNP (LNAV only)
RWY 14 (CAT H)

TABULAR DESCRIPTION

IAF AFDOS											
Serial Number	Path Descriptor	Waypoint Identifier	Fly-over	Course/Track °M(°T)	Magnetic Variation	Distance (NM)/ Time	Turn Direction	Altitude (FT)/ Flight level	Speed (KT)	VPA/TCH	Navigation Specification
001	IF	AFDOS	—	—	8.3	—	—	+2000	—	—	RNP APCH
002	TF	PH313	—	284(292.2)	8.3	3.2	—	—	—	—	RNP APCH
003	TF	PH314	—	323(331.4)	8.3	2.6	—	—	—	—	RNP APCH
004	TF	UVURO	—	053(061.4)	8.3	2.0	—	+2000	—	—	RNP APCH
005	TF	PH311	—	143(151.4)	8.3	2.6	—	+1500	—	—	RNP APCH
006	TF	RW14	Y	143(151.5)	8.3	2.4	—	@940	—	-3.86/50	RNP APCH
007	CF	PH312	Y	143(151.5)	8.3	2.9	—	+1300	—	—	RNP APCH
008	DF	AFDOS	—	—	8.3	—	L	+2000	—	—	RNP APCH
IAF UVURO											
001	IF	UVURO	—	—	8.3	—	—	+2000	—	—	RNP APCH
002	TF	PH311	—	143(151.4)	8.3	2.6	—	+1500	—	—	RNP APCH
003	TF	RW14	Y	143(151.5)	8.3	2.4	—	@940	—	-3.86/50	RNP APCH
004	CF	PH312	Y	143(151.5)	8.3	2.9	—	+1300	—	—	RNP APCH
005	DF	AFDOS	—	—	8.3	—	L	+2000	—	—	RNP APCH

WAYPOINT COORDINATES

FIX/POINTS	COORDINATES
AFDOS (IAF)	54 29 11.6N 024 59 47.1E
UVURO (IAF/IF)	54 33 39.4N 024 55 36.8E
PH314	54 32 42.0N 024 52 35.8E
PH313	54 30 23.1N 024 54 45.9E
PH311 (FAF)	54 31 20.6N 024 57 46.6E
RW14 (MAPt)	54 29 14.2N 024 59 44.6E
PH312 (MATF)	54 26 44.2N 025 02 04.5E