



---

Phone:	+370 706 94 613	SE "ORO NAVIGACIJA"	<b>AIP SUP: 002/2021</b>
Fax:	+370 706 94 614	Aeronautical Information Service	<b>Effective Date: 17-Jun-2021</b>
AFS:	EYVNYOYX	Balio Karvelio Str. 25	<b>End Date:</b>
URL:	www.ans.lt	LT-02184 Vilnius, Lithuania	<b>Publication Date: 26-Jan-2021</b>
Email:	ais@ans.lt		

---

## S 002. KAUNAS AERODROME INSTRUMENT APPROACH CHARTS UPDATED

The following AIP subsections affected: GEN 3.2 EYKA AD 2.24

This AIP supplement provides updated information on Instrument Approach Charts for Kaunas aerodrome.

The following changes enter into force from **17 June 2021**:

1. EYKA AD 2.24-26 Instrument Approach Chart – ICAO RNAV<sub>(GNSS)</sub> RWY 08 replaced by Instrument Approach Chart – ICAO RNP RWY 08
2. EYKA AD 2.24-27 Instrument Approach Chart – ICAO RNAV<sub>(GNSS)</sub> RWY 26 replaced by Instrument Approach Chart – ICAO RNP RWY 26

Updated information on charts and aeronautical data tabulations related with:

- Obstacle Clearance Altitude (Height) and the Operating minima for Kaunas aerodrome changes;
- Instrument Flight Procedure Approach Charts Identification transition from RNAV to RNP:
  - current Instrument Flight Procedure Approach Charts Identification RNAV<sub>(GNSS)</sub> RWY XY are replaced by a new chart title RNP RWY XY;
  - a new PBN requirement box added to each PBN approach chart.

Charts and aeronautical data tabulations:

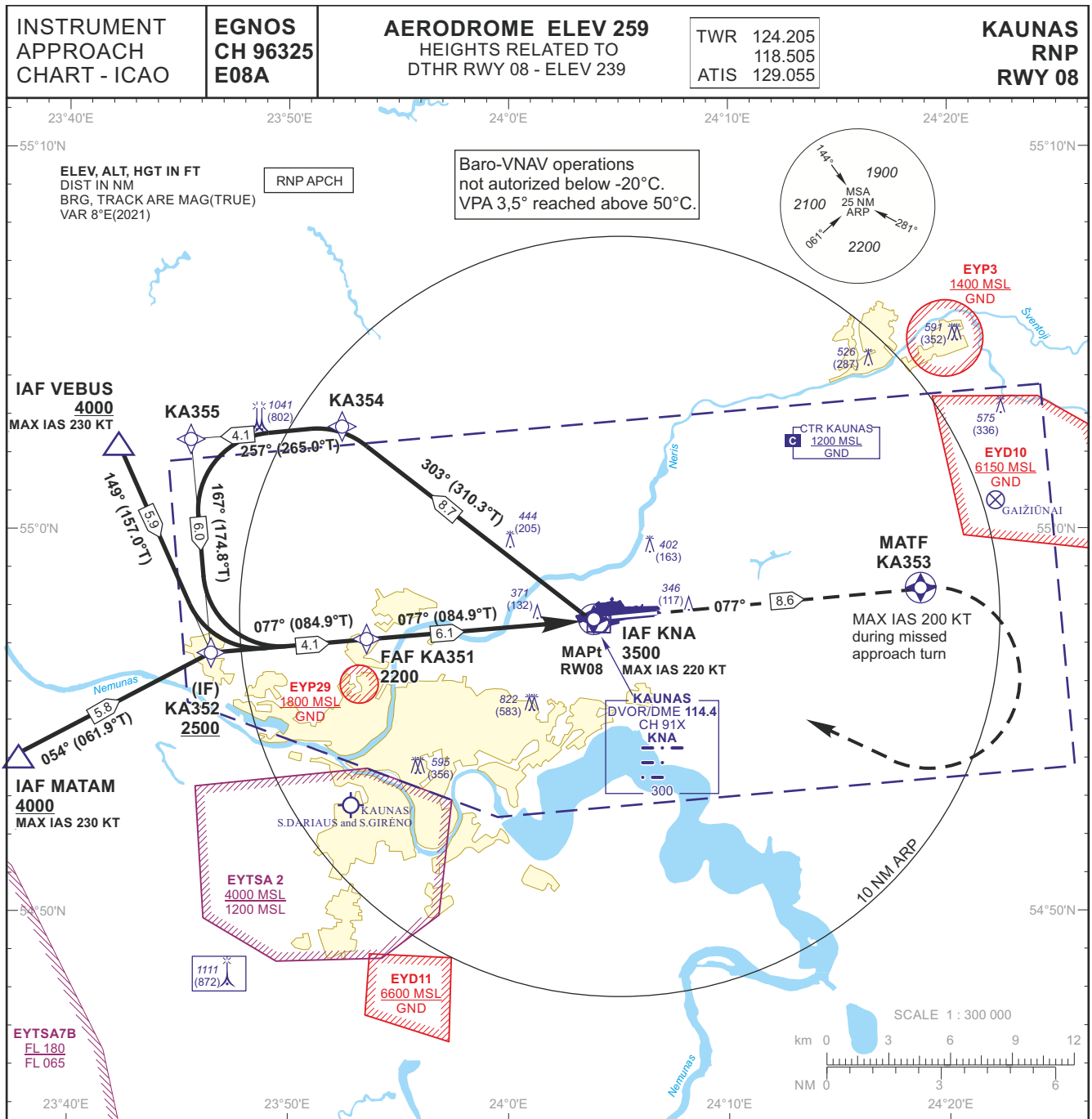
Appendix 1. Instrument Approach Chart – ICAO RNP RWY 08

Appendix 2. Instrument Approach Chart – ICAO RNP RWY 26

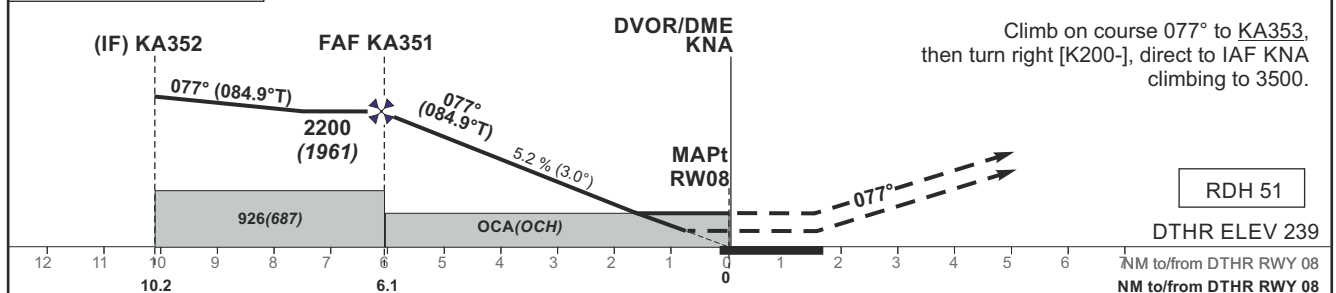
This AIP supplement will be cancelled when the contents are incorporated into AIP.

**-END-**

THIS PAGE INTENTIONALLY LEFT BLANK



TRANSITION ALT 5000 MISSED APPROACH



OCA(OCH)		A	B	C	D	DIST TO RW08				
STRAIGHT-IN APPROACH	LPV	511 (272)	524 (285)	532 (293)	542 (303)	5	4	3	2	
	LNNAV/VNAV	520 (280)	530 (290)	540 (300)	550 (310)	Altitude	1870	1550	1240	920
	LNNAV	630 (390)				Height	(1631)	(1311)	(1001)	(681)
Timing not authorized for defining the MAPt										
GS		Kts	80	100	120	140	160	180		
FAF-MAPt 6.1 NM		min:sec	4:35	3:40	3:03	2:37	2:17	2:02		
Rate of descent (5.2%)		ft/min	415	520	625	730	835	940		
For data tabulation see verso										

INSTRUMENT APPROACH CHART - ICAO	EGNOS CH 96325 E08A	AERODROME ELEV 259 HEIGHTS RELATED TO DTHR RWY 08 - ELEV 239	TWR 124.205	KAUNAS RNP RWY 08
			118.505	
			ATIS 129.055	

TABULAR DESCRIPTION

IAF KNA											
Serial Number	Path Descriptor	Waypoint Identifier	Fly-over	Course/Track °M(°T)	Magnetic Variation	Distance (NM)/ Time	Turn Direction	Altitude (FT)/ Flight level	Speed (KT)	VPA/TCH	Navigation Specification
001	IF	KNA	—	—	-7.6	—	—	3500	-220	—	RNP APCH
002	TF	KA354	—	303(310.3)	-7.6	8.7	—	—	—	—	RNP APCH
003	TF	KA355	—	257(265.0)	-7.6	4.1	—	—	—	—	RNP APCH
004	TF	KA352	—	167(174.8)	-7.6	6.0	—	+2500	—	—	RNP APCH
IAF MATAM											
Serial Number	Path Descriptor	Waypoint Identifier	Fly-over	Course/Track °M(°T)	Magnetic Variation	Distance (NM)/ Time	Turn Direction	Altitude (FT)/ Flight level	Speed (KT)	VPA/TCH	Navigation Specification
001	IF	MATAM	—	—	-7.6	—	—	+4000	-230	—	RNP APCH
002	TF	KA352	—	054(061.9)	-7.6	5.8	—	+2500	—	—	RNP APCH
IAF VEBUS											
Serial Number	Path Descriptor	Waypoint Identifier	Fly-over	Course/Track °M(°T)	Magnetic Variation	Distance (NM)/ Time	Turn Direction	Altitude (FT)/ Flight level	Speed (KT)	VPA/TCH	Navigation Specification
001	IF	VEBUS	—	—	-7.6	—	—	+4000	-230	—	RNP APCH
002	TF	KA352	—	149(157.0)	-7.6	5.9	—	+2500	—	—	RNP APCH
001	IF	KA352	—	—	-7.6	—	—	+2500	—	—	RNP APCH
002	TF	KA351	—	077(084.9)	-7.6	4.1	—	2200	—	—	RNP APCH
003	TF	RW08	Y	077(084.9)	-7.6	6.1	—	290	—	-3.00/51	RNP APCH
004	CF	KA353	Y	077(084.9)	-7.6	8.6	—	—	-200	—	RNP APCH
005	DF	KNA	—	—	-7.6	—	R	3500	-220	—	RNP APCH

WAYPOINT COORDINATES			
FIX/POINTS	COORDINATES	FIX/POINTS	COORDINATES
MATAM (IAF)	54 54 08.9N 023 37 22.7E	KA352 (IF)	54 56 52.5N 023 46 18.3E
VEBUS (IAF)	55 02 19.2N 023 42 11.7E	FAP	54 57 15.4N 023 53 38.9E
KNA (IAF)	54 57 37.4N 024 03 59.1E	KA351 (FAF)	54 57 14.7N 023 53 22.5E
KA354	55 03 12.8N 023 52 27.9E	RW08 (MAPt)	54 57 46.4N 024 03 50.9E
KA355	55 02 51.2N 023 45 21.8E	KA353 (MATF)	54 58 29.9N 024 18 43.5E

INSTRUMENT APPROACH CHART - ICAO	EGNOS CH 96325 E08A	AERODROME ELEV 259 HEIGHTS RELATED TO DTHR RWY 08 - ELEV 239	TWR 124.205 118.505 ATIS 129.055	KAUNAS RNP RWY 08
--	---------------------------	--	--	-------------------------

**SBAS FAS Data Block  
Input Data**

Parameters	Values
Operation	0
SBAS Provider Identifier	1
Airport Identifier	EYKA
Runway Number	08
Runway Letter	0
Approach Performance Designator	0
Route Indicator	
Reference Path Data Selector	0
Reference Path Identifier	E08A
LTP/FTP Latitude	545746.4355N
LTP/FTP Longitude	0240350.9440E
LTP/FTP Height above ellipsoid (meters)	97.3
FPAP Latitude	545754.4070N
Delta FPAP Latitude (seconds)	7.9715
FPAP Longitude	0240631.9720E
Delta FPAP Longitude (seconds)	161.0280
Approach Threshold Crossing Height (TCH)	51.0
Approach TCH Units Selector	0
Glidepath Angle (GPA)	3.00
Course Width at threshold (meters)	105.00
Length Offset (meters)	224
Horizontal Alert Limit (HAL) (meters)	40.0
Vertical Alert Limit (VAL) (meters)	50.0
Final Approach Segment CRC	A0F43308

**Output Data**

Data Block	10 01 0B 19 05 08 00 00 01 38 30 05 87 67 96 17 40 C4 53 0A CD 17 47 3E 00 08 EA 04 FE 01 2C 01 64 1C C8 FA A0 F4 33 08
------------	--

**Required Additional Data (not CRC wrapped)**

ICAO Code	EY
LTP/FTP Orthometric Height (meters)	72.7
FPAP Orthometric Height (meters)	80.1

THIS PAGE INTENTIONALLY LEFT BLANK



INSTRUMENT APPROACH CHART - ICAO	EGNOS CH 54506 E26A	AERODROME ELEV 259 HEIGHTS RELATED TO DTHR RWY 26 - ELEV 258	TWR 124.205	KAUNAS RNP RWY 26
			118.505	
			ATIS 129.055	

TABULAR DESCRIPTION

IAF KNA											
Serial Number	Path Descriptor	Waypoint Identifier	Fly-over	Course/Track °M(°T)	Magnetic Variation	Distance (NM)/ Time	Turn Direction	Altitude (FT)/ Flight level	Speed (KT)	VPA/TCH	Navigation Specification
001	IF	KNA	—	—	-7.6	—	—	3500	-220	—	RNP APCH
002	TF	KA454	—	116(123.5)	-7.6	9.4	—	—	—	—	RNP APCH
003	TF	KA455	—	078(085.2)	-7.6	4.1	—	—	—	—	RNP APCH
004	TF	KA452	—	348(355.3)	-7.6	6.0	—	+2500	—	—	RNP APCH

IAF NASAP											
Serial Number	Path Descriptor	Waypoint Identifier	Fly-over	Course/Track °M(°T)	Magnetic Variation	Distance (NM)/ Time	Turn Direction	Altitude (FT)/ Flight level	Speed (KT)	VPA/TCH	Navigation Specification
001	IF	NASAP	—	—	-7.6	—	—	+5000	-230	—	RNP APCH
002	TF	KA456	—	138(146.0)	-7.6	3.4	—	+4000	—	—	RNP APCH
003	TF	KA457	—	185(192.2)	-7.6	4.4	—	—	—	—	RNP APCH
004	TF	KA452	—	276(283.3)	-7.6	3.6	—	+2500	—	—	RNP APCH

IAF REGLU											
Serial Number	Path Descriptor	Waypoint Identifier	Fly-over	Course/Track °M(°T)	Magnetic Variation	Distance (NM)/ Time	Turn Direction	Altitude (FT)/ Flight level	Speed (KT)	VPA/TCH	Navigation Specification
001	IF	REGLU	—	—	-7.6	—	—	+4000	-230	—	RNP APCH
002	TF	KA452	—	336(343.7)	-7.6	7.4	—	+2500	—	—	RNP APCH
001	IF	KA452	—	—	-7.6	—	—	+2500	—	—	RNP APCH
002	TF	KA451	—	258(265.3)	-7.6	4.1	—	2200	—	—	RNP APCH
003	TF	RW26	Y	258(265.2)	-7.6	6.0	—	310	—	-3.00/52	RNP APCH
004	CF	KA453	Y	258(265.2)	-7.6	9.7	—	—	-210	—	RNP APCH
005	DF	KNA	—	—	-7.6	—	R	3500	-220	—	RNP APCH

WAYPOINT COORDINATES

FIX/POINTS	COORDINATES	FIX/POINTS	COORDINATES
NASAP (IAF)	55 04 57.2N 024 28 10.6E	KA457	54 57 55.1N 024 29 51.4E
REGLU (IAF)	54 51 37.2N 024 27 23.7E	KA452 (IF)	54 58 43.9N 024 23 46.8E
KNA (IAF)	54 57 37.4N 024 03 59.1E	FAP	54 58 23.1N 024 16 25.6E
KA454	54 52 26.0N 024 17 33.7E	KA451 (FAF)	54 58 24.1N 024 16 42.0E
KA455	54 52 46.2N 024 24 37.3E	RW26 (MAPt)	54 57 53.8N 024 06 19.5E
KA456	55 02 09.7N 024 31 27.3E	KA453 (MATF)	54 57 03.0N 023 49 33.4E



INSTRUMENT APPROACH CHART - ICAO	EGNOS CH 54506 E26A	AERODROME ELEV 259 HEIGHTS RELATED TO DTHR RWY 26 - ELEV 258	TWR 124.205 118.505 ATIS 129.055	KAUNAS RNP RWY 26
--	---------------------------	--	--	-------------------------

**SBAS FAS Data Block  
Input Data**

Parameters	Values
Operation	0
SBAS Provider Identifier	1
Airport Identifier	EYKA
Runway Number	26
Runway Letter	0
Approach Performance Designator	0
Route Indicator	
Reference Path Data Selector	0
Reference Path Identifier	E26A
LTP/FTP Latitude	545753.7900N
LTP/FTP Longitude	0240619.4615E
LTP/FTP Height above ellipsoid (meters)	103.2
FPAP Latitude	545745.8230N
Delta FPAP Latitude (seconds)	-7.9670
FPAP Longitude	0240338.6230E
Delta FPAP Longitude (seconds)	-160.8385
Approach Threshold Crossing Height (TCH)	52.0
Approach TCH Units Selector	0
Glidepath Angle (GPA)	3.00
Course Width at threshold (meters)	105.00
Length Offset (meters)	224
Horizontal Alert Limit (HAL) (meters)	40.0
Vertical Alert Limit (VAL) (meters)	50.0
Final Approach Segment CRC	DED0E465

**Output Data**

Data Block	10 01 0B 19 05 1A 00 00 01 36 32 05 FC A0 96 17 8B 4C 58 0A 08 18 C2 C1 FF 73 17 FB 08 02 2C 01 64 1C C8 FA DE D0 E4 65
------------	--

**Required Additional Data (not CRC wrapped)**

ICAO Code	EY
LTP/FTP Orthometric Height (meters)	78.7
FPAP Orthometric Height (meters)	71.8

THIS PAGE INTENTIONALLY LEFT BLANK