



Phone:	+370 706 94 613	SE "ORO NAVIGACIJA"	AIP SUP: 009/2020
Fax:	+370 706 94 614	Aeronautical Information Service	Effective Date: 03-Dec-2020
AFS:	EYVNYOYX	Balio Karvelio Str. 25	End Date:
URL:	www.ans.lt	LT-02184 Vilnius, Lithuania	Publication Date: 30-Sep-2020
Email:	ais@ans.lt		

S 009. NEW INSTRUMENT APPROACH CHARTS RNP (LNAV ONLY) FOR SIAULIAI AERODROME

The following AIP subsections affected: GEN 3.2 EYSA AD 2.24

This AIP supplement provides information on new Siauliai aerodrome (EYSA) Instrument approach charts RNP (LNAV only) for RWY 14L/32R.

New charts and related aeronautical data tabulations:

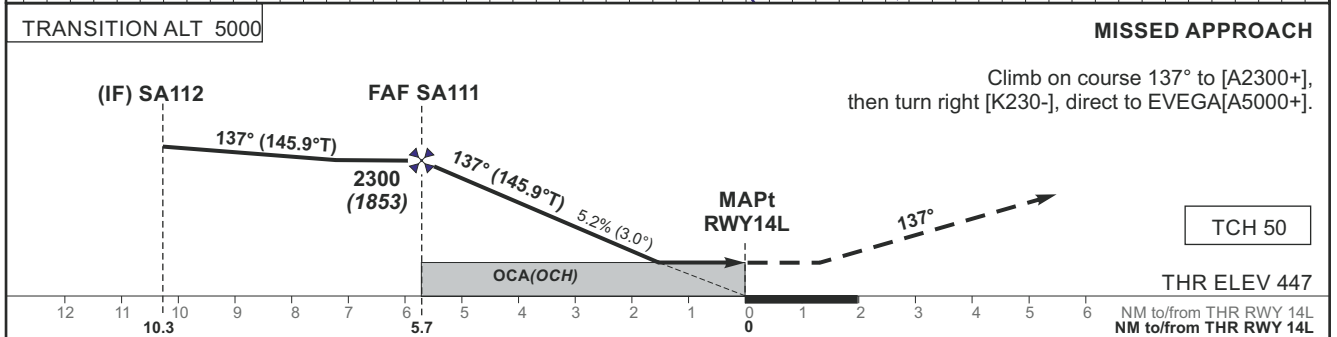
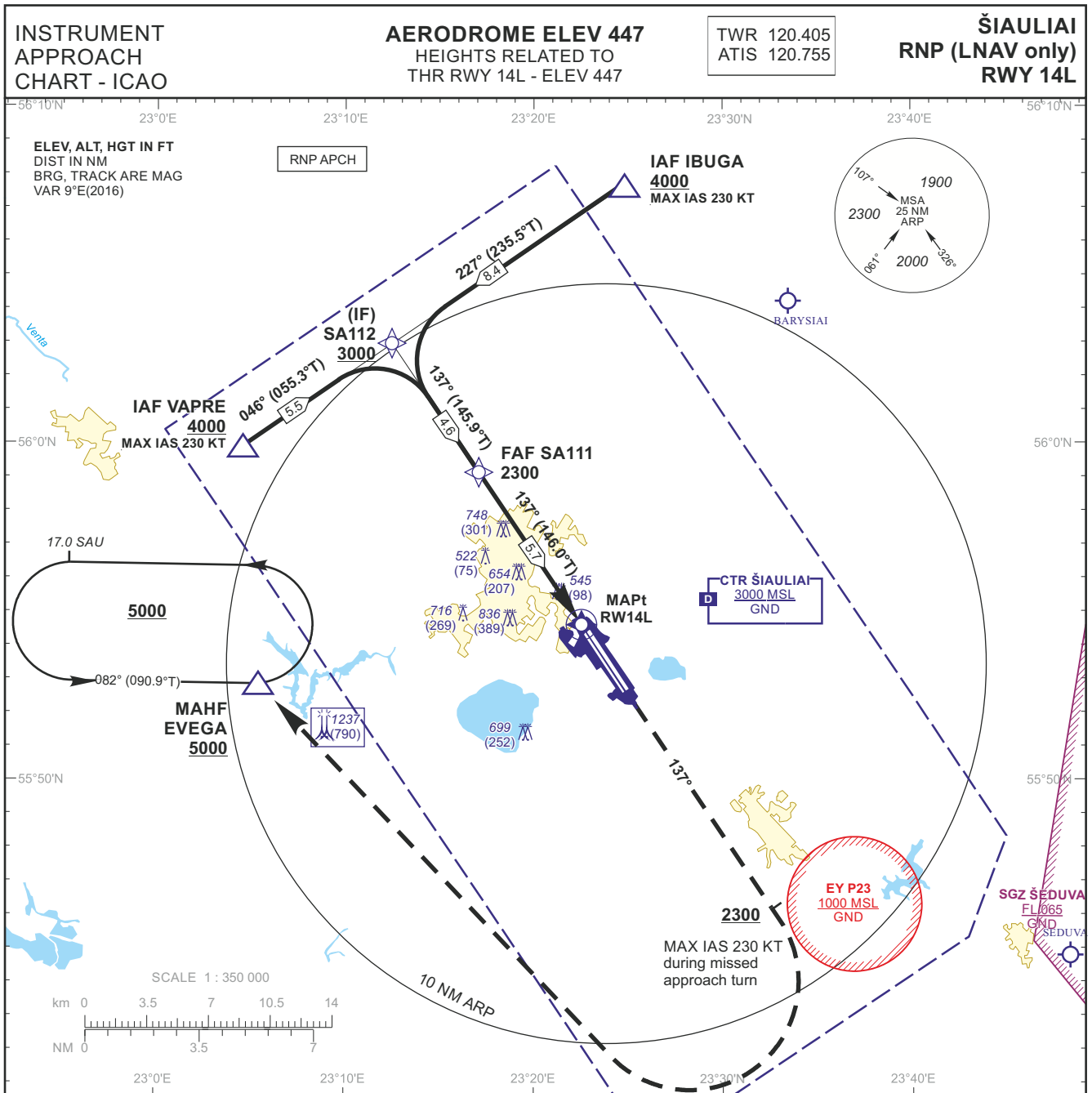
Appendix 1. Instrument Approach Chart – ICAO RNP (LNAV only) RWY 14L

Appendix 2. Instrument Approach Chart – ICAO RNP (LNAV only) RWY 32R

This AIP Supplement will be cancelled when the contents are incorporated into AIP.

-END-

THIS PAGE INTENTIONALLY LEFT BLANK



OCA(OCH)		A	B	C	D	DIST THR RWY 14L				
STRAIGHT-IN APPROACH	LNAV	980 (540)				Altitude	2080	1760	1450	1130
						Height	(1633)	(1313)	(1003)	(683)
Timing not authorized for defining the MAPt										
Remark:		GS	Kts	80	100	120	140	160	180	
		FAF - MAPt 5.7 NM	min:sec	4:16	3:25	2:51	2:26	2:08	1:54	
		Rate of descent (5.2%)	ft/min	415	520	625	730	835	940	

For data tabulation see verso

INSTRUMENT
APPROACH
CHART - ICAO

AERODROME ELEV 447
HEIGHTS RELATED TO
THR RWY 14L - ELEV 447

TWR 120.405
ATIS 120.755

ŠIAULIAI
RNP (LNAV only)
RWY 14L

TABULAR DESCRIPTION

IAF IBUGA

Serial Number	Path Descriptor	Waypoint Identifier	Fly-over	Course/Track °M(°T)	Magnetic Variation	Distance (NM)/ Time	Turn Direction	Altitude (FT)/ Flight level	Speed (KT)	VPA/TCH	Navigation Specification
001	IF	IBUGA	—	—	-8.9	—	—	+4000	-230	—	RNP APCH
002	TF	SA112	—	227(235.5)	-8.9	8.4	—	+3000	—	—	RNP APCH

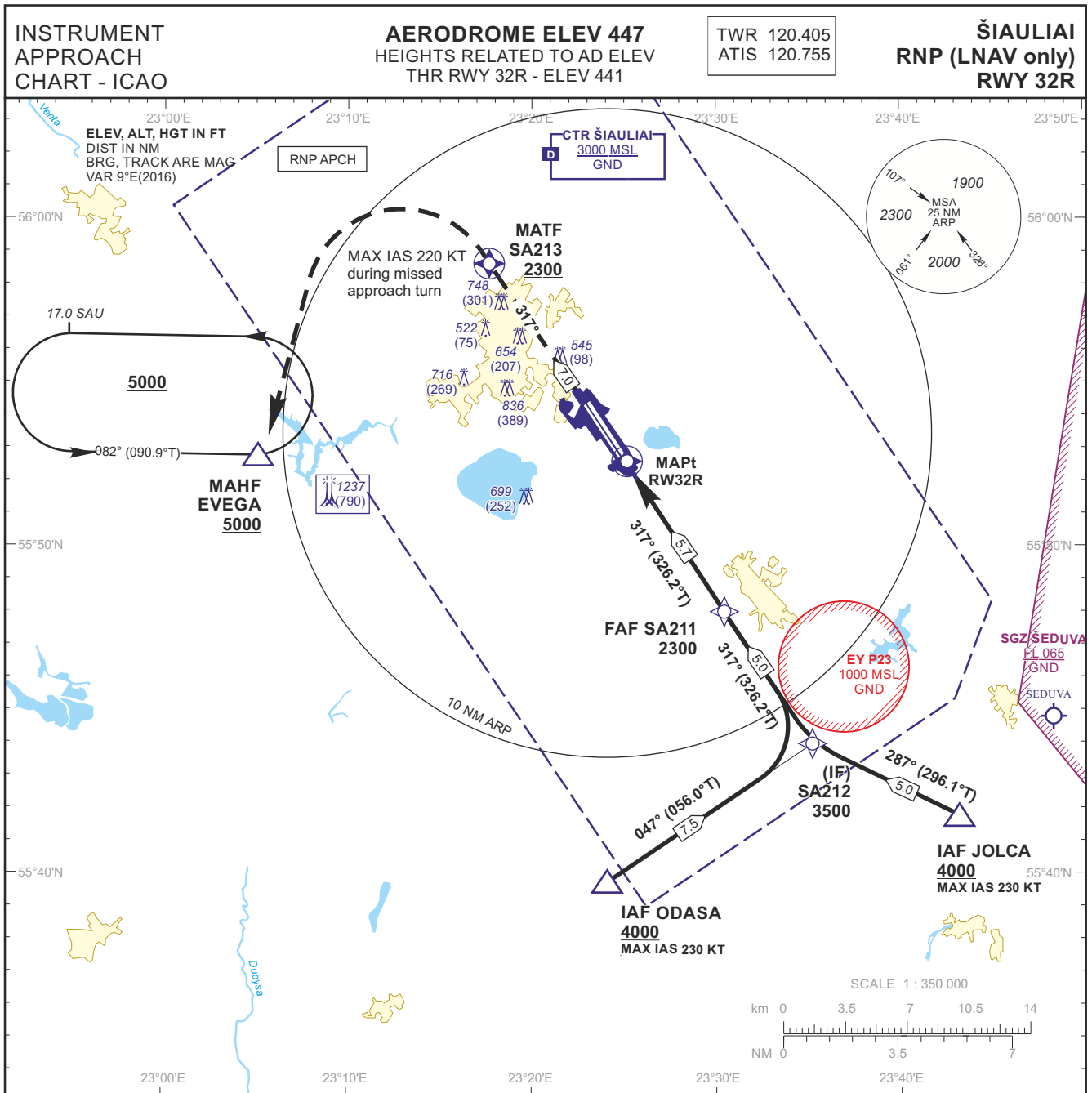
IAF VAPRE

Serial Number	Path Descriptor	Waypoint Identifier	Fly-over	Course/Track °M(°T)	Magnetic Variation	Distance (NM)/ Time	Turn Direction	Altitude (FT)/ Flight level	Speed (KT)	VPA/TCH	Navigation Specification
001	IF	VAPRE	—	—	-8.9	—	—	+4000	-230	—	RNP APCH
002	TF	SA112	—	046(055.3)	-8.9	5.5	—	+3000	—	—	RNP APCH

001	TF	SA112	—	—	-8.9	—	—	+3000	—	—	RNP APCH
002	TF	SA111	—	137(145.9)	-8.9	4.6	—	2300	—	—	RNP APCH
003	TF	RW14L	Y	137(146.0)	-8.9	5.7	—	990	—	-3.00/50	RNP APCH
004	CA	—	—	137(146.0)	-8.9	—	—	+2300	-230	—	RNP APCH
005	DF	EVEGA	—	—	-8.9	—	R	+5000	—	—	RNP APCH
006	HM	EVEGA	—	082(090.9)	-8.9	—	L	+5000	—	—	RNP APCH

WAYPOINT COORDINATES

FIX/POINTS	COORDINATES
EVEGA (MAHF)	55 52 52.4N 023 05 27.0E
IBUGA (IAF)	56 07 42.9N 023 24 45.4E
VAPRE (IAF)	55 59 51.2N 023 04 24.3E
SA112 (IF)	56 02 58.3N 023 12 28.4E
SA111 (FAF)	55 59 08.5N 023 17 05.4E
RW14L (MAPt)	55 54 24.9N 023 22 45.8E



MISSED APPROACH

TRANSITION ALT 5000

Climb on course 317° to SA213[A2300+], then turn left [K220-], direct to EVEGA[A5000+].

TCH 50

THR ELEV 441



OCA(OCH)		A	B	C	D	DIST THR RWY 32R										
STRAIGHT-IN APPROACH	LNAV	810 (360)				Altitude	2080	1760	1450	1130	820					
						Height	(1633)	(1313)	(1003)	(683)	(373)					
Timing not authorized for defining the MAPt																
		GS	Kts	80	100	120	140	160	180							
		FAF - MAPt 5.7 NM	min:sec	4:16	3:25	2:51	2:26	2:08	1:54							
		Rate of descent (5.2%)	ft/min	415	520	625	730	835	940							

For data tabulation see verso

INSTRUMENT
APPROACH
CHART - ICAO

AERODROME ELEV 447
HEIGHTS RELATED TO AD ELEV
THR RWY 32R - ELEV 441

TWR 120.405
ATIS 120.755

ŠIAULIAI
RNP (LNAV only)
RWY 32R

TABULAR DESCRIPTION

IAF IBUGA

Serial Number	Path Descriptor	Waypoint Identifier	Fly-over	Course/Track °M(°T)	Magnetic Variation	Distance (NM)/ Time	Turn Direction	Altitude (FT)/ Flight level	Speed (KT)	VPA/TCH	Navigation Specification
001	IF	ODASA	—	—	-8.9	—	—	+4000	-230	—	RNP APCH
002	TF	SA212	—	047(056.0)	-8.9	7.5	—	+3500	—	—	RNP APCH

IAF JOLCA

Serial Number	Path Descriptor	Waypoint Identifier	Fly-over	Course/Track °M(°T)	Magnetic Variation	Distance (NM)/ Time	Turn Direction	Altitude (FT)/ Flight level	Speed (KT)	VPA/TCH	Navigation Specification
001	IF	JOLCA	—	—	-8.9	—	—	+4000	-230	—	RNP APCH
002	TF	SA212	—	287(296.1)	-8.9	5.0	—	+3500	—	—	RNP APCH

001	TF	SA212	—	—	-8.9	—	—	+3500	—	—	RNP APCH
002	TF	SA211	—	317(326.2)	-8.9	5.0	—	2300	—	—	RNP APCH
003	TF	RW32R	Y	317(326.2)	-8.9	5.7	—	810	—	-3.00/50	RNP APCH
004	CF	SA213	Y	317(326.2)	-8.9	7.0	—	+2300	-220	—	RNP APCH
005	DF	EVEGA	—	221(230.0)	-8.9	9.0	L	+5000	—	—	RNP APCH
006	HM	EVEGA	—	082(090.9)	-8.9	—	L	+5000	—	—	RNP APCH

WAYPOINT COORDINATES

FIX/POINTS	COORDINATES
EVEGA (MAHF)	55 52 52.4N 023 05 27.0E
ODASA (IAF)	55 39 46.4N 023 24 09.9E
JOLCA (IAF)	55 41 46.8N 023 43 09.0E
SA212 (IF)	55 43 58.3N 023 35 12.4E
SA211 (FAF)	55 48 06.1N 023 30 18.0E
SA213 (MATF)	55 58 38.6N 023 17 40.9E
RW32R (MAPt)	55 52 50.9N 023 24 38.2E