



Phone:	+370 706 94 613	SE "ORO NAVIGACIJA"	AIP SUP: 001/2022
Fax:	+370 706 94 614	Aeronautical Information Service	Effective Date: 27-Jan-2022
AFS:	EYVNYOYX	Balio Karvelio Str. 25	End Date: 23-Feb-2022
URL:	www.ans.lt	LT-02184 Vilnius, Lithuania	Publication Date: 27-Oct-2021
Email:	ais@ans.lt		

S 001. SBAS FAS DATA BLOCK UPDATED FOR PALANGA AERODROME INSTRUMENT APPROACH CHART

The following AIP subsections affected: EYPA AD 2.24-21 (page 3)

The purpose of this AIP Supplement is to provide updated SBAS FAS Data Block values published on Instrument Approach Chart ICAO RNP RWY 01 due to changes to Palanga aerodrome RWY 01/19 data.

SBAS FAS Data Block values updated:

Input data: LTP/FTP Latitude, LTP/FTP Longitude, LTP/FTP Height above ellipsoid, FPAP Latitude, Delta FPAP Latitude, FPAP Longitude, Delta FPAP Longitude, Final Approach Segment CRC.

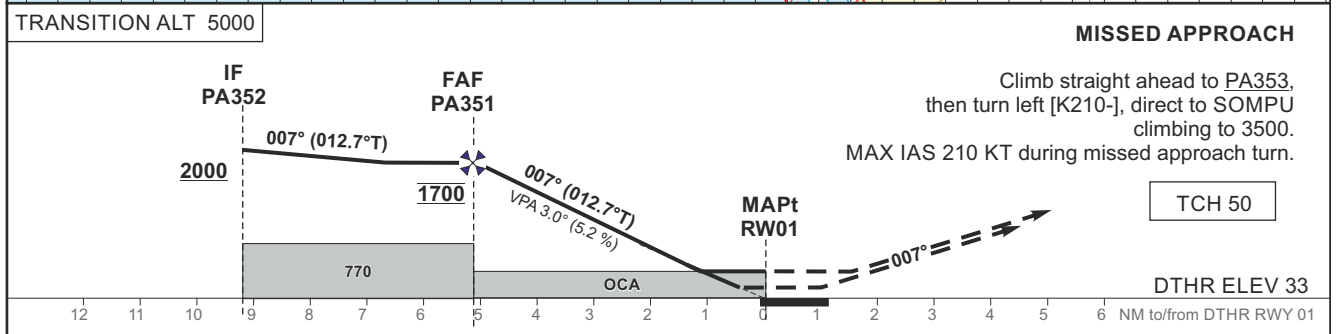
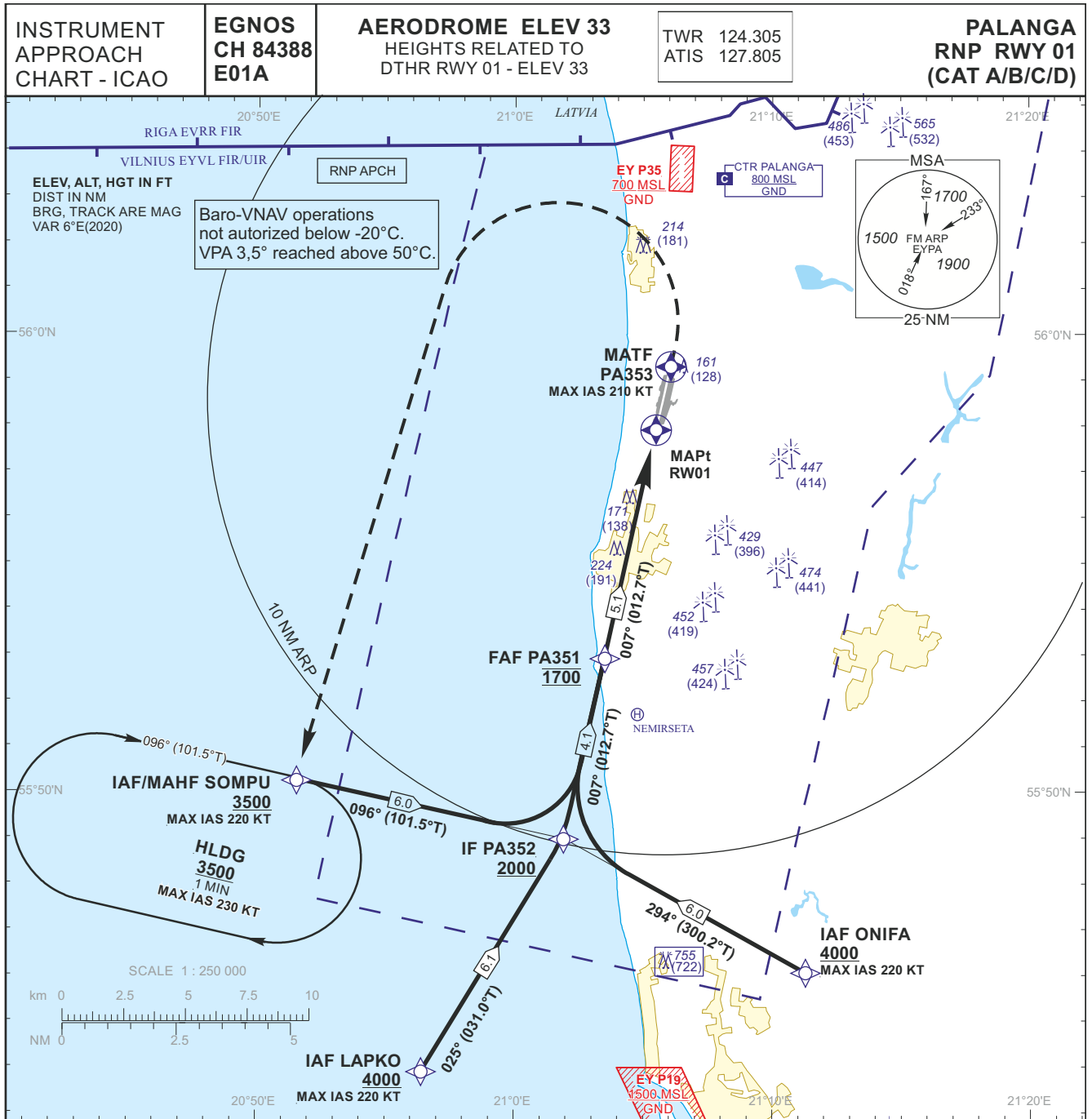
Output data: Data block.

This AIP supplement will be cancelled when the contents are incorporated into AIP.

Appendix. Instrument Approach Chart – ICAO RNP RWY 01

-END-

THIS PAGE INTENTIONALLY LEFT BLANK



OCA(OCH)		A	B	C	D	DIST TO RW01								
STRAIGHT-IN APPROACH	LPV	283 (250)	286 (253)	294 (261)	304(271)	Altitude	1680	1360	1040	720				
	LNAV/VNAV	290 (250)	290 (260)	300 (270)	310 (280)	Timing not authorized for defining the MAPt								
	LNAV	470 (440)												
CIRCLING		460 (430)	710 (680)	860 (820)	not authorized	GS	Kts	80	100	120	140	160	180	
						FAF-MAPt	5.1 NM	min:sec	3:49	3:03	2:33	2:11	1:55	1:42
						Rate of descent (5.2%)	ft/min	415	520	625	730	835	940	

For data tabulation see verso

INSTRUMENT APPROACH CHART - ICAO	EGNOS CH 84388 E01A	AERODROME ELEV 33 HEIGHTS RELATED TO DTHR RWY 01 - ELEV 33	TWR 124.305 ATIS 127.805	PALANGA RNP RWY 01 (CAT A/B/C/D)
----------------------------------	---------------------	---	-----------------------------	---

TABULAR DESCRIPTION

IAF LAPKO

Serial Number	Path Descriptor	Waypoint Identifier	Fly-over	Course/Track °M(°T)	Magnetic Variation	Distance (NM)/ Time	Turn Direction	Altitude (FT)/ Flight level	Speed (KT)	VPA/TCH	Navigation Specification
001	IF	LAPKO	—	—	-5.9	—	—	+4000	-220	—	RNP APCH
002	TF	PA352	—	025(031.0)	-5.9	6.1	—	+2000	—	—	RNP APCH

IAF ONIFA

Serial Number	Path Descriptor	Waypoint Identifier	Fly-over	Course/Track °M(°T)	Magnetic Variation	Distance (NM)/ Time	Turn Direction	Altitude (FT)/ Flight level	Speed (KT)	VPA/TCH	Navigation Specification
001	IF	ONIFA	—	—	-5.9	—	—	+4000	-220	—	RNP APCH
002	TF	PA352	—	294(300.2)	-5.9	6.0	—	+2000	—	—	RNP APCH

IAF SOMPU

Serial Number	Path Descriptor	Waypoint Identifier	Fly-over	Course/Track °M(°T)	Magnetic Variation	Distance (NM)/ Time	Turn Direction	Altitude (FT)/ Flight level	Speed (KT)	VPA/TCH	Navigation Specification
001	IF	SOMPU	—	—	-5.9	—	—	+3500	-220	—	RNP APCH
002	TF	PA352	—	096(101.5)	-5.9	6.0	—	+2000	—	—	RNP APCH

001	IF	PA352	—	—	-5.9	—	—	+2000	—	—	RNP APCH
002	TF	PA351	—	007(012.71)	-5.9	4.10	—	@1700	—	—	RNP APCH
003	TF	RW01	Y	007(012.73)	-5.9	5.12	—	@83	—	-3.00/50	RNP APCH
004	DF	PA353	Y	—	-5.9	—	—	—	-210	—	RNP APCH
005	DF	SOMPU	—	—	-5.9	—	L	+3500	-220	—	RNP APCH
006	HM	SOMPU	—	096(101.5)	-5.9	1 min	R	+3500	-230	—	RNAV 1

WAYPOINT COORDINATES

FIX/POINTS	COORDINATES
SOMPU (IAF/MAHF)	55 50 04.5N 020 51 23.2E
LAPKO (IAF)	55 43 39.9N 020 56 15.3E
ONIFA (IAF)	55 45 51.4N 021 11 02.4E
PA352 (IF)	55 48 53.5N 021 01 49.1E
PA351 (FAF)	55 52 53.0N 021 03 25.0E
FAP	55 52 59.4N 021 03 27.5E
RW01 (MAPt)	55 57 51.9N 021 05 25.1E
PA353 (MATF)	56 00 18.0N 021 06 24.0E

INSTRUMENT APPROACH CHART - ICAO	EGNOS CH 84388 E01A	AERODROME ELEV 33 HEIGHTS RELATED TO DTHR RWY 01 - ELEV 33	TWR 124.305 ATIS 127.805	PALANGA RNP RWY 01 (CAT A/B/C/D)
--	---------------------------	---	-----------------------------	---

**SBAS FAS Data Block
Input Data**

Parameters	Values
Operation	0
SBAS Provider Identifier	1
Airport Identifier	EYPA
Runway Number	01
Runway Letter	0
Approach Performance Designator	0
Route Indicator	
Reference Path Data Selector	0
Reference Path Identifier	E01A
LTP/FTP Latitude	555751.9300N
LTP/FTP Longitude	0210525.1135E
LTP/FTP Height above ellipsoid (meters)	34.6
FPAP Latitude	555859.0920N
Delta FPAP Latitude (seconds)	67.1620
FPAP Longitude	0210552.1745E
Delta FPAP Longitude (seconds)	27.0610
Approach Threshold Crossing Height (TCH)	50.0
Approach TCH Units Selector	0
Glidepath Angle (GPA)	3.00
Course Width at threshold (meters)	105.00
Length Offset (meters)	0
Horizontal Alert Limit (HAL) (meters)	40.0
Vertical Alert Limit (VAL) (meters)	50.0
Final Approach Segment CRC	4454A2B2

Output Data

Data Block	10 01 10 19 05 01 00 00 01 31 30 05 74 6F 04 18 F3 0C 0D 09 5A 15 B4 0C 02 6A D3 00 F4 01 2C 01 64 00 C8 FA 44 54 A2 B2
------------	--

Required Additional Data (not CRC wrapped)

ICAO Code	EY
LTP/FTP Orthometric Height (meters)	10.0
FPAP Orthometric Height (meters)	9.7

THIS PAGE INTENTIONALLY LEFT BLANK