



Tel.	+370 706 94 613	VĮ „ORO NAVIGACIJA“	<b>AIP SUP: 004/2021</b>
Faks.	+370 706 94 614	Oro navigacijos informacijos skyrius	<b>Galioja nuo: 17-Jun-2021</b>
AFS:	EYVNYOYX	Balio Karvelio g. 25	<b>iki:</b>
URL:	www.ans.lt	02184 Vilnius, Lietuva	<b>Paskelbtas: 29-Apr-2021</b>
El.p.	ais@ans.lt		

## S 004. ATNAUJINTI KAUNO AERODROMO ARTĖJIMO TŪPTI PAGAL PRIETAISUS ŽEMĖLAPIAI

Keičiasi šios AIP dalys: GEN 3.2 EYKA AD-2.24

Šiame AIP papildyme pateikiama informacija susijusi su atnaujintais Kauno aerodromo artėjimo tūpti pagal prietaisus žemėlapiams.

Atnaujinta informacija žemėlapiuose ir navigaciniai duomenys yra susiję su pakeistais Kauno aerodromo kliūčių perskridimo aukščiais ir Kauno aerodromo naudojimo minimumais, atnaujintu magnetiniu nuokrypiu bei kitais pakeitimais dėl reikalavimų žemėlapiams įgyvendinimo.

Nuo **2021 m. birželio 17 d.** įsigalioja šie pakeitimai:

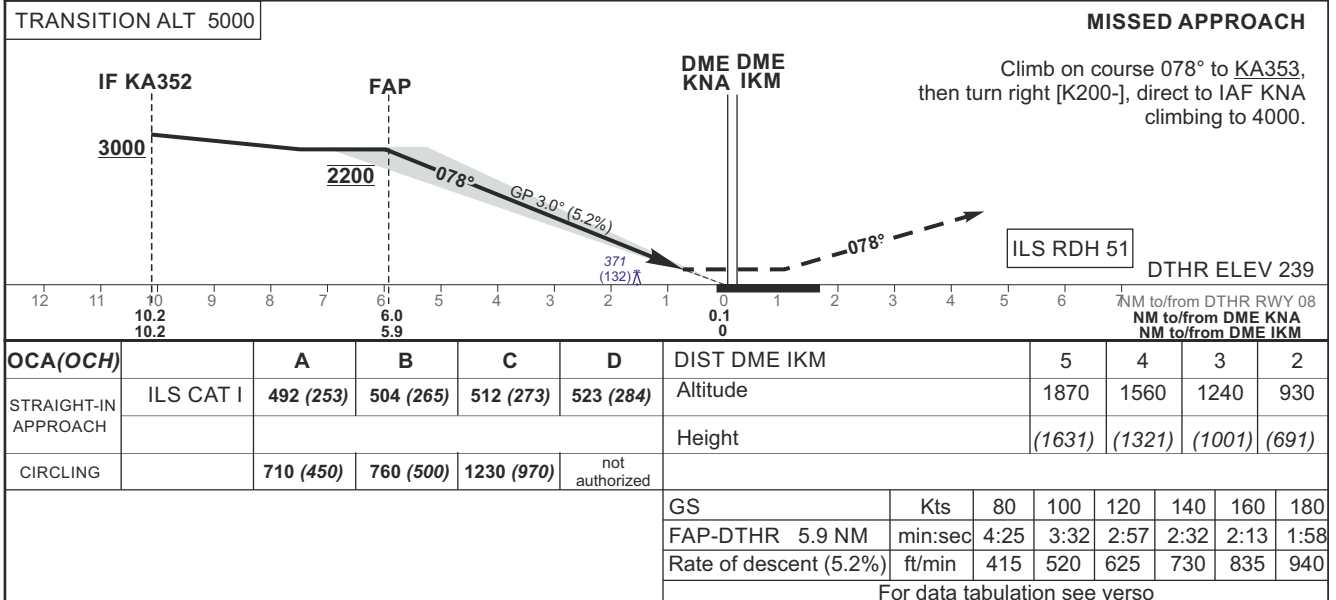
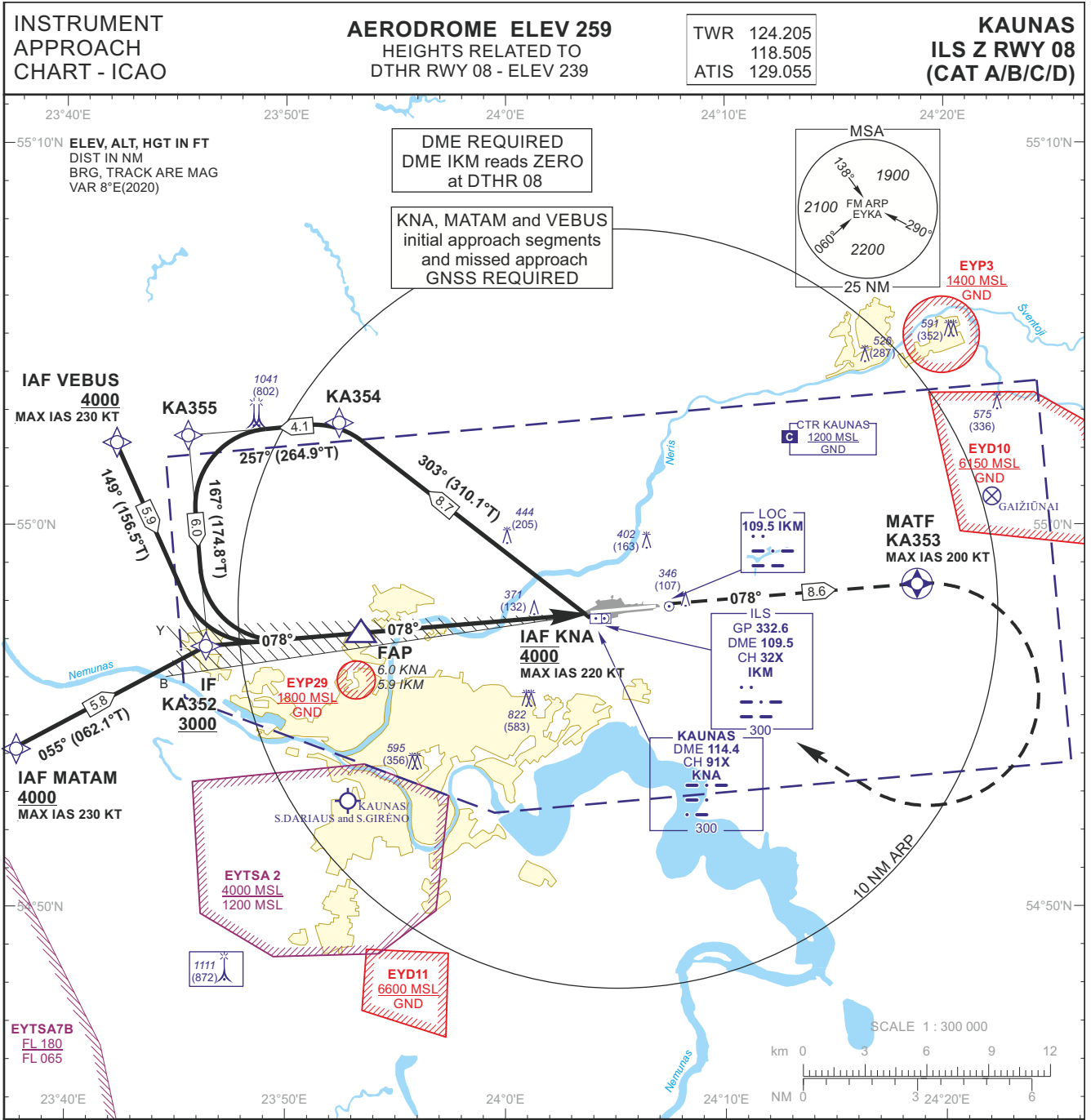
- EYKA AD 2.24-20 Artėjimo tūpti pagal prietaisus žemėlapij – ICAO ILS or LOC RWY 08 keičia:
  - Artėjimo tūpti pagal prietaisus žemėlapis – ICAO ILS Z RWY 08 (CAT A/B/C/D)
  - Artėjimo tūpti pagal prietaisus žemėlapis – ICAO ILS Y or LOC RWY 08 (CAT A/B/C/D)
- EYKA AD 2.24-21 Artėjimo tūpti pagal prietaisus žemėlapij – ICAO ILS or LOC RWY 26 keičia:
  - Artėjimo tūpti pagal prietaisus žemėlapis – ICAO ILS CAT II Z RWY 26 (CAT A/B/C/D)
  - Artėjimo tūpti pagal prietaisus žemėlapis – ICAO ILS CAT II Y or LOC RWY 26 (CAT A/B/C/D)
- EYKA AD 2.24-22 Artėjimo tūpti pagal prietaisus žemėlapij – ICAO VOR RWY 08 keičia:
  - Artėjimo tūpti pagal prietaisus žemėlapis – ICAO VOR Z RWY 08 (CAT A/B)
  - Artėjimo tūpti pagal prietaisus žemėlapis – ICAO VOR Y RWY 08 (CAT C/D)
- EYKA AD 2.24-23 Artėjimo tūpti pagal prietaisus žemėlapij – ICAO VOR RWY 26 keičia:
  - Artėjimo tūpti pagal prietaisus žemėlapis – ICAO VOR Z RWY 26 (CAT A/B)
  - Artėjimo tūpti pagal prietaisus žemėlapis – ICAO VOR Y RWY 26 (CAT C/D)
- EYKA AD 2.24-24 Artėjimo tūpti pagal prietaisus žemėlapij – ICAO NDB RWY 08 keičia:
  - Artėjimo tūpti pagal prietaisus žemėlapis – ICAO NDB Z RWY 08 (CAT A/B)
  - Artėjimo tūpti pagal prietaisus žemėlapis – ICAO NDB Y RWY 08 (CAT C/D)
- EYKA AD 2.24-25 Artėjimo tūpti pagal prietaisus žemėlapij – ICAO NDB RWY 26 keičia:
  - Artėjimo tūpti pagal prietaisus žemėlapis – ICAO NDB Z RWY 26 (CAT A/B)
  - Artėjimo tūpti pagal prietaisus žemėlapis – ICAO NDB Y RWY 26 (CAT C/D)

Artėjimo tūpti pagal prietaisus žemėlapiai ir susiję navigaciniai duomenys:

- Priedas. Artėjimo tūpti pagal prietaisus žemėlapis – ICAO ILS Z RWY 08 (CAT A/B/C/D)
- Priedas. Artėjimo tūpti pagal prietaisus žemėlapis – ICAO ILS Y or LOC RWY 08 (CAT A/B/C/D)
- Priedas. Artėjimo tūpti pagal prietaisus žemėlapis – ICAO ILS CAT II Z RWY 26 (CAT A/B/C/D)
- Priedas. Artėjimo tūpti pagal prietaisus žemėlapis – ICAO ILS CAT II Y or LOC RWY 26 (CAT A/B/C/D)
- Priedas. Artėjimo tūpti pagal prietaisus žemėlapis – ICAO VOR Z RWY 08 (CAT A/B)
- Priedas. Artėjimo tūpti pagal prietaisus žemėlapis – ICAO VOR Y RWY 08 (CAT C/D)

- 7 Priedas. Artėjimo tūpti pagal prietaisus žemėlapis – ICAO VOR Z RWY 26 (CAT A/B)
  - 8 Priedas. Artėjimo tūpti pagal prietaisus žemėlapis – ICAO VOR Y RWY 26 (CAT C/D)
  - 9 Priedas. Artėjimo tūpti pagal prietaisus žemėlapis – ICAO NDB Z RWY 08 (CAT A/B)
  - 10 Priedas. Artėjimo tūpti pagal prietaisus žemėlapis – ICAO NDB Y RWY 08 (CAT C/D)
  - 11 Priedas. Artėjimo tūpti pagal prietaisus žemėlapis – ICAO NDB Z RWY 26 (CAT A/B)
  - 12 Priedas. Artėjimo tūpti pagal prietaisus žemėlapis – ICAO NDB Y RWY 26 (CAT C/D)
- Šis AIP papildymas galios tol kol informacija bus įtraukta į AIP.

**-PABAIGA-**



INSTRUMENT  
APPROACH  
CHART - ICAO

**AERODROME ELEV 259**  
HEIGHTS RELATED TO  
DTHR RWY 08 - ELEV 239

TWR 124.205  
118.505  
ATIS 129.055

**KAUNAS**  
**ILS Z RWY 08**  
**(CAT A/B/C/D)**

TABULAR DESCRIPTION

**IAF KNA, INITIAL APPROACH**

Serial Number	Path Descriptor	Waypoint Identifier	Fly-over	Course/Track °M(°T)	Magnetic Variation	Distance (NM)/ Time	Turn Direction	Altitude (FT)/ Flight level	Speed (KT)	VPA/TCH	Navigation Specification
001	IF	KNA	—	—	-7.5	—	—	@4000	-220	—	RNAV 1
002	TF	KA354	—	303(310.1)	-7.5	8.7	—	—	—	—	RNAV 1
003	TF	KA355	—	257(264.9)	-7.5	4.1	—	—	—	—	RNAV 1
004	TF	KA352	—	167(174.8)	-7.5	6.0	—	+3000	—	—	RNAV 1

**IAF MATAM, INITIAL APPROACH**

Serial Number	Path Descriptor	Waypoint Identifier	Fly-over	Course/Track °M(°T)	Magnetic Variation	Distance (NM)/ Time	Turn Direction	Altitude (FT)/ Flight level	Speed (KT)	VPA/TCH	Navigation Specification
001	IF	MATAM	—	—	-7.5	—	—	+4000	-230	—	RNAV 1
002	TF	KA352	—	055(062.1)	-7.5	5.8	—	+3000	—	—	RNAV 1

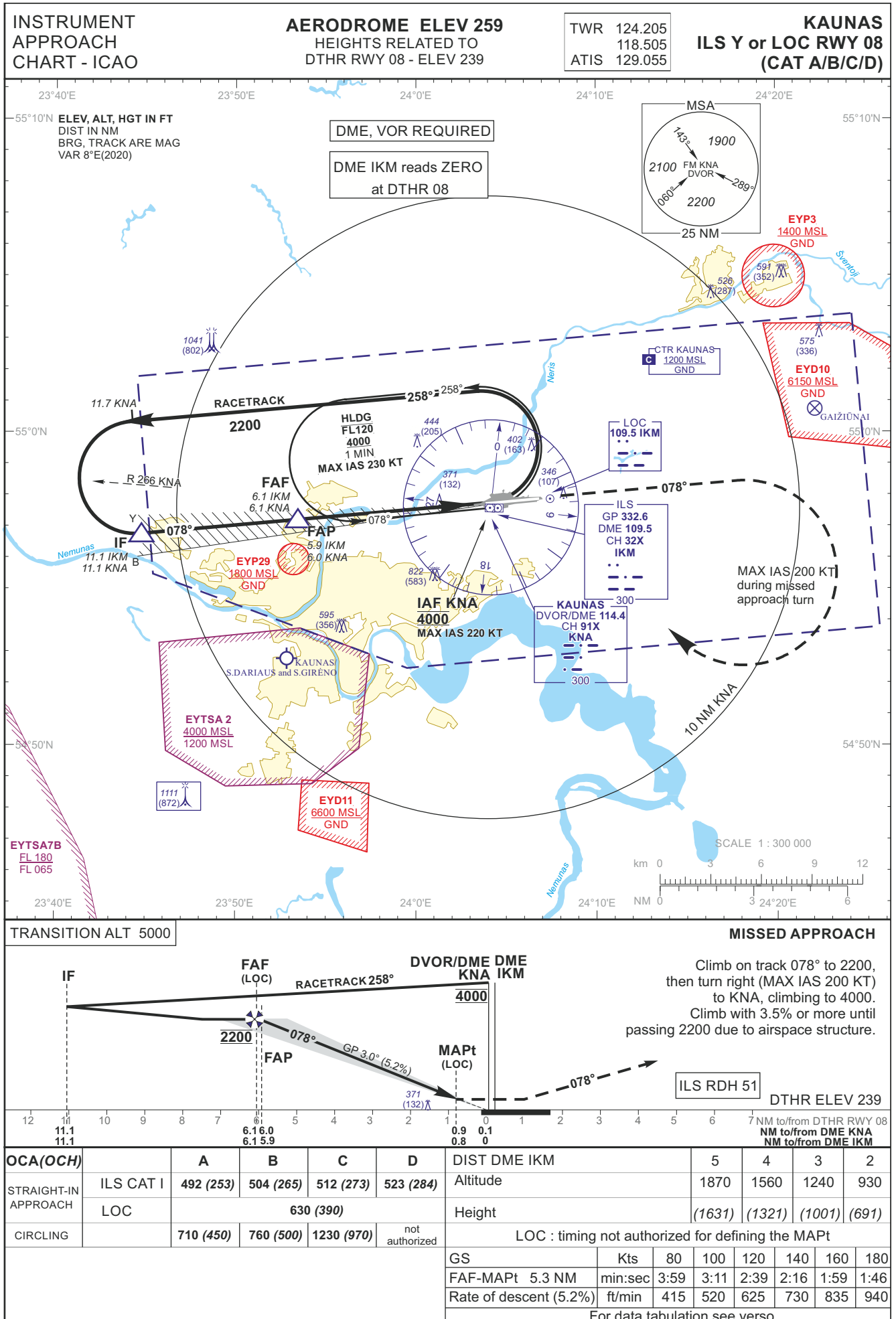
**IAF VEBUS, INITIAL APPROACH**

Serial Number	Path Descriptor	Waypoint Identifier	Fly-over	Course/Track °M(°T)	Magnetic Variation	Distance (NM)/ Time	Turn Direction	Altitude (FT)/ Flight level	Speed (KT)	VPA/TCH	Navigation Specification
001	IF	VEBUS	—	—	-7.5	—	—	+4000	-230	—	RNAV 1
002	TF	KA352	—	149(156.5)	-7.5	5.9	—	+3000	—	—	RNAV 1

**MISSED APPROACH**

001	—	RW08	—	—	-7.5	—	—	—	—	—	RNAV 1
002	CF	KA353	Y	078(085.27)	-7.5	8.60	—	—	-200	—	RNAV 1
003	DF	KNA	—	—	-7.5	—	R	@4000	-220	—	RNAV 1

FIX/POINTS	COORDINATES	FIX FORMATION
MATAM (IAF)	54 54 08.9N 023 37 22.7E	
VEBUS (IAF)	55 02 19.2N 023 42 11.7E	
KNA (IAF)	54 57 37.4N 024 03 59.1E	
KA354	55 03 12.8N 023 52 27.9E	
KA355	55 02 51.2N 023 45 21.8E	
KA352 (IF)	54 56 52.8N 023 46 18.3E	10.22 NM KNA ; BRG 077.57° / 10.15 NM IKM
FAP	54 57 15.6N 023 53 38.8E	5.97 NM KNA ; BRG 077.57° / 5.90 NM IKM
RW08 (DTHR)	54 57 46.44N 024 03 50.94E	
KA353 (MATF)	54 58 29.9N 024 18 43.4E	
DME IKM	54 57 42.8N 024 0408.4E	
LOC IKM	54 57 55.25N 024 06 49.06E	



INSTRUMENT  
APPROACH  
CHART - ICAO

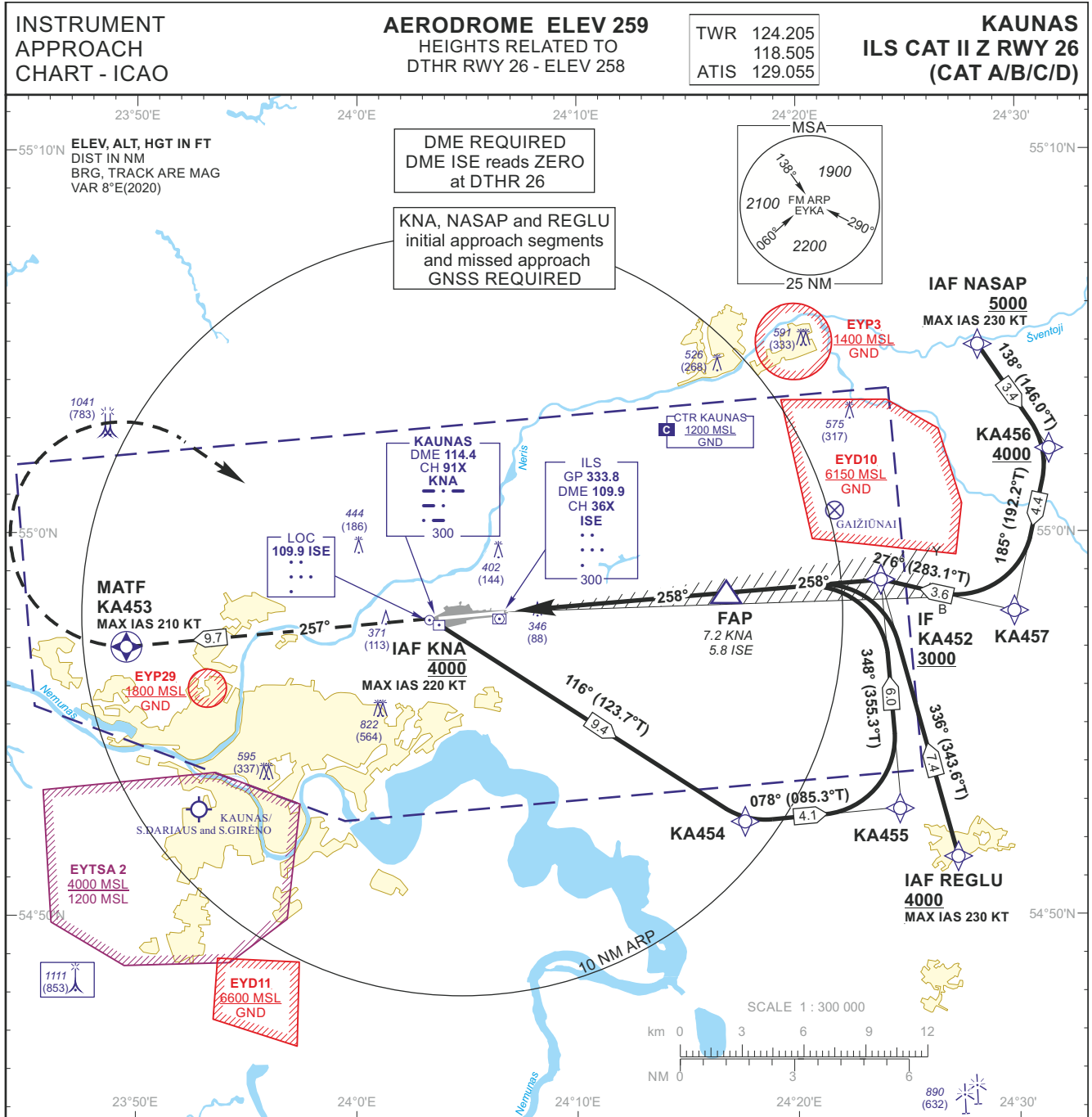
**AERODROME ELEV 259**  
HEIGHTS RELATED TO  
DTHR RWY 08 - ELEV 239

TWR	124.205
	118.505
ATIS	129.055

**KAUNAS**  
**ILS Y or LOC RWY 08**  
**(CAT A/B/C/D)**

TABULAR DESCRIPTION

ILS or LOC INSTRUMENT APPROACH from IAF(KNA)		
FIX/POINTS	COORDINATES	FIX FORMATION
KNA (IAF)	54 57 37.4N 024 03 59.1E	
IF	54 56 48.0N 023 44 45.0E	11.12 NM KNA ; BRG 077.57° / 11.06 NM IKM
FAF	54 57 14.8N 023 53 23.4E	6.12 NM KNA ; BRG 077.57° / 6.05 NM IKM
FAP	54 57 15.6N 023 53 38.8E	5.97 NM KNA ; BRG 077.57° / 5.90 NM IKM
MAPt	54 57 42.3N 024 02 28.0E	0.88 NM KNA ; BRG 077.57° / 0.80 NM IKM
DTHR RWY 08	54 57 46.44N 024 03 50.94E	
DME IKM	54 57 42.8N 024 04 08.4E	
LOC IKM	54 57 55.25N 024 06 49.06E	
Final approach (LOC) descent angle: 3.00°		



**MISSED APPROACH** TRANSITION ALT 5000

Climb on course 257° to KA453, then turn right [K210-], direct to IAF KNA climbing to 4000.

ILS RDH 52

DTHR ELEV 258

NM to/from DTHR RWY 26	7	6	5	4	3	2	1	0	1	2	3	4	5	6	7	8	9	10	11	12
NM to/from DME KNA								0	1.4											
NM to/from DME ISE																				

<b>OCA(OCH)</b>		<b>A</b>	<b>B</b>	<b>C</b>	<b>D</b>	<b>DIST DME ISE</b>	5	4	3	2
STRAIGHT-IN APPROACH	ILS CAT II	408 (150)	425 (167)	436 (178)	451 (193)	Altitude	1890	1580	1260	950
	ILS CAT I	496 (238)	508 (250)	516 (258)	526 (268)	Height	(1632)	(1322)	(1002)	(692)
CIRCLING		710 (450)	760 (500)	1230 (970)	not authorized					

GS	Kts	80	100	120	140	160	180
FAP-DTHR 5.8 NM	min:sec	4:21	3:29	2:54	2:29	2:11	1:56
Rate of descent (5.2%)	ft/min	415	520	625	730	835	940

For data tabulation see verso

INSTRUMENT  
APPROACH  
CHART - ICAO

**AERODROME ELEV 259**  
HEIGHTS RELATED TO  
DTHR RWY 26 - ELEV 258

TWR	124.205
	118.505
ATIS	129.055

**KAUNAS**  
**ILS CAT II Z RWY 26**  
**(CAT A/B/C/D)**

TABULAR DESCRIPTION

**IAF KNA, INITIAL APPROACH**

Serial Number	Path Descriptor	Waypoint Identifier	Fly-over	Course/Track °M(°T)	Magnetic Variation	Distance (NM)/ Time	Turn Direction	Altitude (FT)/ Flight level	Speed (KT)	VPA/TCH	Navigation Specification
001	IF	KNA	—	—	-7.5	—	—	@4000	-220	—	RNAV 1
002	TF	KA454	—	116(123.7)	-7.5	9.4	—	—	—	—	RNAV 1
003	TF	KA455	—	078(085.3)	-7.5	4.1	—	—	—	—	RNAV 1
004	TF	KA452	—	348(355.3)	-7.5	6.0	—	+3000	—	—	RNAV 1

**IAF NASAP, INITIAL APPROACH**

Serial Number	Path Descriptor	Waypoint Identifier	Fly-over	Course/Track °M(°T)	Magnetic Variation	Distance (NM)/ Time	Turn Direction	Altitude (FT)/ Flight level	Speed (KT)	VPA/TCH	Navigation Specification
001	IF	NASAP	—	—	-7.5	—	—	+5000	-230	—	RNAV 1
002	TF	KA456	—	138(146.0)	-7.5	3.4	—	+4000	—	—	RNAV 1
003	TF	KA457	—	185(192.2)	-7.5	4.4	—	—	—	—	RNAV 1
004	TF	KA452	—	276(283.1)	-7.5	3.6	—	+3000	—	—	RNAV 1

**IAF REGLU, INITIAL APPROACH**

Serial Number	Path Descriptor	Waypoint Identifier	Fly-over	Course/Track °M(°T)	Magnetic Variation	Distance (NM)/ Time	Turn Direction	Altitude (FT)/ Flight level	Speed (KT)	VPA/TCH	Navigation Specification
001	IF	REGLU	—	—	-7.5	—	—	+4000	-230	—	RNAV 1
002	TF	KA452	—	336(343.6)	-7.5	7.4	—	+3000	—	—	RNAV 1

**MISSED APPROACH**

001	—	RW26	—	—	-7.5	—	—	—	—	—	RNAV 1
002	CF	KA453	Y	257(264.87)	-7.5	9.7	—	—	-210	—	RNAV 1
003	DF	KNA	—	—	-7.5	—	R	@4000	-220	—	RNAV 1

FIX/POINTS	COORDINATES	FIX FORMATION
NASAP (IAF)	55 04 57.2N 024 28 10.6E	
REGLU (IAF)	54 51 37.2N 024 27 23.7E	
KNA (IAF)	54 57 37.4N 024 03 59.1E	
KA454	54 52 26.0N 024 17 33.7E	
KA455	54 52 46.2N 024 24 37.3E	
KA456	55 02 09.7N 024 31 27.3E	
KA457	54 57 55.1N 024 29 51.4E	
KA452 (IF)	54 58 44.2N 024 23 46.4E	11.46 NM KNA ; BRG 257.53° / 10.09 NM ISE
FAP	54 58 23.3N 024 16 25.6E	7.21 NM KNA ; BRG 257.53° / 5.84 NM ISE
RW26 (DTHR)	54 57 53.79N 024 06 19.46E	
KA453 (MATF)	54 57 03.0N 023 49 33.4E	
DME ISE	54 57 49.0N 024 06 00.1E	
LOC ISE	54 57 44.97N 024 03 21.54E	

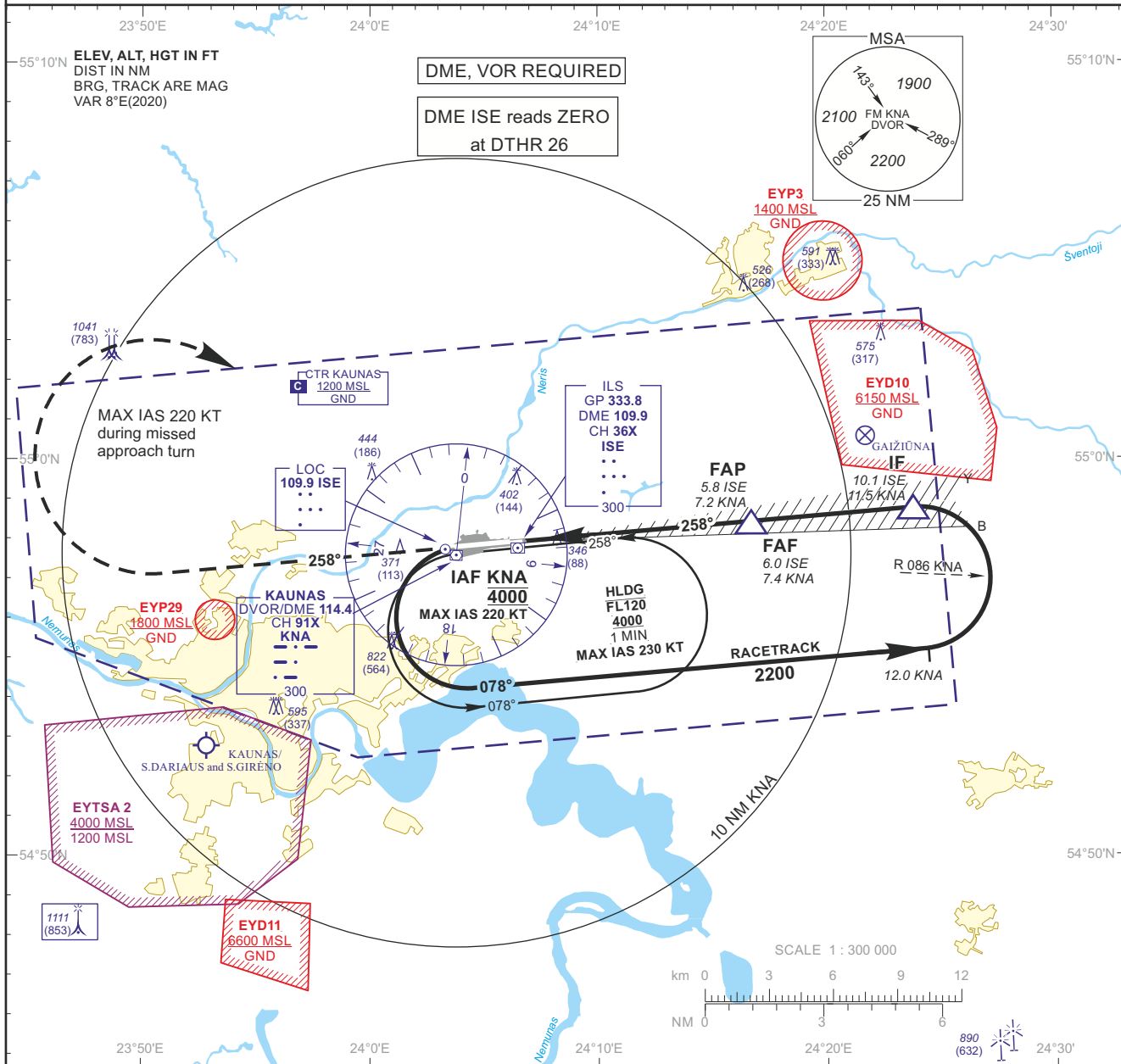


**INSTRUMENT APPROACH CHART - ICAO**

**AERODROME ELEV 259**  
 HEIGHTS RELATED TO  
 DTHR RWY 26 - ELEV 258

TWR 124.205  
 ATIS 118.505  
 129.055

**KAUNAS ILS CAT II Y or LOC RWY 26 (CAT A/B/C/D)**

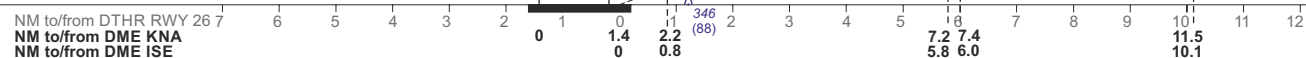


**MISSED APPROACH**

Climb on track 258° to 2200, then turn right (MAX IAS 220 KT) to KNA, climbing to 4000. Climb with 3.5% or more until passing 2200 due to airspace structure.

ILS RDH 52

DTHR ELEV 258



OCA(OCH)		A	B	C	D	DIST DME ISE								
STRAIGHT-IN APPROACH	ILS CAT II	408 (150)	425 (167)	436 (178)	451 (193)	Altitude								
	ILS CAT I	496 (238)	508 (250)	516 (258)	526 (268)	Height								
	LOC	620 (360)				LOC : timing not authorized for defining the MAPt								
CIRCLING		710 (450)	760 (500)	1230 (970)	not authorized	GS	Kts	80	100	120	140	160	180	
						FAP-MAPt	5.1 NM	min:sec	3:49	3:03	2:33	2:11	1:55	1:42
						Rate of descent (5.2%)	ft/min	415	520	625	730	835	940	

For data tabulation see verso

INSTRUMENT  
APPROACH  
CHART - ICAO

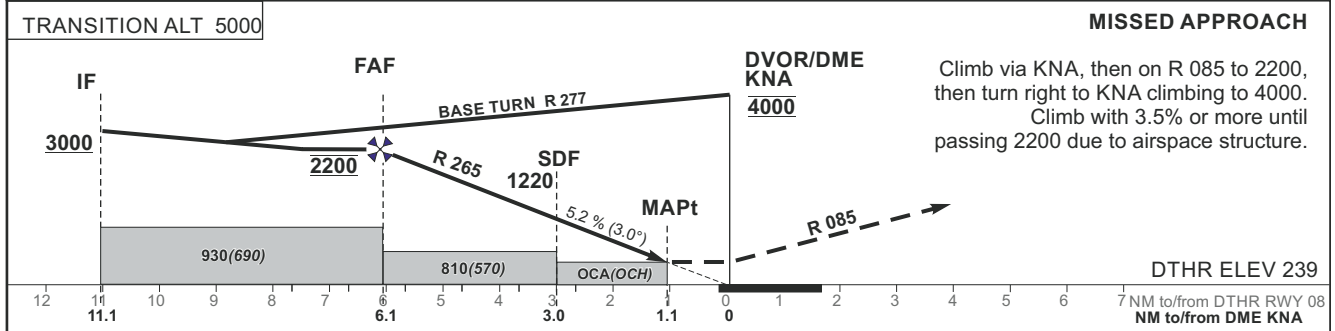
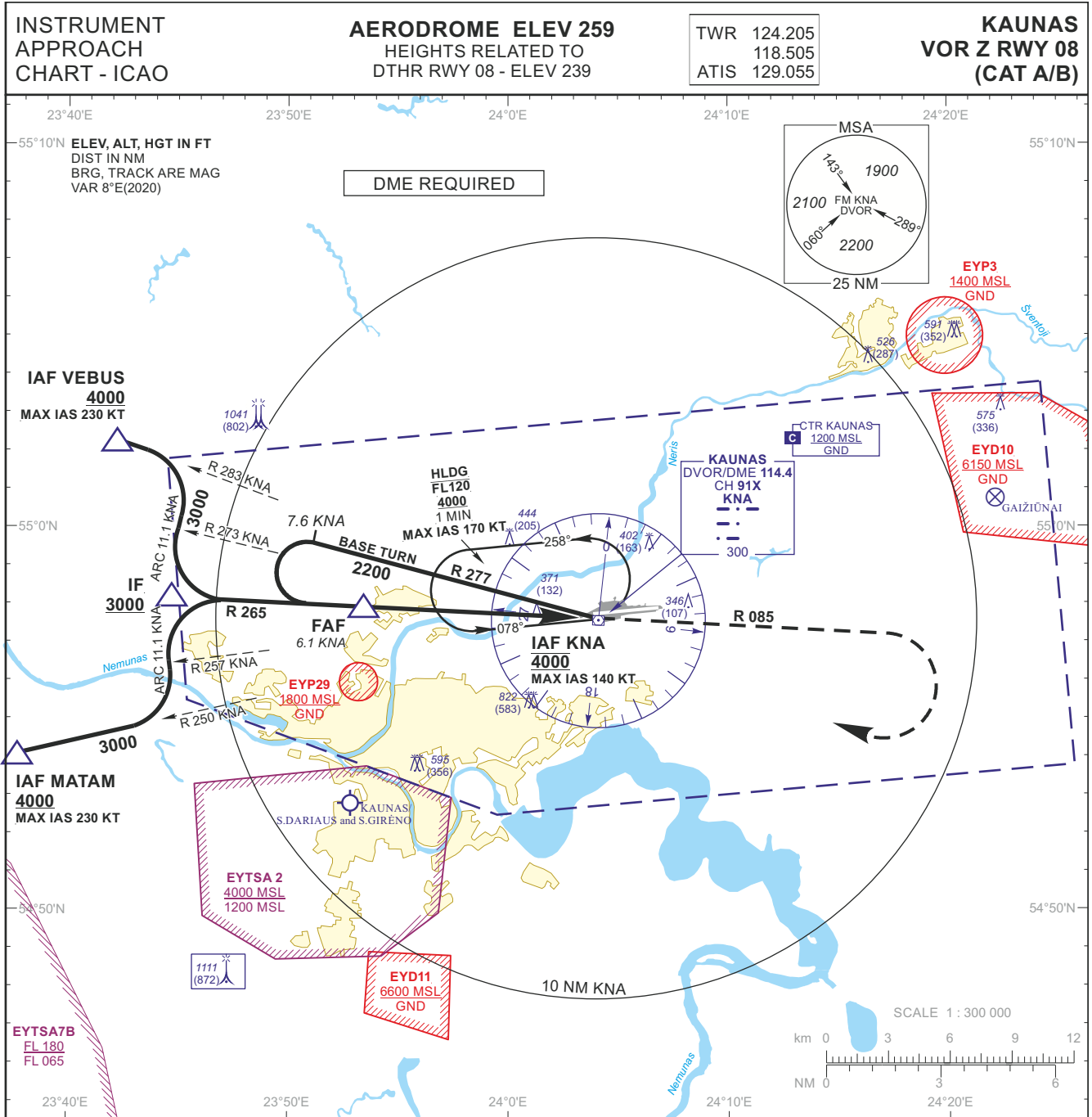
**AERODROME ELEV 259**  
HEIGHTS RELATED TO  
DTHR RWY 26 - ELEV 258

TWR	124.205
	118.505
ATIS	129.055

**KAUNAS**  
**ILS CAT II Y or LOC**  
**RWY 26 (CAT A/B/C/D)**

TABULAR DESCRIPTION

ILS or LOC INSTRUMENT APPROACH from IAF(KNA)		
FIX/POINTS	COORDINATES	FIX FORMATION
KNA (IAF)	54 57 37.4N 024 03 59.1E	
IF	54 58 44.2N 024 23 46.4E	11.46 NM KNA ; BRG 257.53° / 10.09 NM ISE
FAF	54 58 24.0N 024 16 41.1E	7.36 NM KNA ; BRG 257.53° / 5.99 NM ISE
FAP	54 58 23.3N 024 16 25.6E	7.21 NM KNA ; BRG 257.53° / 5.84 NM ISE
MAPt	54 57 57.9N 024 07 42.5E	2.17 NM KNA ; BRG 257.53° / 0.80 NM ISE
DTHR RWY 26	54 57 53.79N 024 06 19.46E	
DME ISE	54 57 49.0N 024 06 00.1E	
LOC ISE	54 57 44.97N 024 03 21.54E	
Final approach (LOC) descent angle: 3.00°		



OCA(OCH)	A	B	DIST DME KNA	5	4	3	2	
STRAIGHT-IN APPROACH	VOR	780 (540)	Altitude	1850	1530	1220	900	
	VOR (when SDF not received)	810 (570)	Height	(1611)	(1291)	(981)	(661)	
CIRCLING	710 (450)	760 (500)	Timing not authorized for defining the MAPt					
	GS	Kts	80	100	120	140	160	180
	FAF-MAPt 5.0 NM	min:sec	3:45	3:00	2:30	2:09	1:53	1:40
	Rate of descent (5.2%)	ft/min	415	520	625	730	835	940
For data tabulation see verso								

INSTRUMENT  
APPROACH  
CHART - ICAO

**AERODROME ELEV 259**  
HEIGHTS RELATED TO  
DTHR RWY 08 - ELEV 239

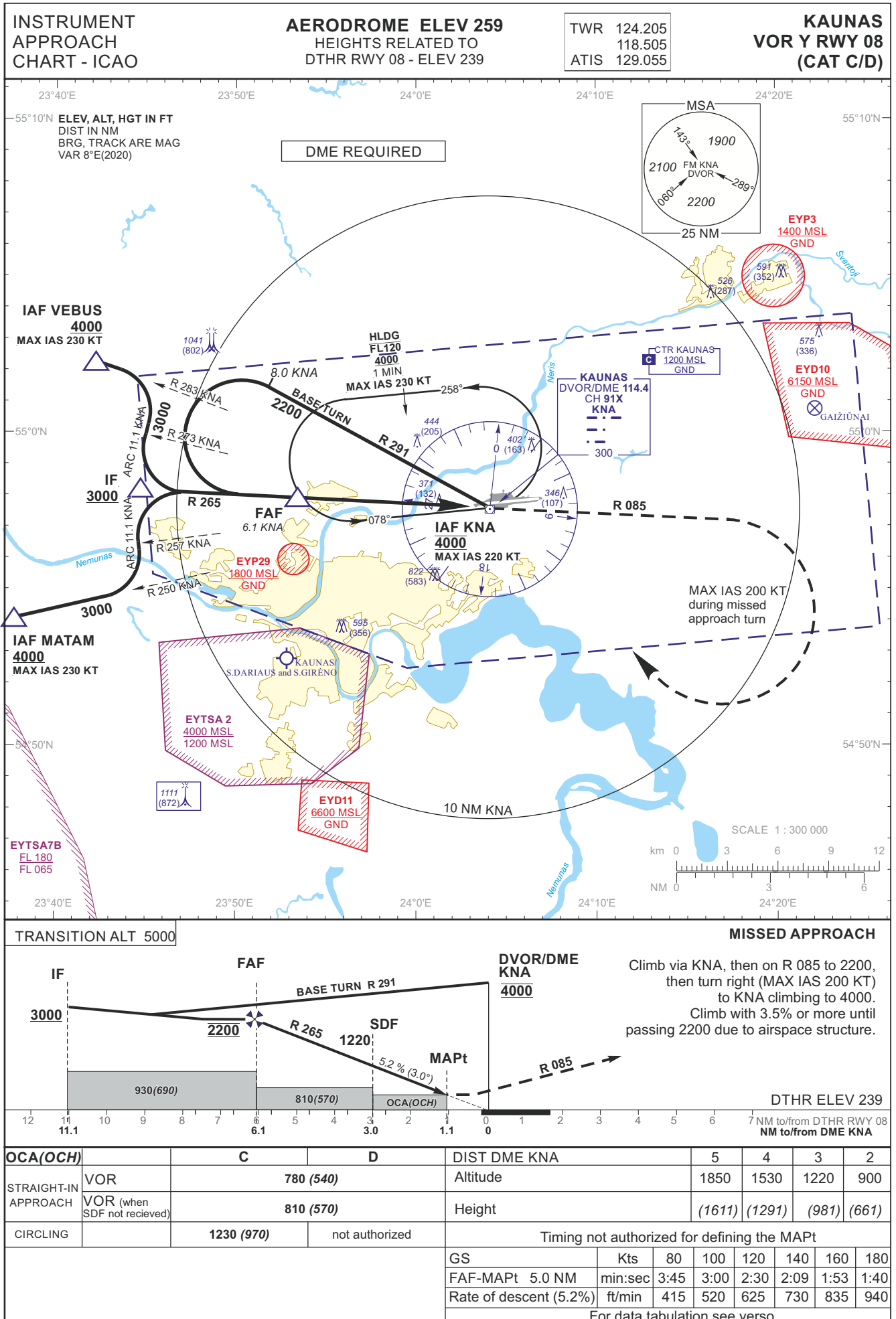
TWR	124.205
	118.505
ATIS	129.055

**KAUNAS**  
**VOR Z RWY 08**  
**(CAT A/B)**

TABULAR DESCRIPTION

VOR INSTRUMENT APPROACH from IAFs(KNA, MATAM, VEBUS)

FIX/POINTS	COORDINATES	FIX FORMATION
MATAM (IAF)	54 54 08.9N 023 37 22.7E	BRG 069.87° / 15.74 NM KNA
VEBUS (IAF)	55 02 19.2N 023 42 11.7E	BRG 103.17° / 13.40 NM KNA
KNA (IAF)	54 57 37.4N 024 03 59.1E	
IF	54 58 10.8N 023 44 41.9E	BRG 085.47° / 11.13 NM KNA
FAF	54 57 56.2N 023 53 22.0E	BRG 085.47° / 6.13 NM KNA
SDF	54 57 46.7N 023 58 47.8E	BRG 085.47° / 3.00 NM KNA
MAPt	54 57 41.0N 024 02 00.9E	BRG 085.47° / 1.14 NM KNA
DTHR RWY 08	54 57 46.44N 024 03 50.94E	
Final approach descent angle: 3.00°		



INSTRUMENT  
APPROACH  
CHART - ICAO

**AERODROME ELEV 259**  
HEIGHTS RELATED TO  
DTHR RWY 08 - ELEV 239

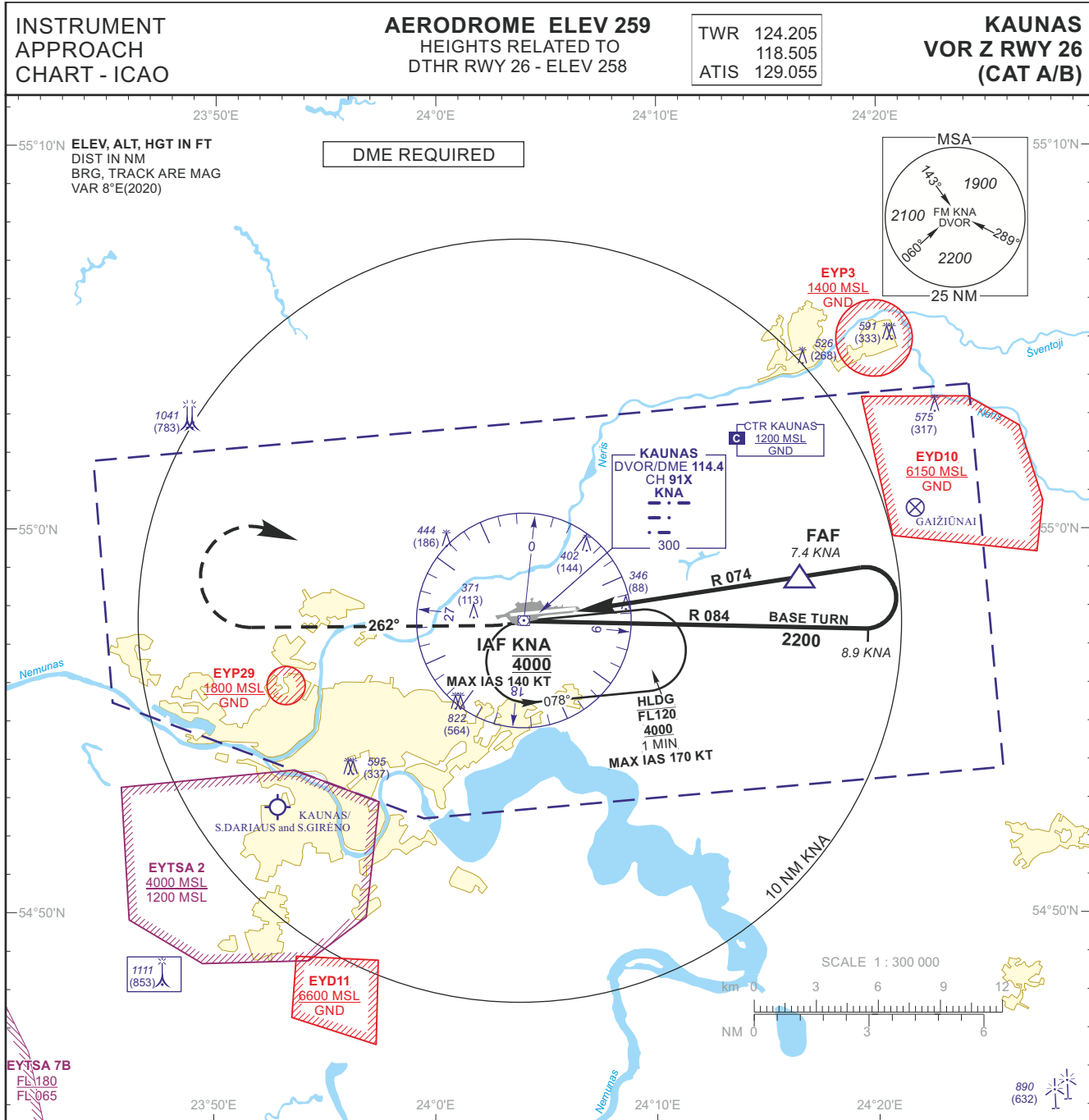
TWR	124.205
	118.505
ATIS	129.055

**KAUNAS**  
**VOR Y RWY 08**  
**(CAT C/D)**

TABULAR DESCRIPTION

VOR INSTRUMENT APPROACH from IAFs(KNA, MATAM, VEBUS)

FIX/POINTS	COORDINATES	FIX FORMATION
MATAM (IAF)	54 54 08.9N 023 37 22.7E	BRG 069.87° / 15.74 NM KNA
VEBUS (IAF)	55 02 19.2N 023 42 11.7E	BRG 103.17° / 13.40 NM KNA
KNA (IAF)	54 57 37.4N 024 03 59.1E	
IF	54 58 10.8N 023 44 41.9E	BRG 085.47° / 11.13 NM KNA
FAF	54 57 56.2N 023 53 22.0E	BRG 085.47° / 6.13 NM KNA
SDF	54 57 46.7N 023 58 47.8E	BRG 085.47° / 3.00 NM KNA
MAPt	54 57 41.0N 024 02 00.9E	BRG 085.47° / 1.14 NM KNA
DTHR RWY 08	54 57 46.44N 024 03 50.94E	
Final approach descent angle: 3.00°		



**MISSED APPROACH**

Climb via KNA, then turn right on track 262° to 2200, then turn right to KNA climbing to 4000. Climb with 3.5% or more until passing 2200 due to airspace structure.

DTHR ELEV 258

TRANSITION ALT 5000

Scale: 1:300,000

OCA(OCH)		A	B	DIST DME KNA								
STRAIGHT-IN APPROACH	VOR	630 (370)		7	6	5	4	3				
	VOR (when SDF not received)	660 (400)										
CIRCLING		710 (450)	760 (500)	Timing not authorized for defining the MAPt								
				GS	Kts	80	100	120	140	160	180	
				FAF-MAPt	5.2 NM	min:sec	3:54	3:07	2:36	2:14	1:57	1:44
				Rate of descent (5.2%)	ft/min	415	520	625	730	835	940	

For data tabulation see verso

INSTRUMENT  
APPROACH  
CHART - ICAO

**AERODROME ELEV 259**  
HEIGHTS RELATED TO  
DTHR RWY 26 - ELEV 258

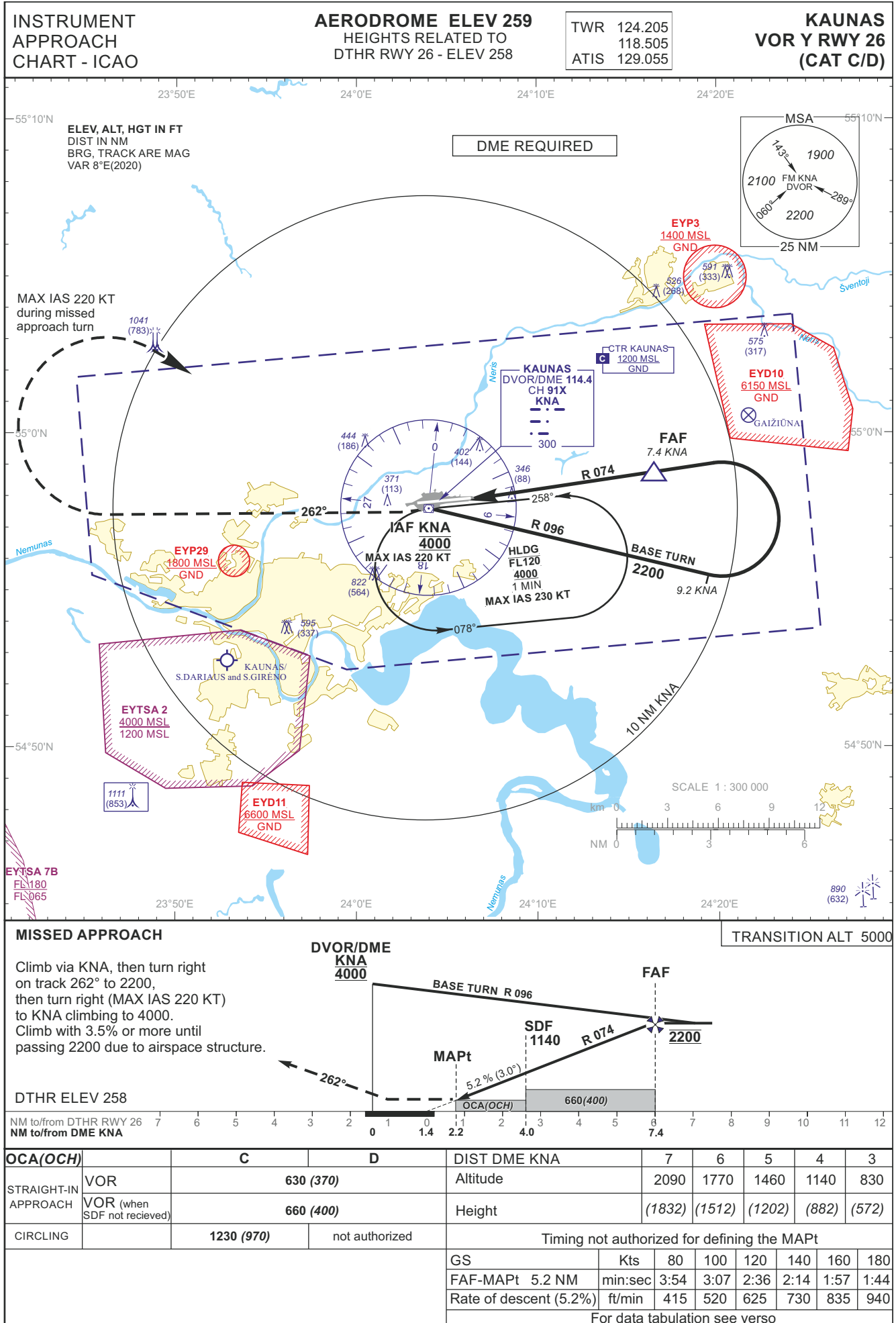
TWR	124.205
	118.505
ATIS	129.055

**KAUNAS**  
**VOR Z RWY 26**  
**(CAT A/B)**

TABULAR DESCRIPTION

VOR INSTRUMENT APPROACH from IAF(KNA)		
FIX/POINTS	COORDINATES	FIX FORMATION
KNA (IAF)	54 57 37.4N 024 03 59.1E	
FAF	54 58 45.8N 024 16 36.6E	BRG 253.47° / 7.37 NM KNA
SDF	54 58 14.8N 024 10 51.4E	BRG 253.47° / 4.00 NM KNA
MAPt	54 57 58.2N 024 07 47.7E	BRG 253.47° / 2.22 NM KNA
DTHR RWY 26	54 57 53.79N 024 06 19.46E	
Final approach descent angle: 3.00°		





INSTRUMENT  
APPROACH  
CHART - ICAO

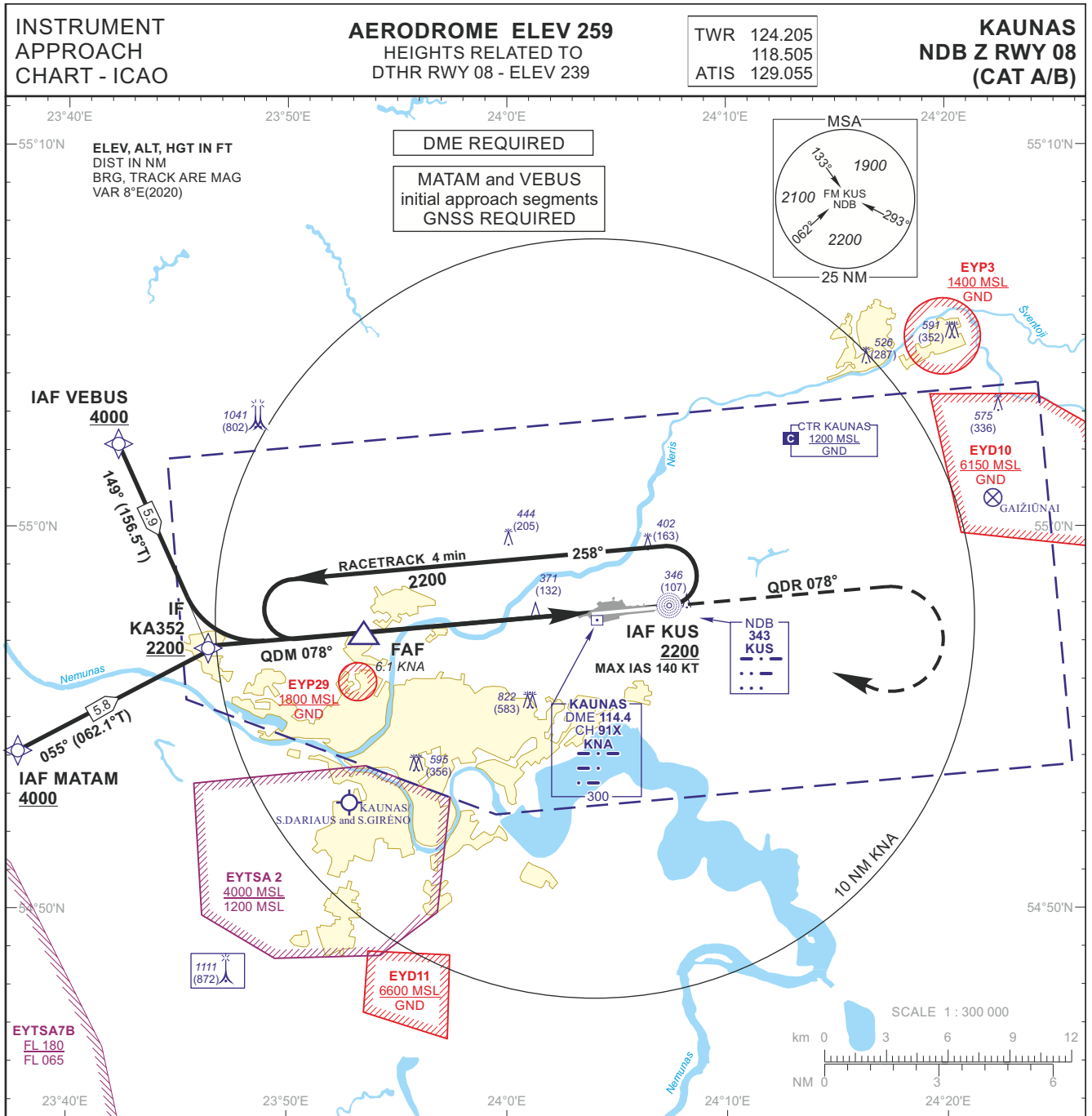
**AERODROME ELEV 259**  
HEIGHTS RELATED TO  
DTHR RWY 26 - ELEV 258

TWR	124.205
	118.505
ATIS	129.055

**KAUNAS**  
**VOR Y RWY 26**  
**(CAT C/D)**

TABULAR DESCRIPTION

VOR INSTRUMENT APPROACH from IAF(KNA)		
FIX/POINTS	COORDINATES	FIX FORMATION
KNA (IAF)	54 57 37.4N 024 03 59.1E	
FAF	54 58 45.8N 024 16 36.6E	BRG 253.47° / 7.37 NM KNA
SDF	54 58 14.8N 024 10 51.4E	BRG 253.47° / 4.00 NM KNA
MAPt	54 57 58.2N 024 07 47.7E	BRG 253.47° / 2.22 NM KNA
DTHR RWY 26	54 57 53.79N 024 06 19.46E	
Final approach descent angle: 3.00°		



TRANSITION ALT 5000		<b>MISSED APPROACH</b>							
		IF KA352		FAF		DME KNA		NDB KUS	
		2200		2200		2200		2200	
		1000(760)		810(570)		OCA(OCH)		QDR 078°	
		10.2		6.1		3.0		1.9	
		12		11		10		9	
		8		7		6		5	
		4		3		2		1	
		0		0		0		0	
		12		11		10		9	
		8		7		6		5	
		4		3		2		1	
		0		0		0		0	
		12		11		10		9	
		8		7		6		5	
		4		3		2		1	
		0		0		0		0	
		12		11		10		9	
		8		7		6		5	
		4		3		2		1	
		0		0		0		0	
		12		11		10		9	
		8		7		6		5	
		4		3		2		1	
		0		0		0		0	
		12		11		10		9	
		8		7		6		5	
		4		3		2		1	
		0		0		0		0	
		12		11		10		9	
		8		7		6		5	
		4		3		2		1	
		0		0		0		0	
		12		11		10		9	
		8		7		6		5	
		4		3		2		1	
		0		0		0		0	
		12		11		10		9	
		8		7		6		5	
		4		3		2		1	
		0		0		0		0	
		12		11		10		9	
		8		7		6		5	
		4		3		2		1	
		0		0		0		0	
		12		11		10		9	
		8		7		6		5	
		4		3		2		1	
		0		0		0		0	
		12		11		10		9	
		8		7		6		5	
		4		3		2		1	
		0		0		0		0	
		12		11		10		9	
		8		7		6		5	
		4		3		2		1	
		0		0		0		0	
		12		11		10		9	
		8		7		6		5	
		4		3		2		1	
		0		0		0		0	
		12		11		10		9	
		8		7		6		5	
		4		3		2		1	
		0		0		0		0	
		12		11		10		9	
		8		7		6		5	
		4		3		2		1	
		0		0		0		0	
		12		11		10		9	
		8		7		6		5	
		4		3		2		1	
		0		0		0		0	
		12		11		10		9	
		8		7		6		5	
		4		3		2		1	
		0		0		0		0	
		12		11		10		9	
		8		7		6		5	
		4		3		2		1	
		0		0		0		0	
		12		11		10		9	
		8		7		6		5	
		4		3		2		1	
		0		0		0		0	
		12		11		10		9	
		8		7		6		5	
		4		3		2		1	
		0		0		0		0	
		12		11		10		9	
		8		7		6		5	
		4		3		2		1	
		0		0		0		0	
		12		11		10		9	
		8		7		6		5	
		4		3		2		1	
		0		0		0		0	
		12		11		10		9	
		8		7		6		5	
		4		3		2		1	
		0		0		0		0	
		12		11		10		9	
		8		7		6		5	
		4		3		2		1	
		0		0		0		0	
		12		11		10		9	
		8		7		6		5	
		4		3		2		1	
		0		0		0		0	
		12		11		10		9	
		8		7		6		5	
		4		3		2		1	
		0		0		0		0	
		12		11		10		9	
		8		7		6		5	
		4		3		2		1	
		0		0		0		0	
		12		11		10		9	
		8		7		6		5	
		4		3		2		1	
		0		0		0		0	
		12		11		10		9	
		8		7		6		5	
		4		3		2		1	
		0		0		0		0	
		12		11		10		9	
		8		7		6		5	
		4		3		2		1	
		0		0		0		0	
		12		11		10		9	
		8		7		6		5	
		4		3		2		1	
		0		0		0		0	
		12		11		10		9	
		8		7		6		5	
		4		3		2		1	
		0		0		0		0	
		12		11		10		9	
		8		7		6		5	
		4		3		2		1	
		0		0		0		0	
		12		11		10		9	
		8		7		6		5	
		4		3		2		1	
		0		0		0		0	
		12		11		10		9	
		8		7		6		5	
		4		3		2		1	
		0		0		0		0	
		12		11		10		9	
		8		7		6		5	
		4		3		2		1	
		0		0		0		0	
		12		11		10		9	
		8		7		6		5	
		4		3		2		1	
		0		0		0		0	
		12		11		10		9	
		8		7		6		5	
		4		3		2		1	
		0		0		0		0	
		12		11		10		9	
		8		7		6		5	
		4		3		2		1	
		0		0		0		0	
		12		11		10		9	
		8		7		6		5	
		4		3		2		1	
		0		0		0		0	
		12		11		10		9	
		8		7		6		5	
		4		3		2		1	
		0		0		0		0	
		12		11		10		9	
		8		7		6		5	
		4		3		2		1	
		0		0		0		0	
		12		11		10		9	
		8		7		6		5	
		4		3		2		1	
		0		0		0		0	
		12		11		10		9	
		8		7		6		5	
		4		3		2		1	
		0		0		0		0	
		12		11		10		9	
		8		7		6		5	
		4		3		2		1	
		0		0		0		0	
		12		11		10		9	
		8		7		6		5	
		4		3		2		1	
		0		0		0		0	
		12		11		10		9	
		8		7		6		5	
		4		3		2		1	
		0		0		0		0	
		12		11		10		9	
		8		7		6		5	
		4		3		2		1	
		0		0		0		0	
		12		11		10		9	
		8		7		6		5	
		4		3		2		1	
		0		0		0		0	
		12							

INSTRUMENT  
APPROACH  
CHART - ICAO

**AERODROME ELEV 259**  
HEIGHTS RELATED TO  
DTHR RWY 08 - ELEV 239

TWR	124.205
	118.505
ATIS	129.055

**KAUNAS**  
**NDB Z RWY 08**  
**(CAT A/B)**

TABULAR DESCRIPTION

**IAF MATAM, INITIAL APPROACH**

Serial Number	Path Descriptor	Waypoint Identifier	Fly-over	Course/Track °M(°T)	Magnetic Variation	Distance (NM)/ Time	Turn Direction	Altitude (FT)/ Flight level	Speed (KT)	VPA/TCH	Navigation Specification
001	IF	MATAM	—	—	-7.5	—	—	+4000	—	—	RNAV 1
002	TF	KA352	—	055(062.1)	-7.5	5.8	—	+2200	—	—	RNAV 1

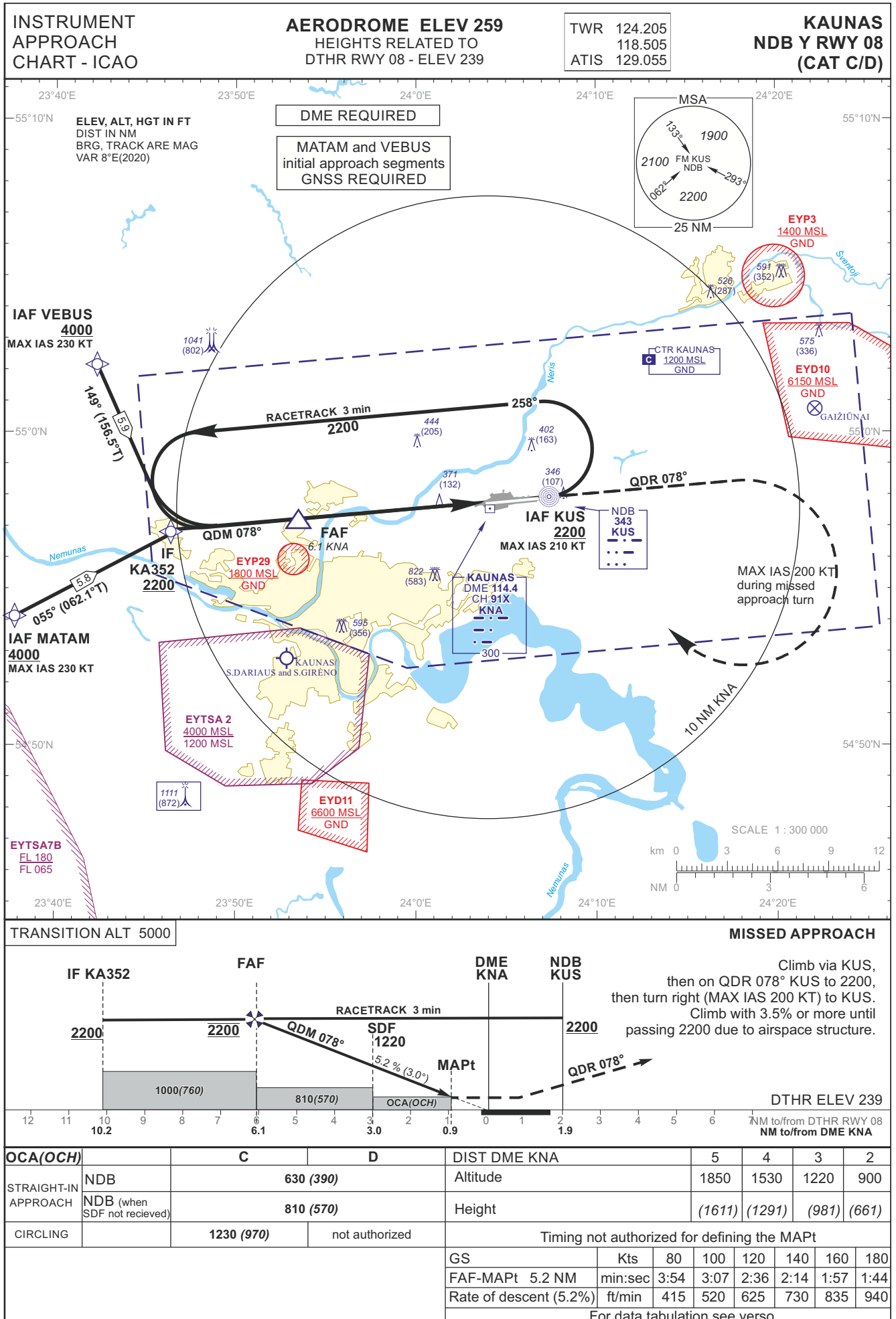
**IAF VEBUS, INITIAL APPROACH**

Serial Number	Path Descriptor	Waypoint Identifier	Fly-over	Course/Track °M(°T)	Magnetic Variation	Distance (NM)/ Time	Turn Direction	Altitude (FT)/ Flight level	Speed (KT)	VPA/TCH	Navigation Specification
001	IF	VEBUS	—	—	-7.5	—	—	+4000	—	—	RNAV 1
002	TF	KA352	—	149(156.5)	-7.5	5.9	—	+2200	—	—	RNAV 1

**NDB INSTRUMENT APPROACH from IAFs(KUS, MATAM, VEBUS)**

FIX/POINTS	COORDINATES	FIX FORMATION
MATAM (IAF)	54 54 08.9N 023 37 22.7E	BRG 070.25° KUS / 15.74 NM KNA
VEBUS (IAF)	55 02 19.2N 023 42 11.7E	BRG 099.50° KUS / 13.40 NM KNA
KUS (IAF)	54 57 56.6N 024 07 18.7E	1.94 NM KNA
KA352 (IF)	54 56 52.8N 023 46 18.3E	BRG 077.59° KUS / 10.22 NM KNA
FAF	54 57 14.9N 023 53 23.4E	BRG 077.61° KUS / 6.12 NM KNA
SDF	54 57 31.4N 023 58 48.3E	BRG 077.61° KUS / 3.00 NM KNA
MAPt	54 57 42.3N 024 02 28.0E	BRG 077.61° KUS / 0.88NM KNA
DTHR RWY 08	54 57 46.44N 024 03 50.94E	
KNA	54 57 37.4N 024 03 59.1E	

Final approach descent angle: 3.00°



**INSTRUMENT  
APPROACH  
CHART - ICAO**

**AERODROME ELEV 259**  
HEIGHTS RELATED TO  
DTHR RWY 08 - ELEV 239

TWR	124.205
	118.505
ATIS	129.055

**KAUNAS  
NDB Y RWY 08  
(CAT C/D)**

**TABULAR DESCRIPTION**

**IAF MATAM, INITIAL APPROACH**

Serial Number	Path Descriptor	Waypoint Identifier	Fly-over	Course/Track °M(°T)	Magnetic Variation	Distance (NM)/ Time	Turn Direction	Altitude (FT)/ Flight level	Speed (KT)	VPA/TCH	Navigation Specification
001	IF	MATAM	—	—	-7.5	—	—	+4000	-230	—	RNAV 1
002	TF	KA352	—	055(062.1)	-7.5	5.8	—	+2200	—	—	RNAV 1

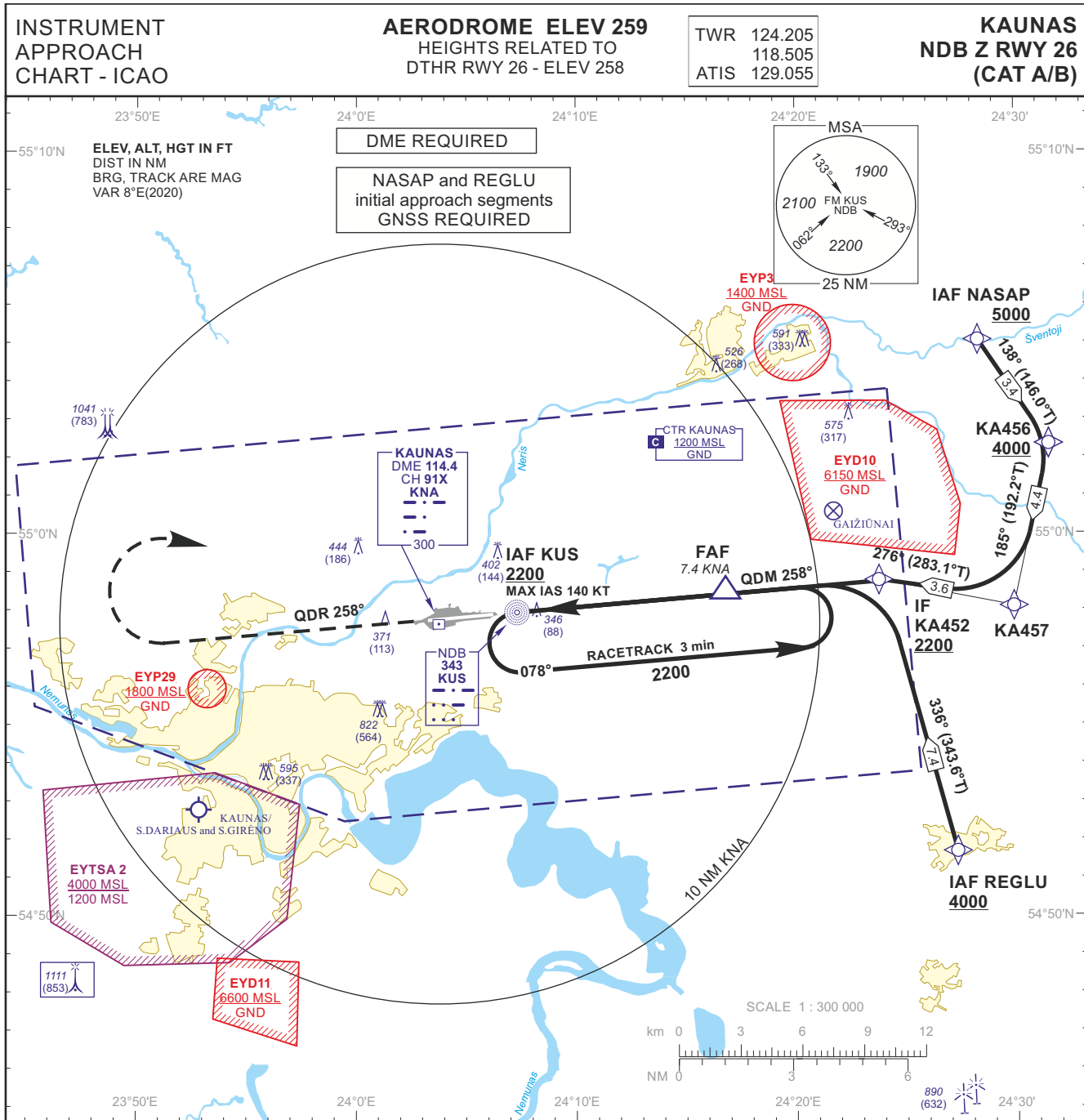
**IAF VEBUS, INITIAL APPROACH**

Serial Number	Path Descriptor	Waypoint Identifier	Fly-over	Course/Track °M(°T)	Magnetic Variation	Distance (NM)/ Time	Turn Direction	Altitude (FT)/ Flight level	Speed (KT)	VPA/TCH	Navigation Specification
001	IF	VEBUS	—	—	-7.5	—	—	+4000	-230	—	RNAV 1
002	TF	KA352	—	149(156.5)	-7.5	5.9	—	+2200	—	—	RNAV 1

**NDB INSTRUMENT APPROACH from IAFs(KUS, MATAM, VEBUS)**

FIX/POINTS	COORDINATES	FIX FORMATION
MATAM (IAF)	54 54 08.9N 023 37 22.7E	BRG 070.25° KUS / 15.74 NM KNA
VEBUS (IAF)	55 02 19.2N 023 42 11.7E	BRG 099.50° KUS / 13.40 NM KNA
KUS (IAF)	54 57 56.6N 024 07 18.7E	1.94 NM KNA
KA352 (IF)	54 56 52.8N 023 46 18.3E	BRG 077.59° KUS / 10.22 NM KNA
FAF	54 57 14.9N 023 53 23.4E	BRG 077.61° KUS / 6.12 NM KNA
SDF	54 57 31.4N 023 58 48.3E	BRG 077.61° KUS / 3.00 NM KNA
MAPt	54 57 42.3N 024 02 28.0E	BRG 077.61° KUS / 0.88NM KNA
DTHR RWY 08	54 57 46.44N 024 03 50.94E	
KNA	54 57 37.4N 024 03 59.1E	

Final approach descent angle: 3.00°



**MISSED APPROACH**

Climb on QDR 258° KUS to 2200, then turn right to KUS. Climb with 3.5% or more until passing 2200 due to airspace structure.

**TRANSITION ALT 5000**

	DME KNA	NDB KUS	FAF	IF KA452
MAPt	0	1.9	7.4	11.5
SDF		1140		
QDR 258°		5.2% (3.0°)		
OCA(OCH)		660(400)	680(420)	

OCA(OCH)	STRAIGHT-IN APPROACH			DIST DME KNA								
		A	B	7	6	5	4	3				
NDB	NDB	630 (370)		2090	1770	1460	1140	830				
	NDB (when SDF not received)	660 (400)		(1832)	(1512)	(1202)	(882)	(572)				
CIRCLING		710 (450)	760 (500)	Timing not authorized for defining the MAPt								
				GS	Kts	80	100	120	140	160	180	
				FAF-MAPt	5.4 NM	min:sec	4:03	3:14	2:42	2:19	2:02	1:48
				Rate of descent (5.2%)	ft/min	415	520	625	730	835	940	

For data tabulation see verso

INSTRUMENT  
APPROACH  
CHART - ICAO

**AERODROME ELEV 259**  
HEIGHTS RELATED TO  
DTHR RWY 26 - ELEV 258

TWR	124.205
	118.505
ATIS	129.055

**KAUNAS**  
**NDB Z RWY 26**  
**(CAT A/B)**

TABULAR DESCRIPTION

**IAF NASAP, INITIAL APPROACH**

Serial Number	Path Descriptor	Waypoint Identifier	Fly-over	Course/Track °M(°T)	Magnetic Variation	Distance (NM)/ Time	Turn Direction	Altitude (FT)/ Flight level	Speed (KT)	VPA/TCH	Navigation Specification
001	IF	NASAP	—	—	-7.5	—	—	+5000	—	—	RNAV 1
002	TF	KA456	—	138(146.0)	-7.5	3.4	—	+4000	—	—	RNAV 1
003	TF	KA457	—	185(192.2)	-7.5	4.4	—	—	—	—	RNAV 1
004	TF	KA452	—	276(283.1)	-7.5	3.6	—	+2200	—	—	RNAV 1

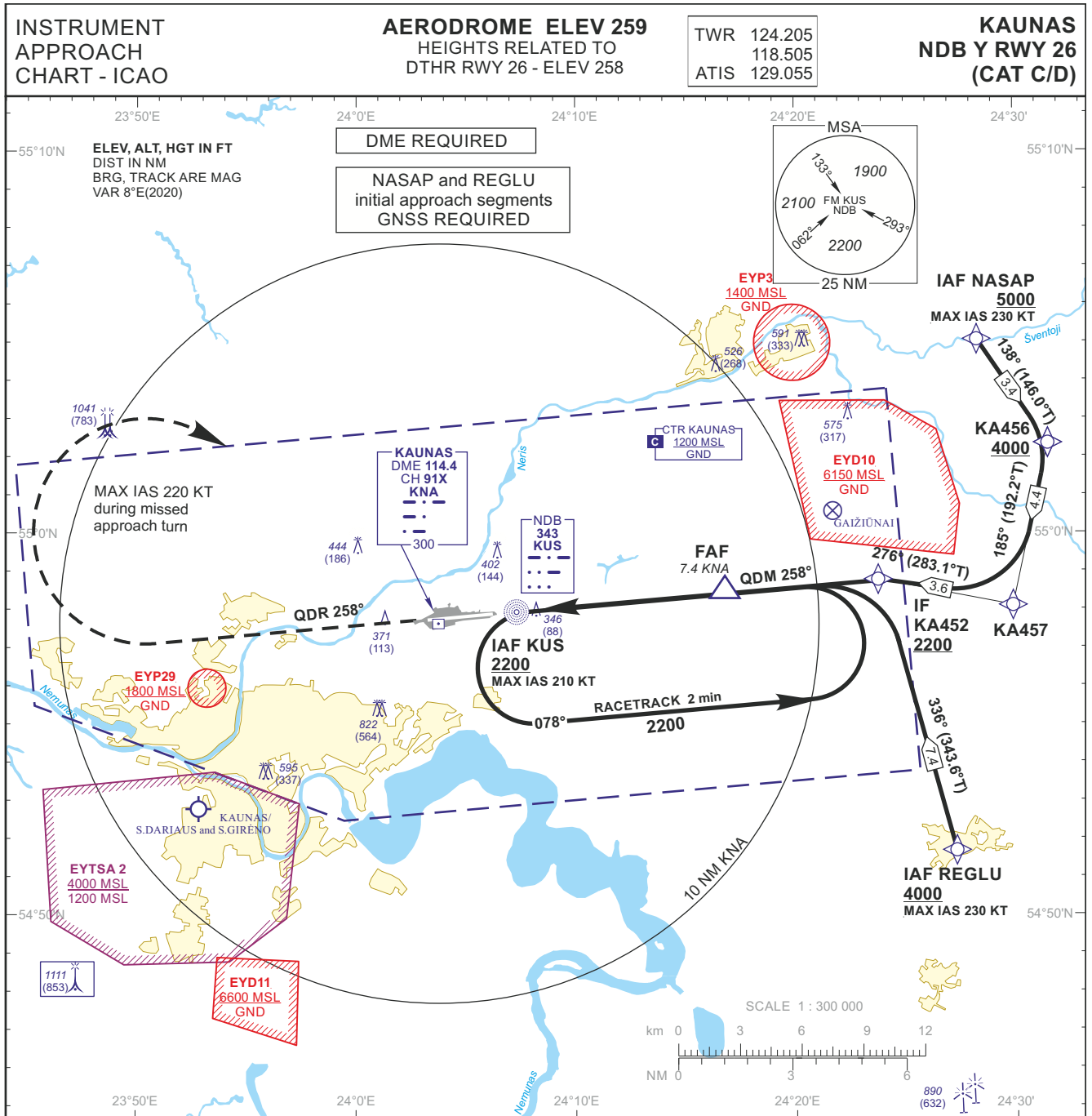
**IAF REGLU, INITIAL APPROACH**

Serial Number	Path Descriptor	Waypoint Identifier	Fly-over	Course/Track °M(°T)	Magnetic Variation	Distance (NM)/ Time	Turn Direction	Altitude (FT)/ Flight level	Speed (KT)	VPA/TCH	Navigation Specification
001	IF	REGLU	—	—	-7.5	—	—	+4000	—	—	RNAV 1
002	TF	KA452	—	336(343.6)	-7.5	7.4	—	+2200	—	—	RNAV 1

**NDB INSTRUMENT APPROACH from IAFs(KUS, NASAP, REGLU)**

FIX/POINTS	COORDINATES	FIX FORMATION
NASAP (IAF)	55 04 57.2N 024 28 10.6E	BRG 232.01° KUS / 15.74 NM KNA
REGLU (IAF)	54 51 37.2N 024 27 23.7E	BRG 290.99° KUS / 14.79 NM KNA
KA456	55 02 09.7N 024 31 27.3E	BRG 245.40° KUS / 16.46 NM KNA
KA457	54 57 55.1N 024 29 51.4E	BRG 262.43° KUS / 14.92 NM KNA
KA452 (IF)	54 58 44.2N 024 23 46.4E	1BRG 257.57° KUS / 11.46 NM KNA
FAF	54 58 24.1N 024 16 41.1E	BRG 257.56° KUS / 7.36 NM KNA
SDF	54 58 07.2N 024 10 53.0E	BRG 257.56° KUS / 4.00 NM KNA
NDB KUS (IAF, MAPt)	54 57 56.6N 024 07 18.7E	1.94 NM KNA
KNA	54 57 37.4N 024 03 59.1E	
DTHR RWY 26	54 57 53.79N 024 06 19.46E	
Final approach descent angle: 3.00°		





**MISSED APPROACH**

Climb on QDR 258° KUS to 2200, then turn right (MAX IAS 220 KT) to KUS. Climb with 3.5% or more until passing 2200 due to airspace structure.

**TRANSITION ALT 5000**

DTHR ELEV 258

	DME KNA	NDB KUS	FAF	IF KA452	
		2200	2200	2200	
		SDF 1140			
		5.2% (3.0°)			
		OCA(OCH)	660(400)	680(420)	
NM to/from DTHR RWY 26	7	6	5	4	3
NM to/from DME KNA	0	1.9	4.0	7.4	11.5

<b>OCA(OCH)</b>		<b>C</b>	<b>D</b>	DIST DME KNA						
STRAIGHT-IN APPROACH	NDB	630 (370)		7	6	5	4	3		
	NDB (when SDF not received)	660 (400)								
CIRCLING		1230 (970)	not authorized	Timing not authorized for defining the MAPt						
	GS	Kts		80	100	120	140	160	180	
	FAF-MAPt	5.4 NM	min:sec	4:03	3:14	2:42	2:19	2:02	1:48	
	Rate of descent (5.2%)	ft/min		415	520	625	730	835	940	

For data tabulation see verso

INSTRUMENT  
APPROACH  
CHART - ICAO

**AERODROME ELEV 259**  
HEIGHTS RELATED TO  
DTHR RWY 26 - ELEV 258

TWR	124.205
	118.505
ATIS	129.055

**KAUNAS**  
**NDB Y RWY 26**  
**(CAT C/D)**

TABULAR DESCRIPTION

**IAF NASAP, INITIAL APPROACH**

Serial Number	Path Descriptor	Waypoint Identifier	Fly-over	Course/Track °M(°T)	Magnetic Variation	Distance (NM)/ Time	Turn Direction	Altitude (FT)/ Flight level	Speed (KT)	VPA/TCH	Navigation Specification
001	IF	NASAP	—	—	-7.5	—	—	+5000	-230	—	RNAV 1
002	TF	KA456	—	138(146.0)	-7.5	3.4	—	+4000	—	—	RNAV 1
003	TF	KA457	—	185(192.2)	-7.5	4.4	—	—	—	—	RNAV 1
004	TF	KA452	—	276(283.1)	-7.5	3.6	—	+2200	—	—	RNAV 1

**IAF REGLU, INITIAL APPROACH**

Serial Number	Path Descriptor	Waypoint Identifier	Fly-over	Course/Track °M(°T)	Magnetic Variation	Distance (NM)/ Time	Turn Direction	Altitude (FT)/ Flight level	Speed (KT)	VPA/TCH	Navigation Specification
001	IF	REGLU	—	—	-7.5	—	—	+4000	-230	—	RNAV 1
002	TF	KA452	—	336(343.6)	-7.5	7.4	—	+2200	—	—	RNAV 1

**NDB INSTRUMENT APPROACH from IAFs(KUS, NASAP, REGLU)**

FIX/POINTS	COORDINATES	FIX FORMATION
NASAP (IAF)	55 04 57.2N 024 28 10.6E	BRG 232.01° KUS / 15.74 NM KNA
REGLU (IAF)	54 51 37.2N 024 27 23.7E	BRG 290.99° KUS / 14.79 NM KNA
KA456	55 02 09.7N 024 31 27.3E	BRG 245.40° KUS / 16.46 NM KNA
KA457	54 57 55.1N 024 29 51.4E	BRG 262.43° KUS / 14.92 NM KNA
KA452 (IF)	54 58 44.2N 024 23 46.4E	1BRG 257.57° KUS / 11.46 NM KNA
FAF	54 58 24.1N 024 16 41.1E	BRG 257.56° KUS / 7.36 NM KNA
SDF	54 58 07.2N 024 10 53.0E	BRG 257.56° KUS / 4.00 NM KNA
NDB KUS (IAF, MAPt)	54 57 56.6N 024 07 18.7E	1.94 NM KNA
KNA	54 57 37.4N 024 03 59.1E	
DTHR RWY 26	54 57 53.79N 024 06 19.46E	
Final approach descent angle: 3.00°		