



Phone:	+370 706 94 613	SE "ORO NAVIGACIJA"	<b>AIP SUP: 004/2021</b>
Fax:	+370 706 94 614	Aeronautical Information Service	<b>Effective Date: 17-Jun-2021</b>
AFS:	EYVNYOYX	Balio Karvelio Str. 25	<b>End Date:</b>
URL:	www.ans.lt	LT-02184 Vilnius, Lithuania	<b>Publication Date: 29-Apr-2021</b>
Email:	ais@ans.lt		

## S 004. UPDATED INSTRUMENT APPROACH CHARTS FOR KAUNAS AERODROME

The following AIP subsections affected: GEN 3.2 EYKA AD-2.24

This AIP supplement provides new and updated information of Instrument Approach Charts for Kaunas aerodrome.

Updated information on charts and aeronautical data tabulations related to Obstacle Clearance Altitude (Height) and the Operating minima for Kaunas aerodrome, changed magnetic variation, other changes due to requirements to charts.

The following changes enter into force from **17 June 2021**:

1. EYKA AD 2.24-20 Instrument Approach Chart – ICAO ILS or LOC RWY 08 replaced by:
  - Instrument Approach Chart – ICAO ILS Z RWY 08 (CAT A/B/C/D)
  - Instrument Approach Chart – ICAO ILS Y or LOC RWY 08 (CAT A/B/C/D)
2. EYKA AD 2.24-21 Instrument Approach Chart – ICAO ILS or LOC RWY 26 replaced by:
  - Instrument Approach Chart – ICAO ILS CAT II Z RWY 26 (CAT A/B/C/D)
  - Instrument Approach Chart – ICAO ILS CAT II Y or LOC RWY 26 (CAT A/B/C/D)
3. EYKA AD 2.24-22 Instrument Approach Chart – ICAO VOR RWY 08 replaced by:
  - Instrument Approach Chart – ICAO VOR Z RWY 08 (CAT A/B)
  - Instrument Approach Chart – ICAO VOR Y RWY 08 (CAT C/D)
4. EYKA AD 2.24-23 Instrument Approach Chart – ICAO VOR RWY 26 replaced by:
  - Instrument Approach Chart – ICAO VOR Z RWY 26 (CAT A/B)
  - Instrument Approach Chart – ICAO VOR Y RWY 26 (CAT C/D)
5. EYKA AD 2.24-24 Instrument Approach Chart – ICAO NDB RWY 08 replaced by:
  - Instrument Approach Chart – ICAO NDB Z RWY 08 (CAT A/B)
  - Instrument Approach Chart – ICAO NDB Y RWY 08 (CAT C/D)
6. EYKA AD 2.24-25 Instrument Approach Chart – ICAO NDB RWY 26 replaced by:
  - Instrument Approach Chart – ICAO NDB Z RWY 26 (CAT A/B)
  - Instrument Approach Chart – ICAO NDB Y RWY 26 (CAT C/D)

Instrument Approach Charts and related aeronautical data tabulations:

Appendix 1. Instrument Approach Chart – ICAO ILS Z RWY 08 (CAT A/B/C/D)

Appendix 2. Instrument Approach Chart – ICAO ILS Y or LOC RWY 08 (CAT A/B/C/D)

Appendix 3. Instrument Approach Chart – ICAO ILS CAT II Z RWY 26 (CAT A/B/C/D)

Appendix 4. Instrument Approach Chart – ICAO ILS CAT II Y or LOC RWY 26 (CAT A/B/C/D)

Appendix 5. Instrument Approach Chart – ICAO VOR Z RWY 08 (CAT A/B)

Appendix 6. Instrument Approach Chart – ICAO VOR Y RWY 08 (CAT C/D)

Appendix 7. Instrument Approach Chart – ICAO VOR Z RWY 26 (CAT A/B)

Appendix 8. Instrument Approach Chart – ICAO VOR Y RWY 26 (CAT C/D)

Appendix 9. Instrument Approach Chart – ICAO NDB Z RWY 08 (CAT A/B)

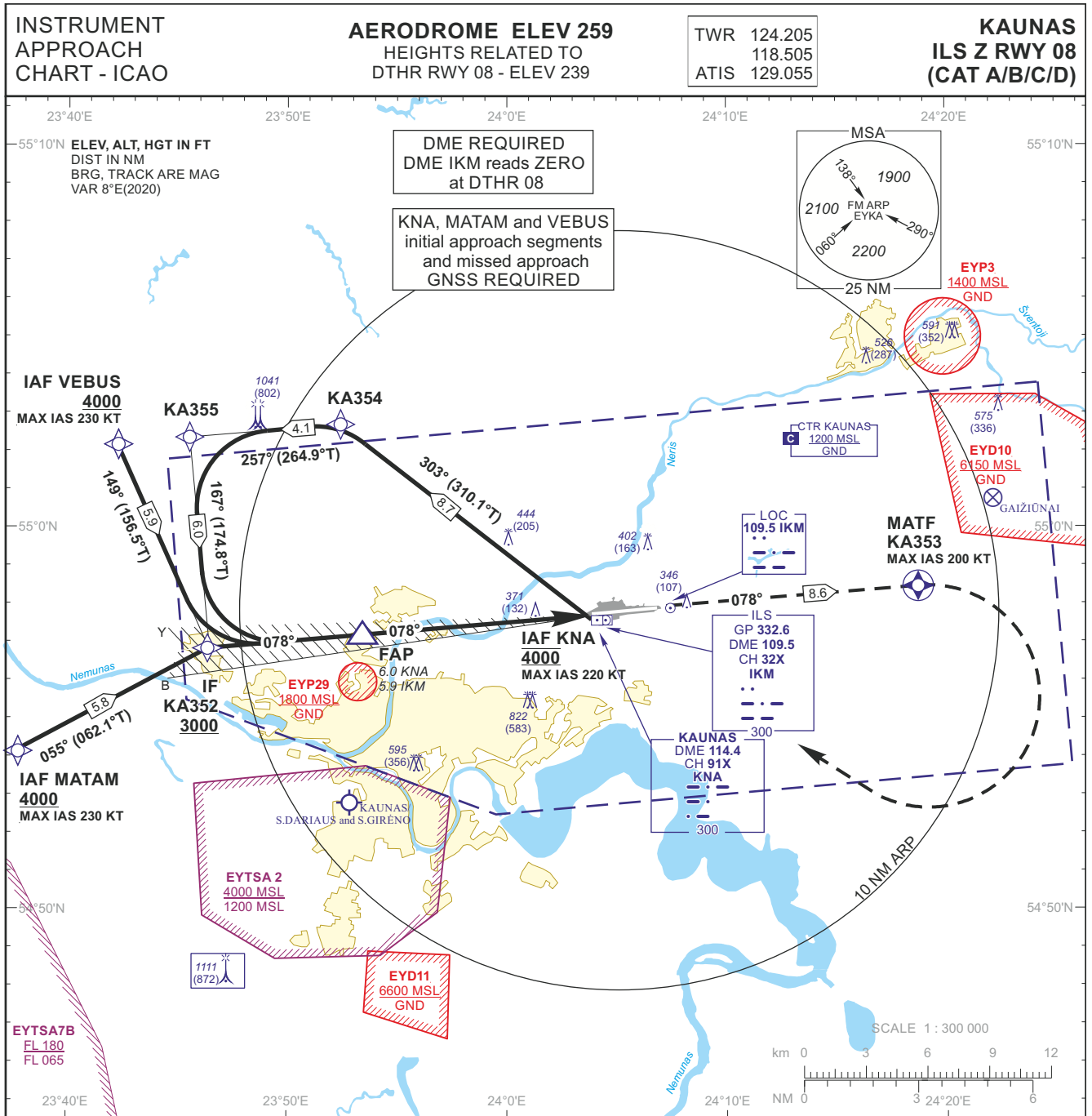
Appendix 10. Instrument Approach Chart – ICAO NDB Y RWY 08 (CAT C/D)

Appendix 11. Instrument Approach Chart – ICAO NDB Z RWY 26 (CAT A/B)

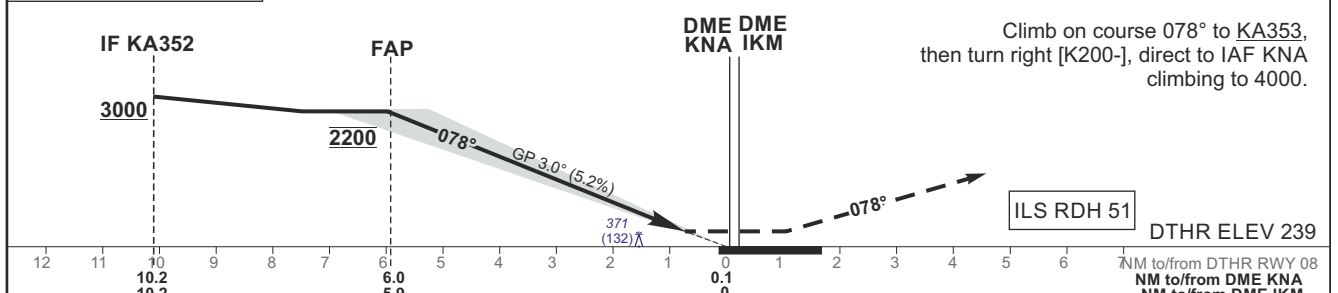
Appendix 12. Instrument Approach Chart – ICAO NDB Y RWY 26 (CAT C/D)

This AIP supplement will be cancelled when the contents are incorporated into AIP.

**-END-**



TRANSITION ALT 5000 MISSED APPROACH



OCA(OCH)	ILS CAT I	A	B	C	D	DIST DME IKM	5	4	3	2
STRAIGHT-IN APPROACH		492 (253)	504 (265)	512 (273)	523 (284)	Altitude	1870	1560	1240	930
						Height	(1631)	(1321)	(1001)	(691)
CIRCLING		710 (450)	760 (500)	1230 (970)	not authorized					
GS		Kts		80	100	120	140	160	180	
FAP-DTHR 5.9 NM		min:sec		4:25	3:32	2:57	2:32	2:13	1:58	
Rate of descent (5.2%)		ft/min		415	520	625	730	835	940	

For data tabulation see verso

INSTRUMENT APPROACH CHART - ICAO	<b>AERODROME ELEV 259</b> HEIGHTS RELATED TO DTHR RWY 08 - ELEV 239	TWR 124.205 118.505 ATIS 129.055	<b>KAUNAS</b> <b>ILS Z RWY 08</b> <b>(CAT A/B/C/D)</b>
--	---	--	--

**TABULAR DESCRIPTION**

**IAF KNA, INITIAL APPROACH**

Serial Number	Path Descriptor	Waypoint Identifier	Fly-over	Course/Track °M(°T)	Magnetic Variation	Distance (NM)/ Time	Turn Direction	Altitude (FT)/ Flight level	Speed (KT)	VPA/TCH	Navigation Specification
001	IF	KNA	—	—	-7.5	—	—	@4000	-220	—	RNAV 1
002	TF	KA354	—	303(310.1)	-7.5	8.7	—	—	—	—	RNAV 1
003	TF	KA355	—	257(264.9)	-7.5	4.1	—	—	—	—	RNAV 1
004	TF	KA352	—	167(174.8)	-7.5	6.0	—	+3000	—	—	RNAV 1

**IAF MATAM, INITIAL APPROACH**

Serial Number	Path Descriptor	Waypoint Identifier	Fly-over	Course/Track °M(°T)	Magnetic Variation	Distance (NM)/ Time	Turn Direction	Altitude (FT)/ Flight level	Speed (KT)	VPA/TCH	Navigation Specification
001	IF	MATAM	—	—	-7.5	—	—	+4000	-230	—	RNAV 1
002	TF	KA352	—	055(062.1)	-7.5	5.8	—	+3000	—	—	RNAV 1

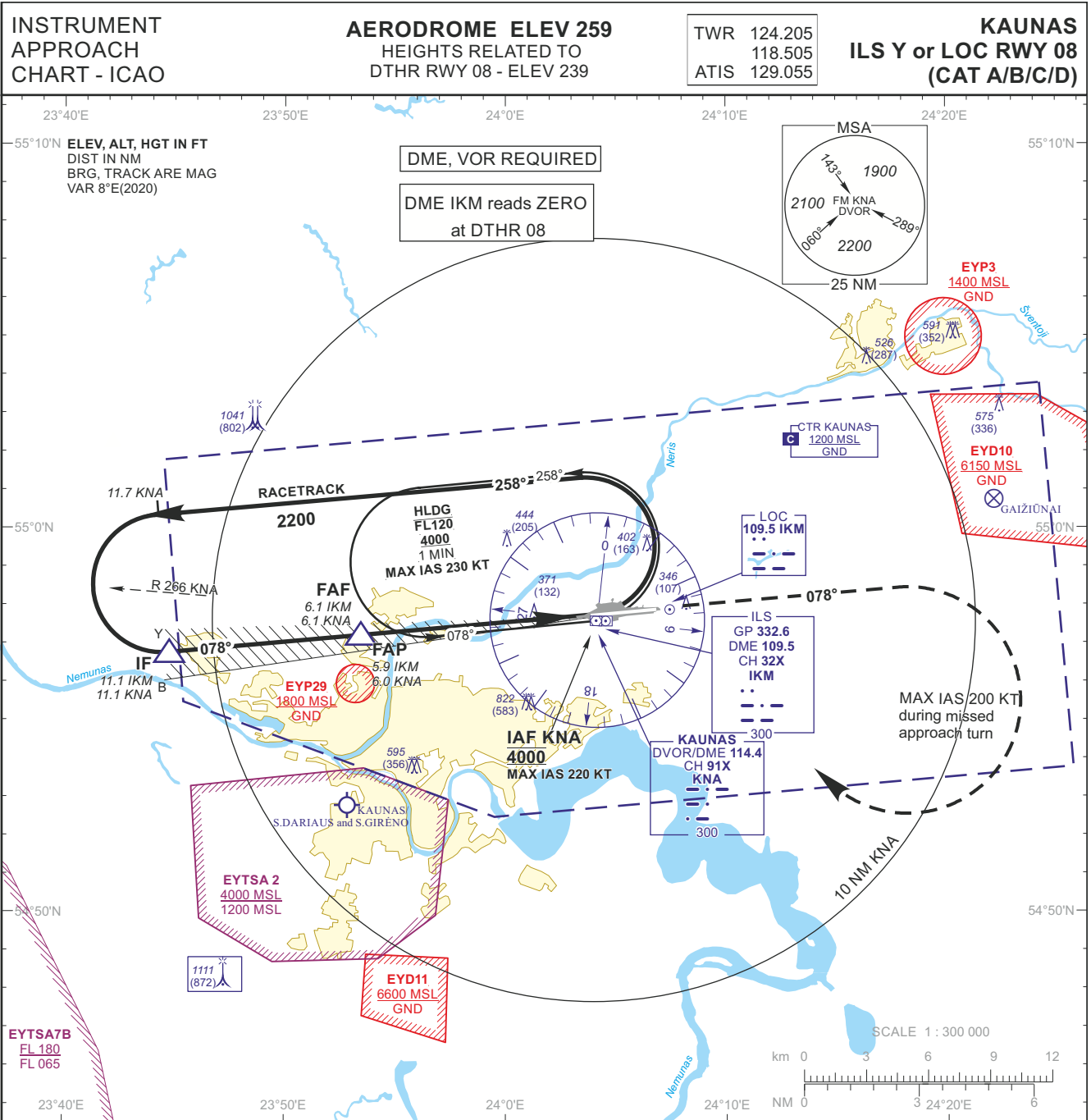
**IAF VEBUS, INITIAL APPROACH**

Serial Number	Path Descriptor	Waypoint Identifier	Fly-over	Course/Track °M(°T)	Magnetic Variation	Distance (NM)/ Time	Turn Direction	Altitude (FT)/ Flight level	Speed (KT)	VPA/TCH	Navigation Specification
001	IF	VEBUS	—	—	-7.5	—	—	+4000	-230	—	RNAV 1
002	TF	KA352	—	149(156.5)	-7.5	5.9	—	+3000	—	—	RNAV 1

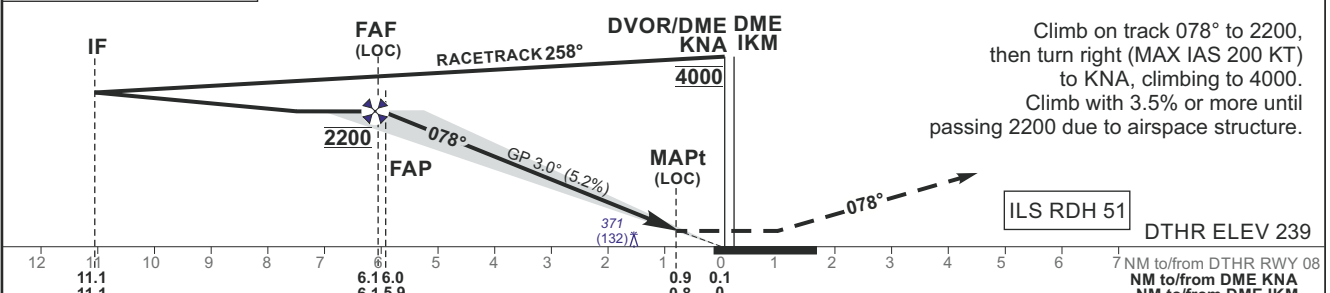
**MISSED APPROACH**

001	—	RW08	—	—	-7.5	—	—	—	—	—	RNAV 1
002	CF	KA353	Y	078(085.27)	-7.5	8.60	—	—	-200	—	RNAV 1
003	DF	KNA	—	—	-7.5	—	R	@4000	-220	—	RNAV 1

FIX/POINTS	COORDINATES	FIX FORMATION
MATAM (IAF)	54 54 08.9N 023 37 22.7E	
VEBUS (IAF)	55 02 19.2N 023 42 11.7E	
KNA (IAF)	54 57 37.4N 024 03 59.1E	
KA354	55 03 12.8N 023 52 27.9E	
KA355	55 02 51.2N 023 45 21.8E	
KA352 (IF)	54 56 52.8N 023 46 18.3E	10.22 NM KNA ; BRG 077.57° / 10.15 NM IKM
FAP	54 57 15.6N 023 53 38.8E	5.97 NM KNA ; BRG 077.57° / 5.90 NM IKM
RW08 (DTHR)	54 57 46.44N 024 03 50.94E	
KA353 (MATF)	54 58 29.9N 024 18 43.4E	
DME IKM	54 57 42.8N 024 0408.4E	
LOC IKM	54 57 55.25N 024 06 49.06E	



TRANSITION ALT 5000 MISSED APPROACH



OCA(OCH)	ILS CAT I	A	B	C	D	DIST DME IKM	5	4	3	2	
		492 (253)	504 (265)	512 (273)	523 (284)		Altitude	1870	1560	1240	930
STRAIGHT-IN APPROACH	LOC	630 (390)				Height	(1631)	(1321)	(1001)	(691)	
	CIRCLING	710 (450)	760 (500)	1230 (970)	not authorized	LOC : timing not authorized for defining the MAPt					
GS		Kts		80	100	120	140	160	180		
FAF-MAPt		5.3 NM		min:sec	3:59	3:11	2:39	2:16	1:59	1:46	
Rate of descent (5.2%)		ft/min		415	520	625	730	835	940		

For data tabulation see verso

INSTRUMENT  
APPROACH  
CHART - ICAO

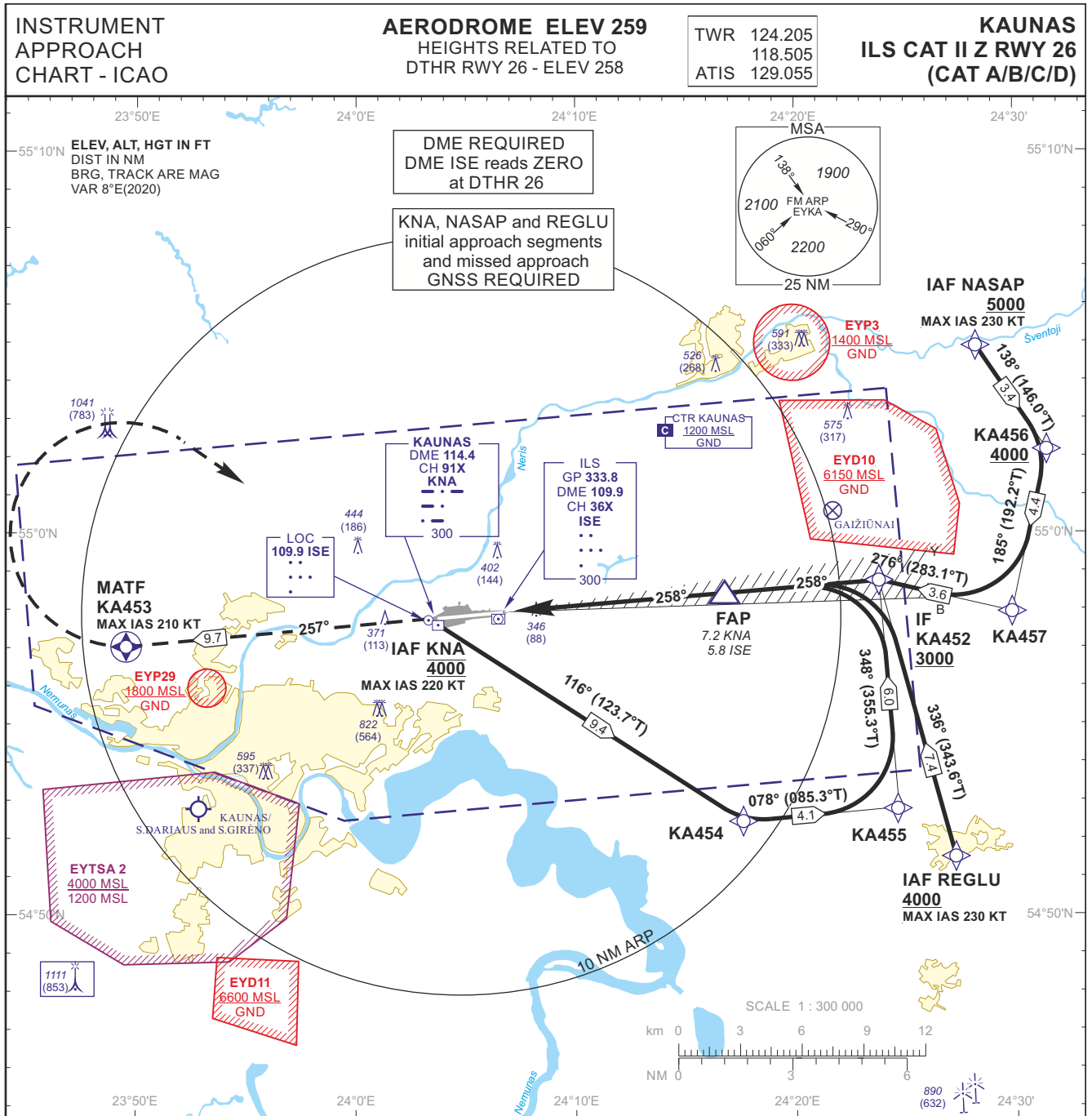
**AERODROME ELEV 259**  
HEIGHTS RELATED TO  
DTHR RWY 08 - ELEV 239

TWR	124.205
	118.505
ATIS	129.055

**KAUNAS**  
**ILS Y or LOC RWY 08**  
**(CAT A/B/C/D)**

TABULAR DESCRIPTION

ILS or LOC INSTRUMENT APPROACH from IAF(KNA)		
FIX/POINTS	COORDINATES	FIX FORMATION
KNA (IAF)	54 57 37.4N 024 03 59.1E	
IF	54 56 48.0N 023 44 45.0E	11.12 NM KNA ; BRG 077.57° / 11.06 NM IKM
FAF	54 57 14.8N 023 53 23.4E	6.12 NM KNA ; BRG 077.57° / 6.05 NM IKM
FAP	54 57 15.6N 023 53 38.8E	5.97 NM KNA ; BRG 077.57° / 5.90 NM IKM
MAPt	54 57 42.3N 024 02 28.0E	0.88 NM KNA ; BRG 077.57° / 0.80 NM IKM
DTHR RWY 08	54 57 46.44N 024 03 50.94E	
DME IKM	54 57 42.8N 024 04 08.4E	
LOC IKM	54 57 55.25N 024 06 49.06E	
Final approach (LOC) descent angle: 3.00°		



**MISSED APPROACH**

Climb on course 257° to KA453, then turn right [K210-], direct to IAF KNA climbing to 4000.

ILS RDH 52

DTHR ELEV 258

TRANSITION ALT 5000

DME KNA DME ISE FAP IF KA452

GP 3.0° (5.2%) 258° 2200 3000

NM to/from DTHR RWY 26 7 6 5 4 3 2 1 0 1 2 3 4 5 6 7 8 9 10 11 12

NM to/from DME KNA 0 1.4 0 346 (88) 2 3 4 5 6 7 8 9 10 11 12

NM to/from DME ISE 0 1.4 0 7.2 5.8 11.5 10.1

OCA(OCH)		A	B	C	D	DIST DME ISE	5	4	3	2
STRAIGHT-IN APPROACH	ILS CAT II	408 (150)	425 (167)	436 (178)	451 (193)	Altitude	1890	1580	1260	950
	ILS CAT I	496 (238)	508 (250)	516 (258)	526 (268)	Height	(1632)	(1322)	(1002)	(692)
CIRCLING		710 (450)	760 (500)	1230 (970)	not authorized					
GS		Kts	80	100	120	140	160	180		
FAP-DTHR 5.8 NM		min:sec	4:21	3:29	2:54	2:29	2:11	1:56		
Rate of descent (5.2%)		ft/min	415	520	625	730	835	940		

For data tabulation see verso

INSTRUMENT  
APPROACH  
CHART - ICAO

**AERODROME ELEV 259**  
HEIGHTS RELATED TO  
DTHR RWY 26 - ELEV 258

TWR	124.205
	118.505
ATIS	129.055

**KAUNAS**  
**ILS CAT II Z RWY 26**  
**(CAT A/B/C/D)**

TABULAR DESCRIPTION

**IAF KNA, INITIAL APPROACH**

Serial Number	Path Descriptor	Waypoint Identifier	Fly-over	Course/Track °M(°T)	Magnetic Variation	Distance (NM)/ Time	Turn Direction	Altitude (FT)/ Flight level	Speed (KT)	VPA/TCH	Navigation Specification
001	IF	KNA	—	—	-7.5	—	—	@4000	-220	—	RNAV 1
002	TF	KA454	—	116(123.7)	-7.5	9.4	—	—	—	—	RNAV 1
003	TF	KA455	—	078(085.3)	-7.5	4.1	—	—	—	—	RNAV 1
004	TF	KA452	—	348(355.3)	-7.5	6.0	—	+3000	—	—	RNAV 1

**IAF NASAP, INITIAL APPROACH**

Serial Number	Path Descriptor	Waypoint Identifier	Fly-over	Course/Track °M(°T)	Magnetic Variation	Distance (NM)/ Time	Turn Direction	Altitude (FT)/ Flight level	Speed (KT)	VPA/TCH	Navigation Specification
001	IF	NASAP	—	—	-7.5	—	—	+5000	-230	—	RNAV 1
002	TF	KA456	—	138(146.0)	-7.5	3.4	—	+4000	—	—	RNAV 1
003	TF	KA457	—	185(192.2)	-7.5	4.4	—	—	—	—	RNAV 1
004	TF	KA452	—	276(283.1)	-7.5	3.6	—	+3000	—	—	RNAV 1

**IAF REGLU, INITIAL APPROACH**

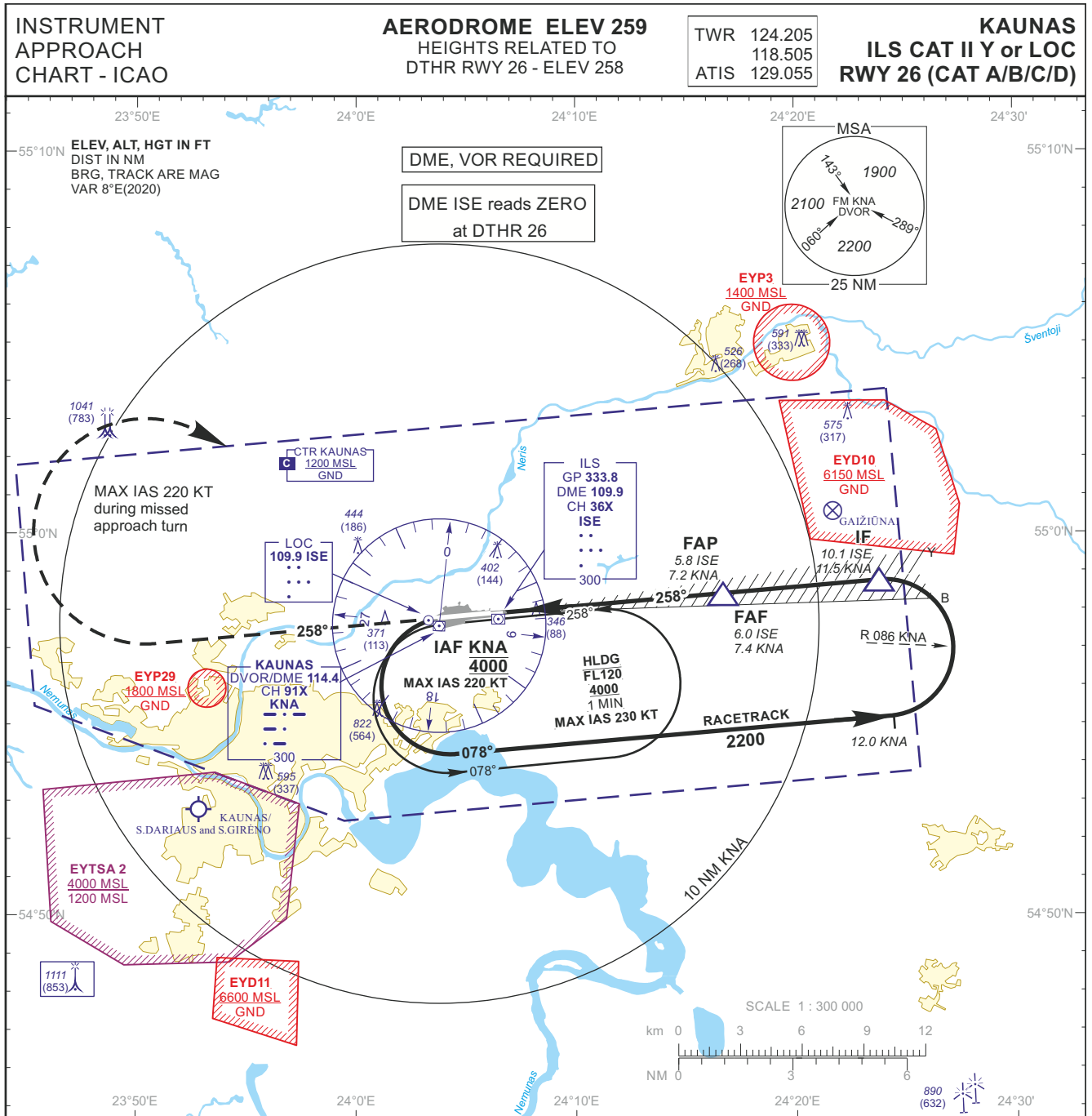
Serial Number	Path Descriptor	Waypoint Identifier	Fly-over	Course/Track °M(°T)	Magnetic Variation	Distance (NM)/ Time	Turn Direction	Altitude (FT)/ Flight level	Speed (KT)	VPA/TCH	Navigation Specification
001	IF	REGLU	—	—	-7.5	—	—	+4000	-230	—	RNAV 1
002	TF	KA452	—	336(343.6)	-7.5	7.4	—	+3000	—	—	RNAV 1

**MISSED APPROACH**

001	—	RW26	—	—	-7.5	—	—	—	—	—	RNAV 1
002	CF	KA453	Y	257(264.87)	-7.5	9.7	—	—	-210	—	RNAV 1
003	DF	KNA	—	—	-7.5	—	R	@4000	-220	—	RNAV 1

FIX/POINTS	COORDINATES	FIX FORMATION
NASAP (IAF)	55 04 57.2N 024 28 10.6E	
REGLU (IAF)	54 51 37.2N 024 27 23.7E	
KNA (IAF)	54 57 37.4N 024 03 59.1E	
KA454	54 52 26.0N 024 17 33.7E	
KA455	54 52 46.2N 024 24 37.3E	
KA456	55 02 09.7N 024 31 27.3E	
KA457	54 57 55.1N 024 29 51.4E	
KA452 (IF)	54 58 44.2N 024 23 46.4E	11.46 NM KNA ; BRG 257.53° / 10.09 NM ISE
FAP	54 58 23.3N 024 16 25.6E	7.21 NM KNA ; BRG 257.53° / 5.84 NM ISE
RW26 (DTHR)	54 57 53.79N 024 06 19.46E	
KA453 (MATF)	54 57 03.0N 023 49 33.4E	
DME ISE	54 57 49.0N 024 06 00.1E	
LOC ISE	54 57 44.97N 024 03 21.54E	





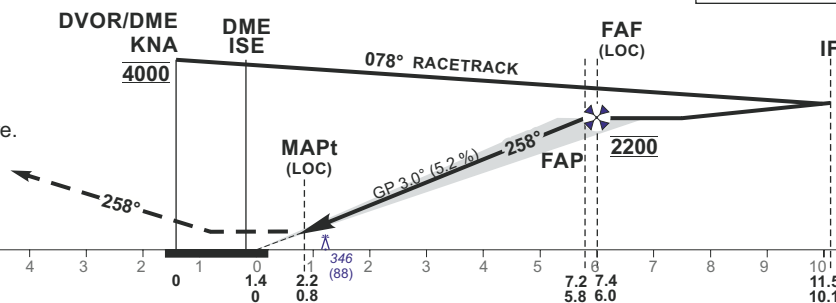
**MISSED APPROACH**

Climb on track 258° to 2200, then turn right (MAX IAS 220 KT) to KNA, climbing to 4000. Climb with 3.5% or more until passing 2200 due to airspace structure.

ILS RDH 52

DTHR ELEV 258

NM to/from DTHR RWY 26 7  
NM to/from DME KNA  
NM to/from DME ISE



TRANSITION ALT 5000

OCA(OCH)	A	B	C	D	DIST DME ISE	5	4	3	2				
STRAIGHT-IN APPROACH	ILS CAT II	408 (150)	425 (167)	436 (178)	451 (193)	Altitude	1890	1580	1260	950			
	ILS CAT I	496 (238)	508 (250)	516 (258)	526 (268)	Height	(1632)	(1322)	(1002)	(692)			
	LOC	620 (360)				LOC : timing not authorized for defining the MAPt							
CIRCLING		710 (450)	760 (500)	1230 (970)	not authorized	GS	Kts	80	100	120	140	160	180
						FAP-MAPt	5.1 NM	min:sec	3:49	3:03	2:33	2:11	1:55
						Rate of descent (5.2%)	ft/min	415	520	625	730	835	940

For data tabulation see verso

INSTRUMENT  
APPROACH  
CHART - ICAO

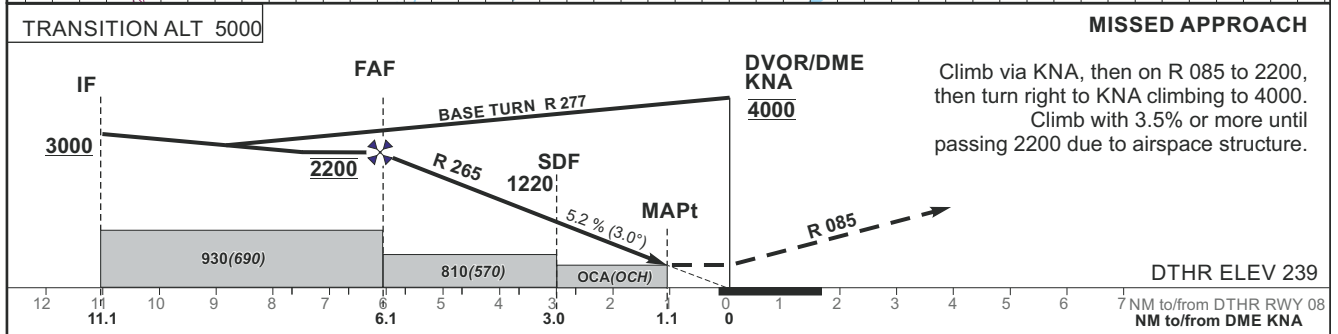
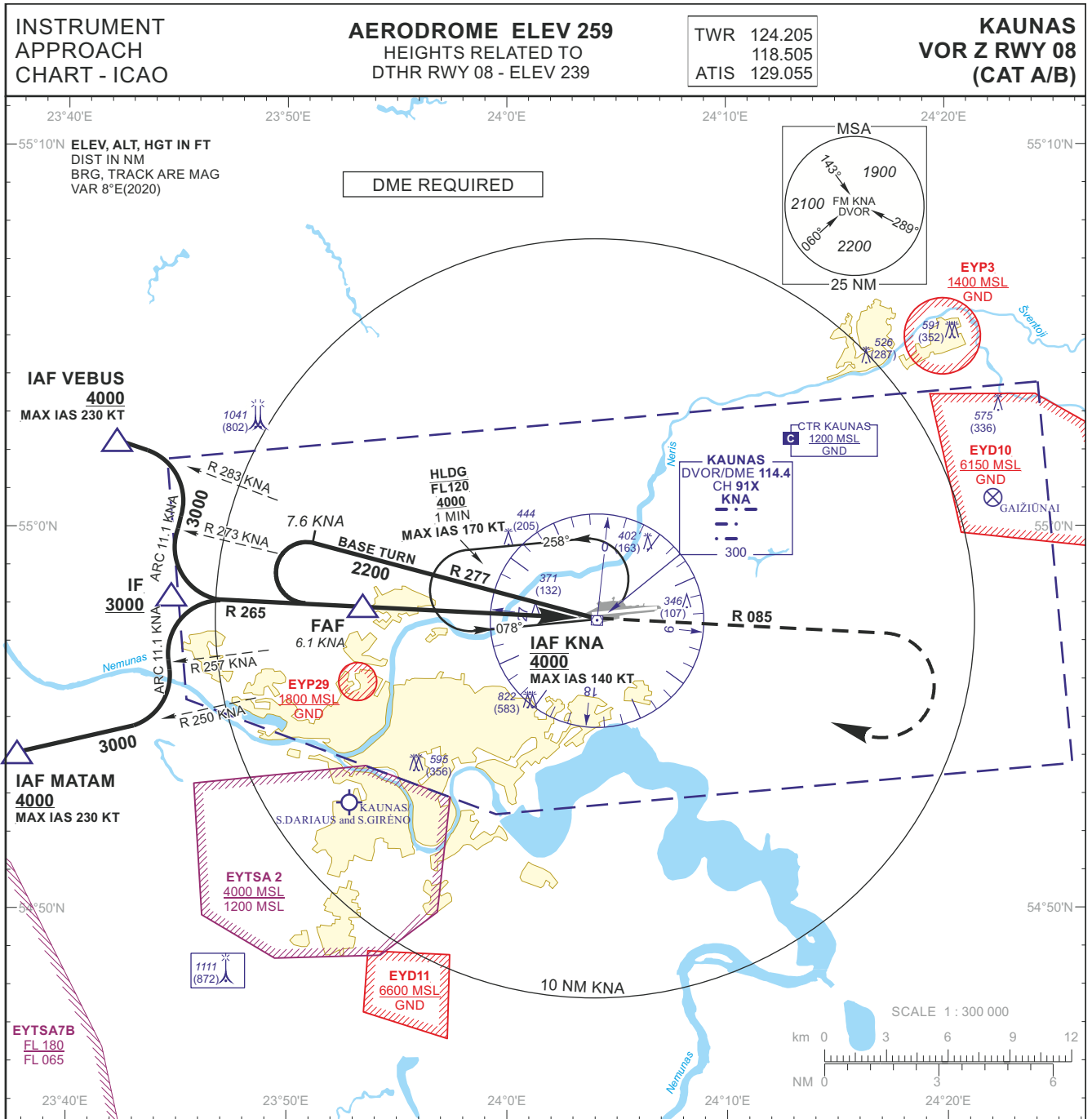
**AERODROME ELEV 259**  
HEIGHTS RELATED TO  
DTHR RWY 26 - ELEV 258

TWR	124.205
	118.505
ATIS	129.055

**KAUNAS**  
**ILS CAT II Y or LOC**  
**RWY 26 (CAT A/B/C/D)**

TABULAR DESCRIPTION

ILS or LOC INSTRUMENT APPROACH from IAF(KNA)		
FIX/POINTS	COORDINATES	FIX FORMATION
KNA (IAF)	54 57 37.4N 024 03 59.1E	
IF	54 58 44.2N 024 23 46.4E	11.46 NM KNA ; BRG 257.53° / 10.09 NM ISE
FAF	54 58 24.0N 024 16 41.1E	7.36 NM KNA ; BRG 257.53° / 5.99 NM ISE
FAP	54 58 23.3N 024 16 25.6E	7.21 NM KNA ; BRG 257.53° / 5.84 NM ISE
MAPt	54 57 57.9N 024 07 42.5E	2.17 NM KNA ; BRG 257.53° / 0.80 NM ISE
DTHR RWY 26	54 57 53.79N 024 06 19.46E	
DME ISE	54 57 49.0N 024 06 00.1E	
LOC ISE	54 57 44.97N 024 03 21.54E	
Final approach (LOC) descent angle: 3.00°		



OCA(OCH)		A	B	DIST DME KNA			
STRAIGHT-IN APPROACH	VOR	780 (540)		5	4	3	2
	VOR (when SDF not received)	810 (570)		Altitude	1850	1530	1220
CIRCLING		710 (450)	760 (500)	Height	(1611)	(1291)	(981) (661)
Timing not authorized for defining the MAPt							
GS		Kts	80	100	120	140	160
FAF-MAPt 5.0 NM		min:sec	3:45	3:00	2:30	2:09	1:53
Rate of descent (5.2%)		ft/min	415	520	625	730	835

For data tabulation see verso

INSTRUMENT  
APPROACH  
CHART - ICAO

**AERODROME ELEV 259**  
HEIGHTS RELATED TO  
DTHR RWY 08 - ELEV 239

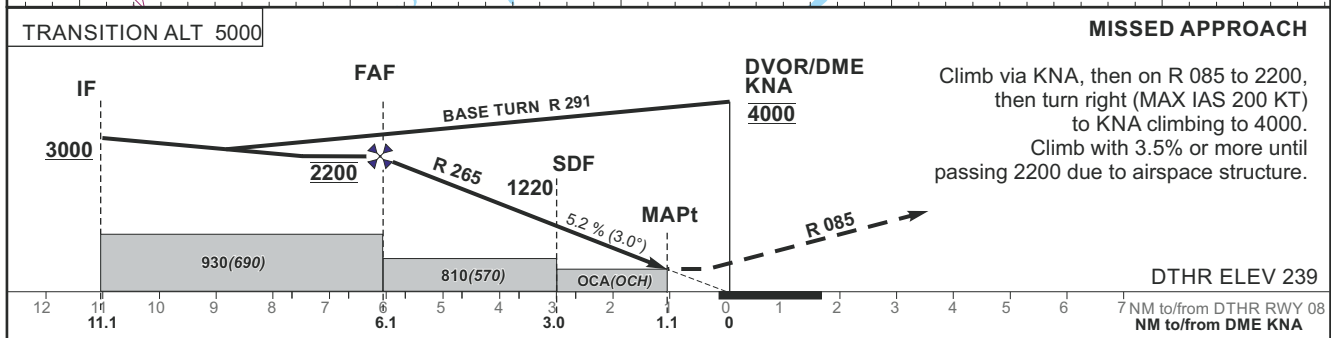
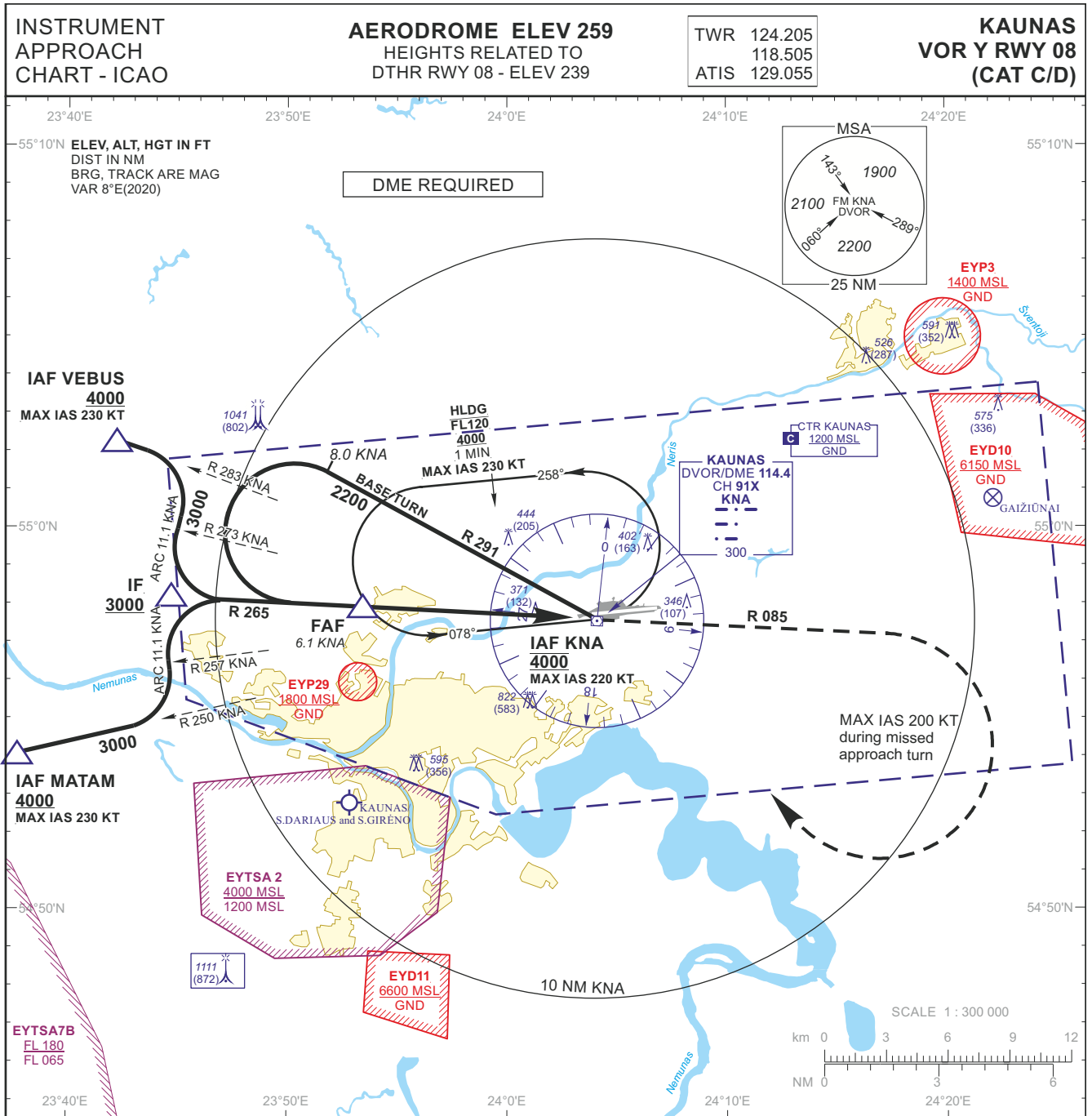
TWR	124.205
	118.505
ATIS	129.055

**KAUNAS**  
**VOR Z RWY 08**  
**(CAT A/B)**

TABULAR DESCRIPTION

VOR INSTRUMENT APPROACH from IAFs(KNA, MATAM, VEBUS)

FIX/POINTS	COORDINATES	FIX FORMATION
MATAM (IAF)	54 54 08.9N 023 37 22.7E	BRG 069.87° / 15.74 NM KNA
VEBUS (IAF)	55 02 19.2N 023 42 11.7E	BRG 103.17° / 13.40 NM KNA
KNA (IAF)	54 57 37.4N 024 03 59.1E	
IF	54 58 10.8N 023 44 41.9E	BRG 085.47° / 11.13 NM KNA
FAF	54 57 56.2N 023 53 22.0E	BRG 085.47° / 6.13 NM KNA
SDF	54 57 46.7N 023 58 47.8E	BRG 085.47° / 3.00 NM KNA
MAPt	54 57 41.0N 024 02 00.9E	BRG 085.47° / 1.14 NM KNA
DTHR RWY 08	54 57 46.44N 024 03 50.94E	
Final approach descent angle: 3.00°		



OCA(OCH)		C	D	DIST DME KNA			
STRAIGHT-IN APPROACH	VOR	780 (540)		5	4	3	2
	VOR (when SDF not received)	810 (570)		Altitude	1850	1530	1220
CIRCLING		1230 (970)	not authorized	Height	(1611)	(1291)	(981) (661)
Timing not authorized for defining the MAPt							
GS		Kts		80	100	120	140 160 180
FAF-MAPt 5.0 NM		min:sec		3:45	3:00	2:30	2:09 1:53 1:40
Rate of descent (5.2%)		ft/min		415	520	625	730 835 940

For data tabulation see verso

INSTRUMENT  
APPROACH  
CHART - ICAO

**AERODROME ELEV 259**  
HEIGHTS RELATED TO  
DTHR RWY 08 - ELEV 239

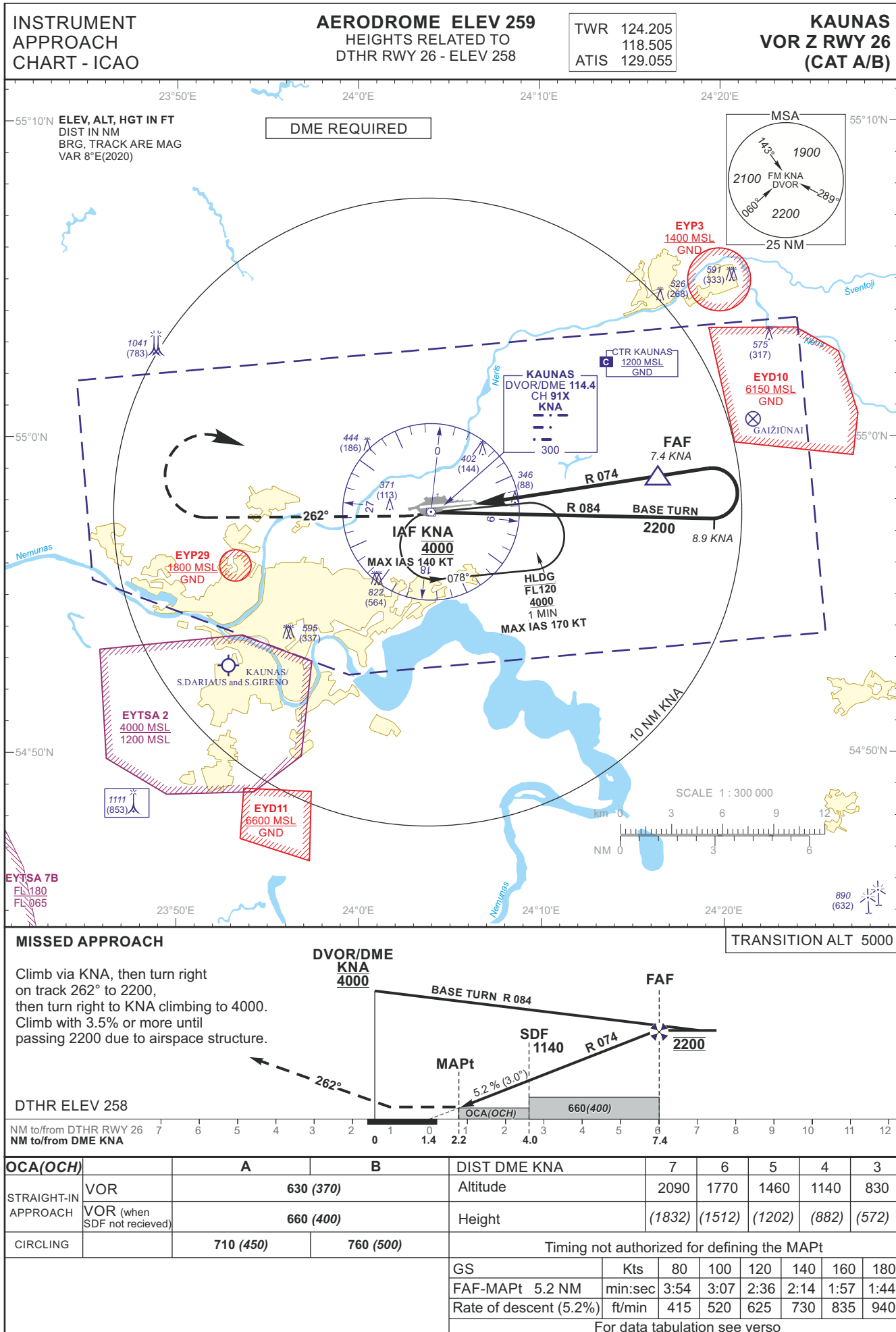
TWR	124.205
	118.505
ATIS	129.055

**KAUNAS**  
**VOR Y RWY 08**  
**(CAT C/D)**

TABULAR DESCRIPTION

VOR INSTRUMENT APPROACH from IAFs(KNA, MATAM, VEBUS)

FIX/POINTS	COORDINATES	FIX FORMATION
MATAM (IAF)	54 54 08.9N 023 37 22.7E	BRG 069.87° / 15.74 NM KNA
VEBUS (IAF)	55 02 19.2N 023 42 11.7E	BRG 103.17° / 13.40 NM KNA
KNA (IAF)	54 57 37.4N 024 03 59.1E	
IF	54 58 10.8N 023 44 41.9E	BRG 085.47° / 11.13 NM KNA
FAF	54 57 56.2N 023 53 22.0E	BRG 085.47° / 6.13 NM KNA
SDF	54 57 46.7N 023 58 47.8E	BRG 085.47° / 3.00 NM KNA
MAPt	54 57 41.0N 024 02 00.9E	BRG 085.47° / 1.14 NM KNA
DTHR RWY 08	54 57 46.44N 024 03 50.94E	
Final approach descent angle: 3.00°		



INSTRUMENT  
APPROACH  
CHART - ICAO

**AERODROME ELEV 259**  
HEIGHTS RELATED TO  
DTHR RWY 26 - ELEV 258

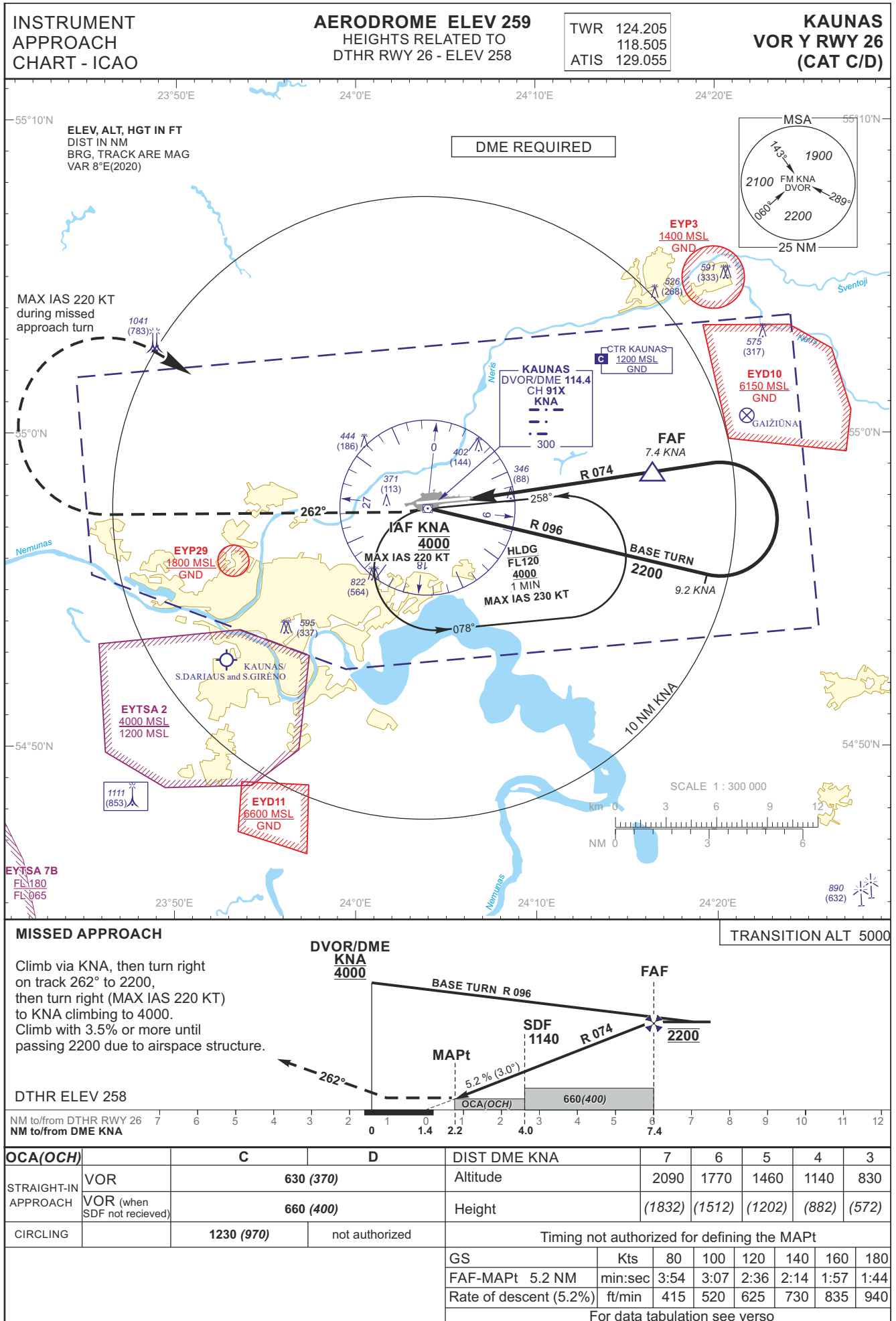
TWR	124.205
	118.505
ATIS	129.055

**KAUNAS**  
**VOR Z RWY 26**  
**(CAT A/B)**

TABULAR DESCRIPTION

VOR INSTRUMENT APPROACH from IAF(KNA)		
FIX/POINTS	COORDINATES	FIX FORMATION
KNA (IAF)	54 57 37.4N 024 03 59.1E	
FAF	54 58 45.8N 024 16 36.6E	BRG 253.47° / 7.37 NM KNA
SDF	54 58 14.8N 024 10 51.4E	BRG 253.47° / 4.00 NM KNA
MAPt	54 57 58.2N 024 07 47.7E	BRG 253.47° / 2.22 NM KNA
DTHR RWY 26	54 57 53.79N 024 06 19.46E	
Final approach descent angle: 3.00°		





INSTRUMENT  
APPROACH  
CHART - ICAO

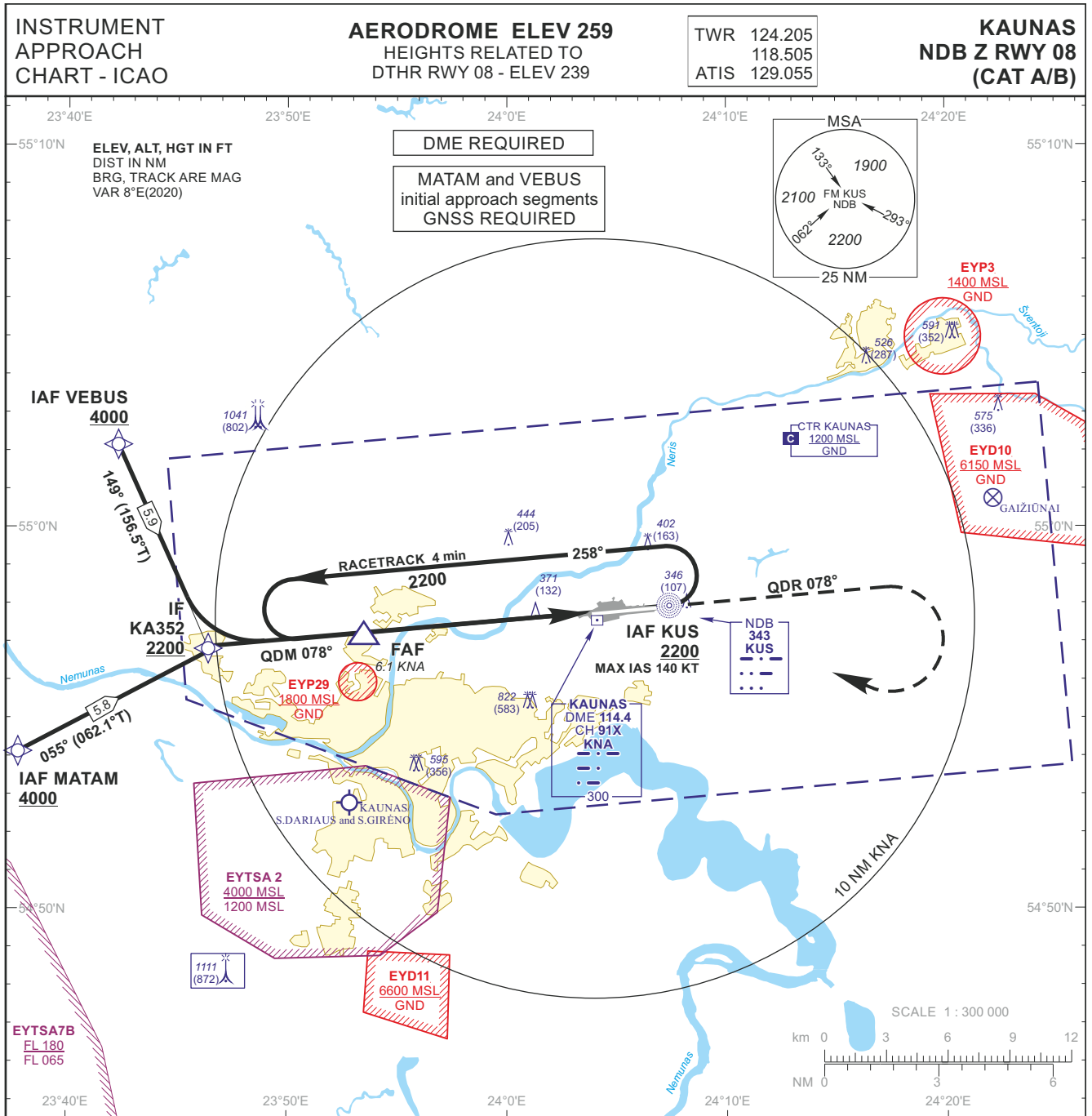
**AERODROME ELEV 259**  
HEIGHTS RELATED TO  
DTHR RWY 26 - ELEV 258

TWR	124.205
	118.505
ATIS	129.055

**KAUNAS**  
**VOR Y RWY 26**  
**(CAT C/D)**

TABULAR DESCRIPTION

VOR INSTRUMENT APPROACH from IAF(KNA)		
FIX/POINTS	COORDINATES	FIX FORMATION
KNA (IAF)	54 57 37.4N 024 03 59.1E	
FAF	54 58 45.8N 024 16 36.6E	BRG 253.47° / 7.37 NM KNA
SDF	54 58 14.8N 024 10 51.4E	BRG 253.47° / 4.00 NM KNA
MAPt	54 57 58.2N 024 07 47.7E	BRG 253.47° / 2.22 NM KNA
DTHR RWY 26	54 57 53.79N 024 06 19.46E	
Final approach descent angle: 3.00°		



TRANSITION ALT 5000		<b>MISSED APPROACH</b>					
		<p>Climb via KUS, then on QDR 078° KUS to 2200, then turn right to KUS. Climb with 3.5% or more until passing 2200 due to airspace structure.</p>					
		DTHR ELEV 239					
		NM to/from DTHR RWY 08 NM to/from DME KNA					
<b>OCA(OCH)</b>		<b>A</b>		<b>B</b>		<b>DIST DME KNA</b>	
STRAIGHT-IN APPROACH	NDB	630 (390)		Altitude		5	4
	NDB (when SDF not received)	810 (570)		Height		1850	1530
CIRCLING		710 (450)		760 (500)		1220	900
Timing not authorized for defining the MAPt							
		GS	Kts	80	100	120	140
		FAF-MAPt	5.2 NM	min:sec	3:54	3:07	2:36
		Rate of descent (5.2%)	ft/min	415	520	625	730
				835	940		
For data tabulation see verso							

INSTRUMENT  
APPROACH  
CHART - ICAO

**AERODROME ELEV 259**  
HEIGHTS RELATED TO  
DTHR RWY 08 - ELEV 239

TWR	124.205
	118.505
ATIS	129.055

**KAUNAS**  
**NDB Z RWY 08**  
**(CAT A/B)**

TABULAR DESCRIPTION

**IAF MATAM, INITIAL APPROACH**

Serial Number	Path Descriptor	Waypoint Identifier	Fly-over	Course/Track °M(°T)	Magnetic Variation	Distance (NM)/ Time	Turn Direction	Altitude (FT)/ Flight level	Speed (KT)	VPA/TCH	Navigation Specification
001	IF	MATAM	—	—	-7.5	—	—	+4000	—	—	RNAV 1
002	TF	KA352	—	055(062.1)	-7.5	5.8	—	+2200	—	—	RNAV 1

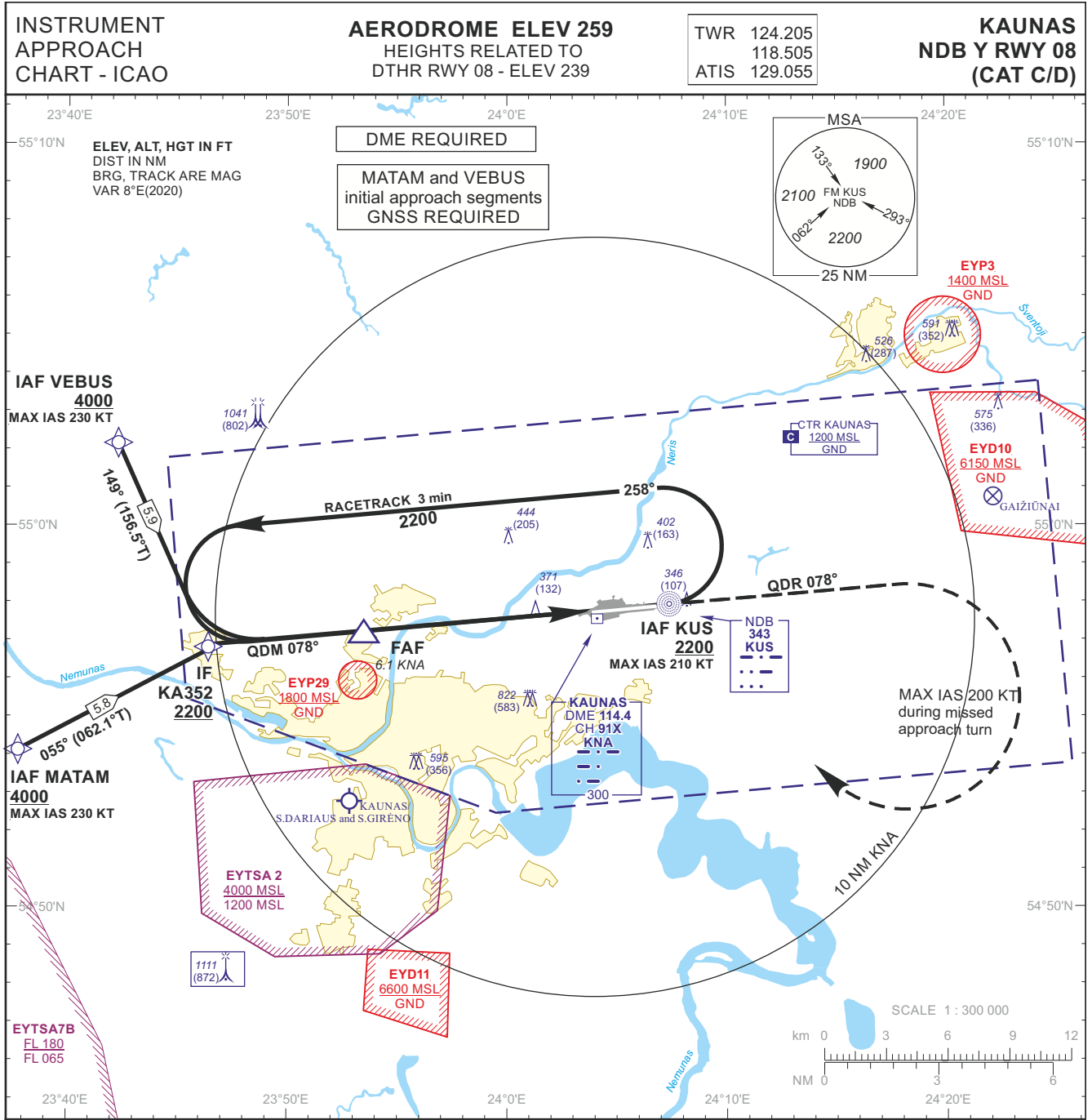
**IAF VEBUS, INITIAL APPROACH**

Serial Number	Path Descriptor	Waypoint Identifier	Fly-over	Course/Track °M(°T)	Magnetic Variation	Distance (NM)/ Time	Turn Direction	Altitude (FT)/ Flight level	Speed (KT)	VPA/TCH	Navigation Specification
001	IF	VEBUS	—	—	-7.5	—	—	+4000	—	—	RNAV 1
002	TF	KA352	—	149(156.5)	-7.5	5.9	—	+2200	—	—	RNAV 1

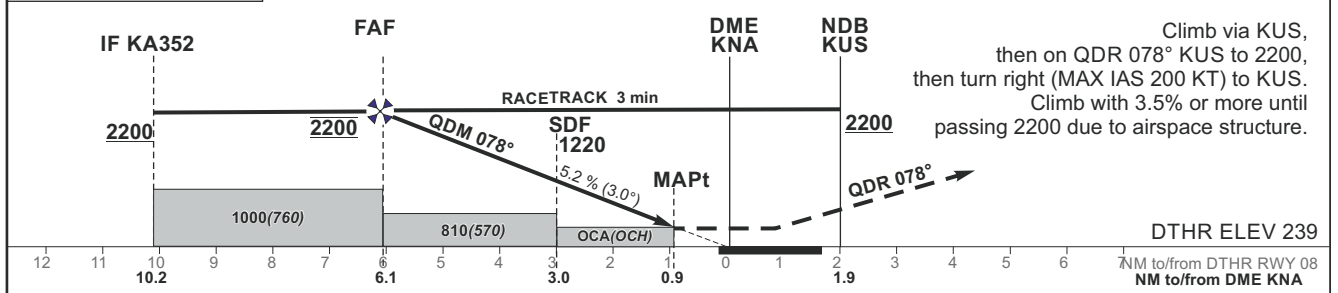
**NDB INSTRUMENT APPROACH from IAFs(KUS, MATAM, VEBUS)**

FIX/POINTS	COORDINATES	FIX FORMATION
MATAM (IAF)	54 54 08.9N 023 37 22.7E	BRG 070.25° KUS / 15.74 NM KNA
VEBUS (IAF)	55 02 19.2N 023 42 11.7E	BRG 099.50° KUS / 13.40 NM KNA
KUS (IAF)	54 57 56.6N 024 07 18.7E	1.94 NM KNA
KA352 (IF)	54 56 52.8N 023 46 18.3E	BRG 077.59° KUS / 10.22 NM KNA
FAF	54 57 14.9N 023 53 23.4E	BRG 077.61° KUS / 6.12 NM KNA
SDF	54 57 31.4N 023 58 48.3E	BRG 077.61° KUS / 3.00 NM KNA
MAPt	54 57 42.3N 024 02 28.0E	BRG 077.61° KUS / 0.88NM KNA
DTHR RWY 08	54 57 46.44N 024 03 50.94E	
KNA	54 57 37.4N 024 03 59.1E	

Final approach descent angle: 3.00°



TRANSITION ALT 5000 MISSED APPROACH



OCA(OCH)		C	D	DIST DME KNA								
STRAIGHT-IN APPROACH	NDB	630 (390)		5	4	3	2					
	NDB (when SDF not received)	810 (570)		1850	1530	1220	900					
CIRCLING		1230 (970)	not authorized	Timing not authorized for defining the MAPt								
				GS	Kts	80	100	120	140	160	180	
				FAF-MAPt	5.2 NM	min:sec	3:54	3:07	2:36	2:14	1:57	1:44
				Rate of descent (5.2%)	ft/min	415	520	625	730	835	940	
For data tabulation see verso												

INSTRUMENT  
APPROACH  
CHART - ICAO

**AERODROME ELEV 259**  
HEIGHTS RELATED TO  
DTHR RWY 08 - ELEV 239

TWR	124.205
	118.505
ATIS	129.055

**KAUNAS**  
**NDB Y RWY 08**  
**(CAT C/D)**

TABULAR DESCRIPTION

**IAF MATAM, INITIAL APPROACH**

Serial Number	Path Descriptor	Waypoint Identifier	Fly-over	Course/Track °M(°T)	Magnetic Variation	Distance (NM)/ Time	Turn Direction	Altitude (FT)/ Flight level	Speed (KT)	VPA/TCH	Navigation Specification
001	IF	MATAM	—	—	-7.5	—	—	+4000	-230	—	RNAV 1
002	TF	KA352	—	055(062.1)	-7.5	5.8	—	+2200	—	—	RNAV 1

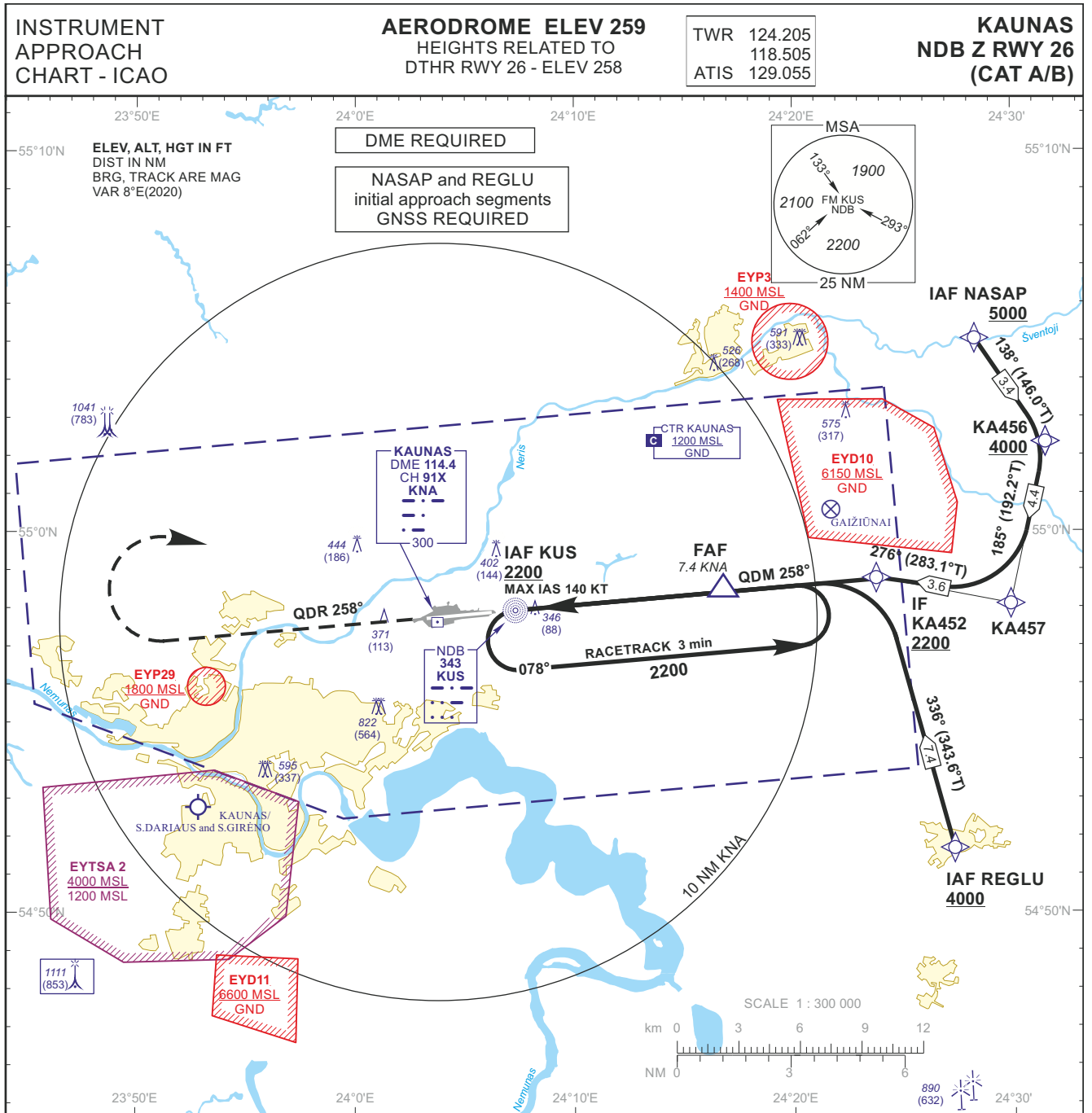
**IAF VEBUS, INITIAL APPROACH**

Serial Number	Path Descriptor	Waypoint Identifier	Fly-over	Course/Track °M(°T)	Magnetic Variation	Distance (NM)/ Time	Turn Direction	Altitude (FT)/ Flight level	Speed (KT)	VPA/TCH	Navigation Specification
001	IF	VEBUS	—	—	-7.5	—	—	+4000	-230	—	RNAV 1
002	TF	KA352	—	149(156.5)	-7.5	5.9	—	+2200	—	—	RNAV 1

**NDB INSTRUMENT APPROACH from IAFs(KUS, MATAM, VEBUS)**

FIX/POINTS	COORDINATES	FIX FORMATION
MATAM (IAF)	54 54 08.9N 023 37 22.7E	BRG 070.25° KUS / 15.74 NM KNA
VEBUS (IAF)	55 02 19.2N 023 42 11.7E	BRG 099.50° KUS / 13.40 NM KNA
KUS (IAF)	54 57 56.6N 024 07 18.7E	1.94 NM KNA
KA352 (IF)	54 56 52.8N 023 46 18.3E	BRG 077.59° KUS / 10.22 NM KNA
FAF	54 57 14.9N 023 53 23.4E	BRG 077.61° KUS / 6.12 NM KNA
SDF	54 57 31.4N 023 58 48.3E	BRG 077.61° KUS / 3.00 NM KNA
MAPt	54 57 42.3N 024 02 28.0E	BRG 077.61° KUS / 0.88NM KNA
DTHR RWY 08	54 57 46.44N 024 03 50.94E	
KNA	54 57 37.4N 024 03 59.1E	

Final approach descent angle: 3.00°



**MISSED APPROACH**

Climb on QDR 258° KUS to 2200, then turn right to KUS.  
Climb with 3.5% or more until passing 2200 due to airspace structure.

TRANSITION ALT 5000

	DME KNA	NDB KUS	FAF	IF KA452
		2200	2200	2200
		SDF 1140		
		MAPt		
		5.2% (3.0°)		
		OCA(OCH)	660(400)	680(420)
DTHR ELEV 258				
NM to/from DTHR RWY 26	7	6	5	4
NM to/from DME KNA	6	5	4	3

OCA(OCH)		A		B		DIST DME KNA						
		7	6	5	4	3	2	1	0			
STRAIGHT-IN APPROACH	NDB	630 (370)										
	NDB (when SDF not received)	660 (400)										
CIRCLING		710 (450)		760 (500)								
Timing not authorized for defining the MAPt												
GS	Kts	80	100	120	140	160	180					
FAF-MAPt	5.4 NM	min:sec	4:03	3:14	2:42	2:19	2:02	1:48				
Rate of descent (5.2%)	ft/min	415	520	625	730	835	940					

For data tabulation see verso

INSTRUMENT  
APPROACH  
CHART - ICAO

**AERODROME ELEV 259**  
HEIGHTS RELATED TO  
DTHR RWY 26 - ELEV 258

TWR	124.205
	118.505
ATIS	129.055

**KAUNAS**  
**NDB Z RWY 26**  
**(CAT A/B)**

TABULAR DESCRIPTION

**IAF NASAP, INITIAL APPROACH**

Serial Number	Path Descriptor	Waypoint Identifier	Fly-over	Course/Track °M(°T)	Magnetic Variation	Distance (NM)/ Time	Turn Direction	Altitude (FT)/ Flight level	Speed (KT)	VPA/TCH	Navigation Specification
001	IF	NASAP	—	—	-7.5	—	—	+5000	—	—	RNAV 1
002	TF	KA456	—	138(146.0)	-7.5	3.4	—	+4000	—	—	RNAV 1
003	TF	KA457	—	185(192.2)	-7.5	4.4	—	—	—	—	RNAV 1
004	TF	KA452	—	276(283.1)	-7.5	3.6	—	+2200	—	—	RNAV 1

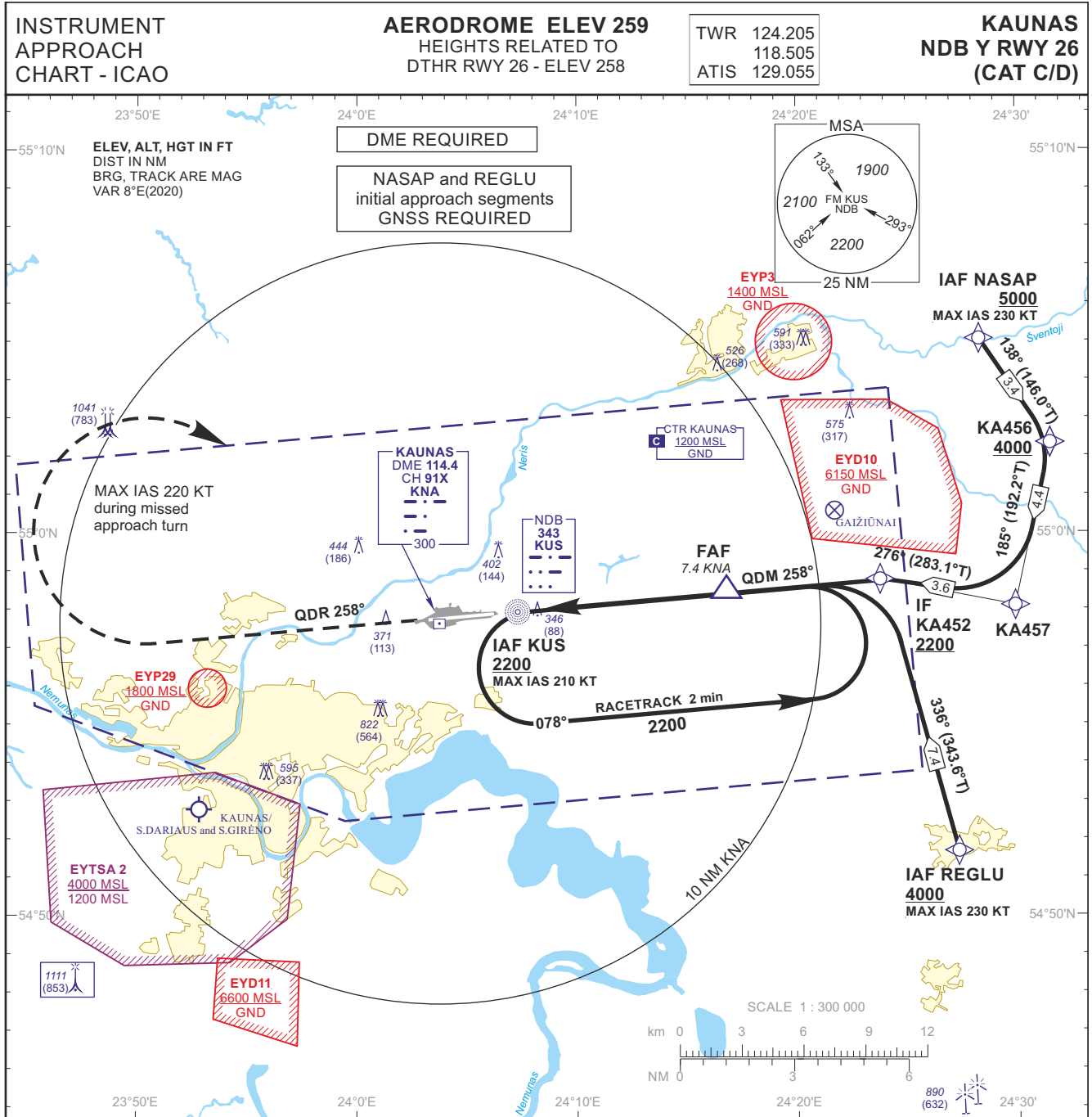
**IAF REGLU, INITIAL APPROACH**

Serial Number	Path Descriptor	Waypoint Identifier	Fly-over	Course/Track °M(°T)	Magnetic Variation	Distance (NM)/ Time	Turn Direction	Altitude (FT)/ Flight level	Speed (KT)	VPA/TCH	Navigation Specification
001	IF	REGLU	—	—	-7.5	—	—	+4000	—	—	RNAV 1
002	TF	KA452	—	336(343.6)	-7.5	7.4	—	+2200	—	—	RNAV 1

**NDB INSTRUMENT APPROACH from IAFs(KUS, NASAP, REGLU)**

FIX/POINTS	COORDINATES	FIX FORMATION
NASAP (IAF)	55 04 57.2N 024 28 10.6E	BRG 232.01° KUS / 15.74 NM KNA
REGLU (IAF)	54 51 37.2N 024 27 23.7E	BRG 290.99° KUS / 14.79 NM KNA
KA456	55 02 09.7N 024 31 27.3E	BRG 245.40° KUS / 16.46 NM KNA
KA457	54 57 55.1N 024 29 51.4E	BRG 262.43° KUS / 14.92 NM KNA
KA452 (IF)	54 58 44.2N 024 23 46.4E	1BRG 257.57° KUS / 11.46 NM KNA
FAF	54 58 24.1N 024 16 41.1E	BRG 257.56° KUS / 7.36 NM KNA
SDF	54 58 07.2N 024 10 53.0E	BRG 257.56° KUS / 4.00 NM KNA
NDB KUS (IAF, MAPt)	54 57 56.6N 024 07 18.7E	1.94 NM KNA
KNA	54 57 37.4N 024 03 59.1E	
DTHR RWY 26	54 57 53.79N 024 06 19.46E	
Final approach descent angle: 3.00°		





**MISSED APPROACH**

Climb on QDR 258° KUS to 2200, then turn right (MAX IAS 220 KT) to KUS. Climb with 3.5% or more until passing 2200 due to airspace structure.

**TRANSITION ALT 5000**

DTHR ELEV 258

	DME KNA	NDB KUS	FAF	IF KA452	
		2200	2200	2200	
		SDF 1140			
		MAPt			
		5.2% (3.0°)			
		OCA(OCH)			
		660(400)		680(420)	
NM to/from DTHR RWY 26	7	6	5	4	3
NM to/from DME KNA	0	1.9	4.0	7.4	11.5

<b>OCA(OCH)</b>		<b>C</b>	<b>D</b>	DIST DME KNA								
STRAIGHT-IN APPROACH	NDB			7	6	5	4	3				
	NDB (when SDF not received)	630 (370)			Altitude	2090	1770	1460	1140	830		
CIRCLING		660 (400)			Height	(1832)	(1512)	(1202)	(882)	(572)		
		1230 (970)	not authorized	Timing not authorized for defining the MAPt								
				GS	Kts	80	100	120	140	160	180	
				FAF-MAPt	5.4 NM	min:sec	4:03	3:14	2:42	2:19	2:02	1:48
				Rate of descent (5.2%)	ft/min	415	520	625	730	835	940	

For data tabulation see verso

**INSTRUMENT  
APPROACH  
CHART - ICAO**

**AERODROME ELEV 259**  
HEIGHTS RELATED TO  
DTHR RWY 26 - ELEV 258

TWR	124.205
	118.505
ATIS	129.055

**KAUNAS  
NDB Y RWY 26  
(CAT C/D)**

**TABULAR DESCRIPTION**

**IAF NASAP, INITIAL APPROACH**

Serial Number	Path Descriptor	Waypoint Identifier	Fly-over	Course/Track °M(°T)	Magnetic Variation	Distance (NM)/ Time	Turn Direction	Altitude (FT)/ Flight level	Speed (KT)	VPA/TCH	Navigation Specification
001	IF	NASAP	—	—	-7.5	—	—	+5000	-230	—	RNAV 1
002	TF	KA456	—	138(146.0)	-7.5	3.4	—	+4000	—	—	RNAV 1
003	TF	KA457	—	185(192.2)	-7.5	4.4	—	—	—	—	RNAV 1
004	TF	KA452	—	276(283.1)	-7.5	3.6	—	+2200	—	—	RNAV 1

**IAF REGLU, INITIAL APPROACH**

Serial Number	Path Descriptor	Waypoint Identifier	Fly-over	Course/Track °M(°T)	Magnetic Variation	Distance (NM)/ Time	Turn Direction	Altitude (FT)/ Flight level	Speed (KT)	VPA/TCH	Navigation Specification
001	IF	REGLU	—	—	-7.5	—	—	+4000	-230	—	RNAV 1
002	TF	KA452	—	336(343.6)	-7.5	7.4	—	+2200	—	—	RNAV 1

**NDB INSTRUMENT APPROACH from IAFs(KUS, NASAP, REGLU)**

FIX/POINTS	COORDINATES	FIX FORMATION
NASAP (IAF)	55 04 57.2N 024 28 10.6E	BRG 232.01° KUS / 15.74 NM KNA
REGLU (IAF)	54 51 37.2N 024 27 23.7E	BRG 290.99° KUS / 14.79 NM KNA
KA456	55 02 09.7N 024 31 27.3E	BRG 245.40° KUS / 16.46 NM KNA
KA457	54 57 55.1N 024 29 51.4E	BRG 262.43° KUS / 14.92 NM KNA
KA452 (IF)	54 58 44.2N 024 23 46.4E	1BRG 257.57° KUS / 11.46 NM KNA
FAF	54 58 24.1N 024 16 41.1E	BRG 257.56° KUS / 7.36 NM KNA
SDF	54 58 07.2N 024 10 53.0E	BRG 257.56° KUS / 4.00 NM KNA
NDB KUS (IAF, MAPt)	54 57 56.6N 024 07 18.7E	1.94 NM KNA
KNA	54 57 37.4N 024 03 59.1E	
DTHR RWY 26	54 57 53.79N 024 06 19.46E	
Final approach descent angle: 3.00°		