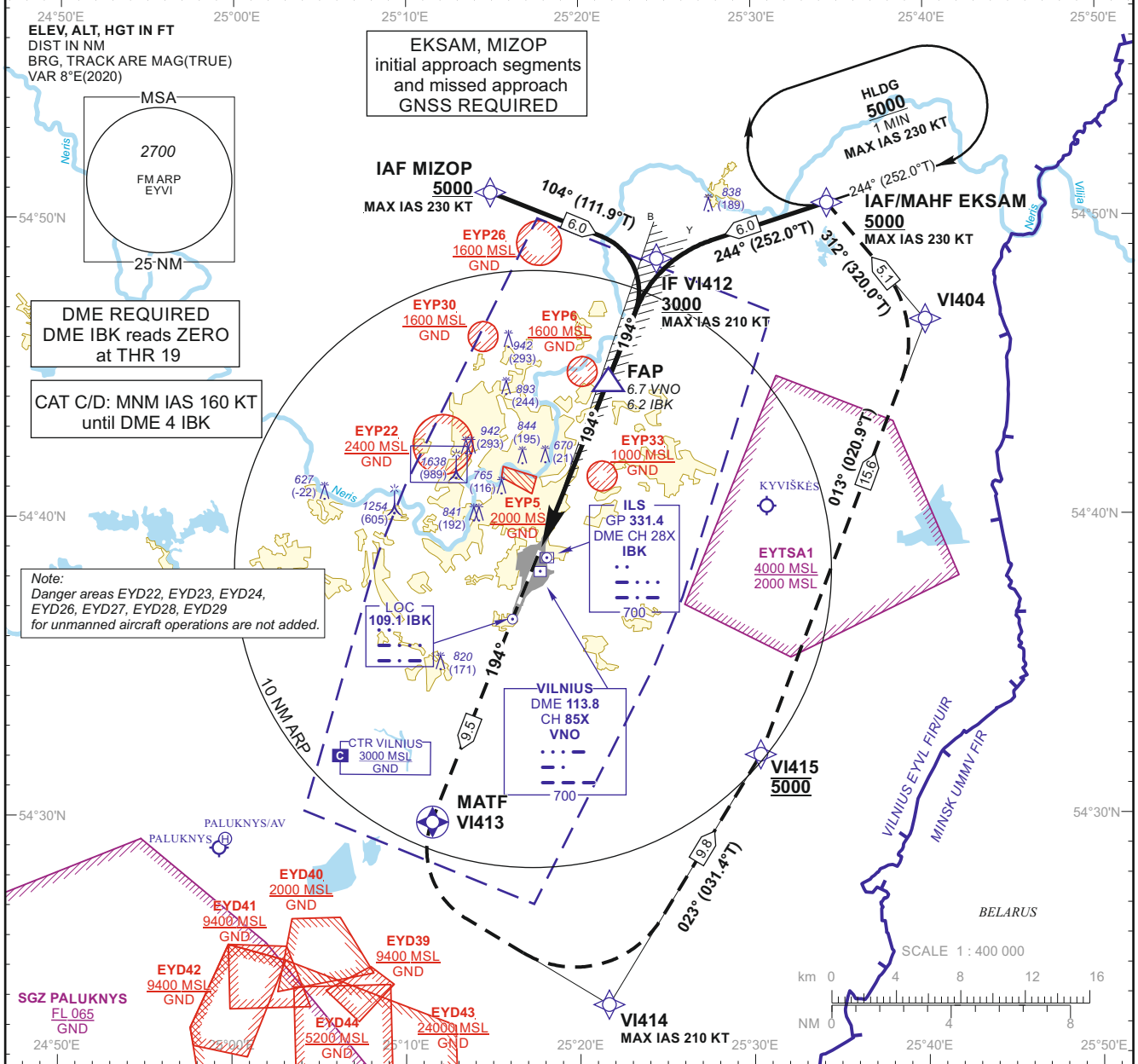


INSTRUMENT APPROACH CHART - ICAO

AERODROME ELEV 649
 HEIGHTS RELATED TO THR RWY 19 - ELEV 649

APP 120.705
 TWR 118.205
 ATIS 125.805

VILNIUS (EYVI)
ILS Z RWY 19
(CAT A/B/C/D)

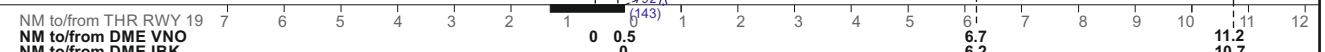


MISSED APPROACH

Climb on course 194° to VI413, then turn left, direct to VI414[K210-], then on track 023° to VI415[A5000], then on track 013° to VI404, then on track 312° to EKSAM[A5000+;K230-].

ILS RDH 51

THR ELEV 649



NM to/from THR RWY 19		7	6	5	4	3	2	1	0	0.5	1	2	3	4	5	6	7	8	9	10	11	12	
NM to/from DME VNO																6.7					11.2		
NM to/from DME IBK																6.2					10.7		
OCA(OCH)		A	B	C	D	DIST DME IBK	6	5	4	3	2												
STRAIGHT-IN APPROACH	ILS CAT I	903 (254)	915 (266)	923 (274)	933 (284)	Altitude	2600	2280	1960	1650	1330												
						Height	(1951)	(1631)	(1311)	(1001)	(681)												
CIRCLING		NOT AUTHORIZED																					
		GS		Kts		80	100	120	140	160	180												
		FAP - THR 6.2 NM		min:sec		4:39	3:43	3:06	2:39	2:20	2:04												
		Rate of descent (5.2%)		ft/min		415	520	625	730	835	940												

For data tabulation see verso

Changes: obstacles; scale; coordinates and ALT of VI413 and VI415; VI414 added; VI404 instead of VI407; missed approach; note; upper and lateral limits of EYD39 and CTR; EYD41 - EYD44 added; IAF MIZOP withdrawn; IAF MIZOP added; lower limit of EYTSA1.

INSTRUMENT
APPROACH
CHART - ICAO

AERODROME ELEV 649
HEIGHTS RELATED TO
THR RWY 19 - ELEV 649

VILNIUS (EYVI)
ILS Z RWY 19
(CAT A/B/C/D)

TABULAR DESCRIPTION

Serial Number	Path Descriptor	Waypoint Identifier	Fly-over	Course/Track °M(°T)	Magnetic Variation	Distance (NM)/ Time	Turn Direction	Altitude (FT)/ Flight level	Speed (KT)	VPA/TCH	Navigation Specification
IAF EKSAM, INITIAL APPROACH											
001	IF	EKSAM	—	—	8.3	—	—	+5000	-230	—	RNAV 1
002	TF	VI412	—	244(252.0)	8.3	6.0	—	+3000	-210	—	RNAV 1
IAF MIZOP, INITIAL APPROACH											
001	IF	MIZOP	—	—	8.3	—	—	+5000	-230	—	RNAV 1
002	TF	VI412	—	104(111.9)	8.3	6.0	—	+3000	210	—	RNAV 1
MISSED APPROACH											
001	—	RW19	—	—	8.3	—	—	—	—	—	RNAV 1
002	CF	VI413	Y	194(201.8)	8.3	9.50	—	—	—	—	RNAV 1
003	DF	VI414	—	—	8.3	—	L	—	-210	—	RNAV 1
004	TF	VI415	—	023(031.5)	8.3	9.8	—	@5000	—	—	RNAV 1
005	TF	VI404	—	011(021.1)	8.3	15.6	—	—	—	—	RNAV 1
006	TF	EKSAM	—	312(320.0)	8.3	5.1	—	+5000	-230	—	RNAV 1
007	HM	EKSAM	—	244(252.0)	8.3	1 min	R	+5000	-230	—	RNAV 1

FIX/POINTS	COORDINATES	FIX FORMATION
VNO	54 38 09.8N 025 17 37.1E	
EKSAM (IAF/MAHF)	54 50 28.1N 025 34 22.5E	
MIZOP (IAF)	54 50 51.1N 025 14 52.6E	
VI412 (IF)	54 48 37.4N 025 24 30.6E	11.22 NM VNO ; BRG 193.64° / 10.74 NM IBK
FAP	54 44 24.0N 025 21 33.6E	6.65 NM VNO ; BRG 193.64° / 6.18 NM IBK
RW19	54 38 40.73N 025 17 34.99E	
VI413 (MATF)	54 29 52.5N 025 11 30.2E	
VI414	54 23 40.3N 025 21 37.7E	
VI415	54 32 01.1N 025 30 23.8E	
VI404	54 46 34.0N 025 40 02.2E	
LOC IBK	54 36 59.4N 025 16 24.8E	
DME IBK	54 38 29.0N 025 17 34.2E	

Changes: coordinates of VI413 and VI415; VI404 instead VI407; VI414 added; missed approach procedures coding; REP's GEKBI, ETIKU and KOTOV withdrawn; REP MIZOP added.